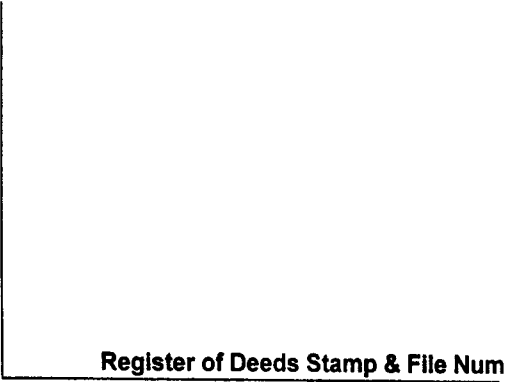


LAND CORNER RECORDATION CERTIFICATE
Filing Requirement of Act 74, Mich. P.A. 1970

For corners in

Emmet <small>(County)</small>	Located In:	Corner Code #
1. Public Land Survey	T 37N R 4W	B-5
	T 37N R 4W	B-6
2. Property Controlling in Section	S T R	_____
	S T R	_____
3. Miscellaneous Property in Sec.	S T R	_____
	S T R	_____

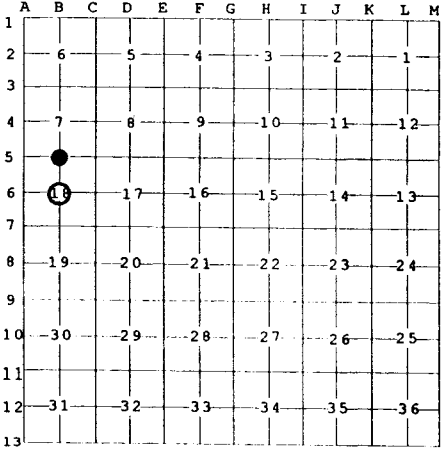


Register of Deeds Stamp & File Num

4. Lot No. _____, Recorded Plat _____

5. Private Claims _____

I, Carl T. Kiiskila, in a field survey on Mar. 24, 19 99 do hereby state that under requirements of P.A. 74, Michigan P.A. of 1970, the corner points mentioned in lines 1 and 2 above were in conformance with regulations and rules therefore as required in the current manual of survey instructions of the United States Department of the Interior, Bureau of Land Management or by a decree of a Court of Law and /or that the corner points mentioned in lines 3, 4 and 5 above were in conformance with the rules of the Michigan Board of Land Surveyors or by a Decree of a Court of Law; established, re-established, monumented, recovered, found as expressed below:



NOTE: Not more than 2 corners, all in the same town and range, may be recorded on this certificate.

A. Description of original monument and accessories and/or subsequent restoration:

- | | |
|---|--|
| <p>B-5 GLO - John Mullett, D.S. - Dec. 1840.
Set quarter section post.
Wit: Sugar 14" N 22° E 19 links
Sugar 13" S 7° W 8 links</p> | <p>B-6 This corner position was not established during the original government survey.</p> |
|---|--|

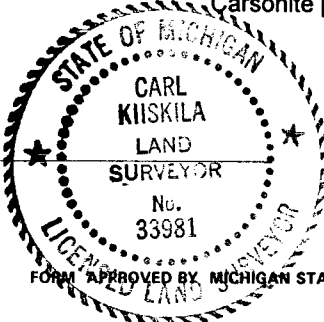
B. Description of corner evidence found and/or method applied in restoring or reestablishing corner:

- | | |
|---|--|
| <p>B-5 Set a standard DNR monument in old east-west road bed, 33' south of an east-west right-of-way fence on a good north-south fence.</p> | <p>B-6 Established the center of Section 18 at the intersection of the north-south and east-west quarter lines as per standard B.L.M. instructions for the subdivision of a section.</p> |
|---|--|

C. Description of monument for corner and accessories established to perpetuate locating the position of the corner:

- | | |
|---|---|
| <p>B-5 Set standard DNR monument and carsonite marker post.
Wit: Set nail in 10" Yellow Birch N 15° W 10.84'
Set nail in 5" & 7" twin Maple N 40° W 30.09'
Set nail in 10" Maple S 76° W 37.44'
Set nail in 8" Maple S 39° W 42.99'
Carsonite post North 1'</p> | <p>B-6 Set 5/8" x 32" rerod with PS cap and carsonite marker post.
Wit: Set nail in 14" Ash N 71° W 4.21'
Set nail in 3" Maple S 8° W 18.94'
Set nail in 14" Beech S 43° E 23.47'
Set nail in 17" Beech N 28° E 25.41'
Fence corner wire north-south
and east-west S 77° E 37' ±
East-west fence South 6' ±
Carsonite post North 1'</p> |
|---|---|

Signed by Carl T. Kiiskila
 Surveyor's Michigan License No. 33981



Date 7-26-99