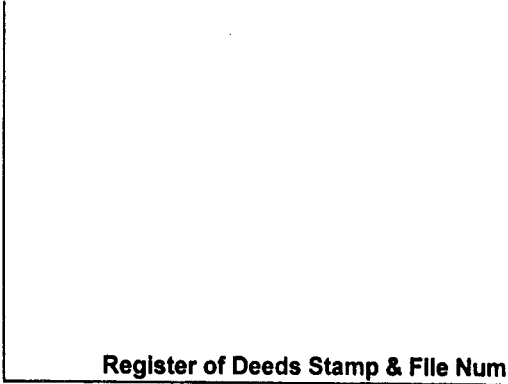


LAND CORNER RECORDATION CERTIFICATE
Filing Requirement of Act 74, Mich. P.A. 1970

For corners in

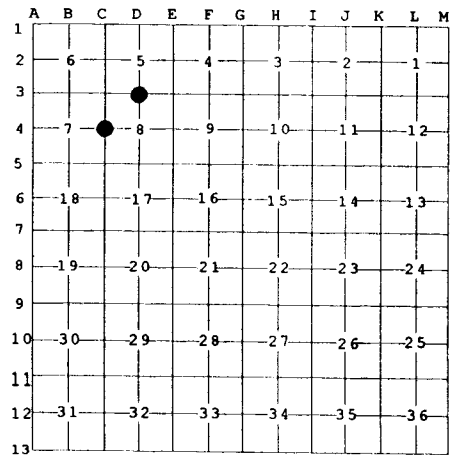
<u>Emmet</u> (County)	Located In:	Corner Code #
1. Public Land Survey	<u>T 37N R 4W</u>	<u>C-4</u>
	<u>T 37N R 4W</u>	<u>D-3</u>
2. Property Controlling in Section	S <u> </u> T <u> </u> R <u> </u>	<u> </u>
	S <u> </u> T <u> </u> R <u> </u>	<u> </u>
3. Miscellaneous Property in Sec.	S <u> </u> T <u> </u> R <u> </u>	<u> </u>
	S <u> </u> T <u> </u> R <u> </u>	<u> </u>



4. Lot No. _____, Recorded Plat _____

5. Private Claims _____

I, Carl T. Kiiskila, in a field survey on Apr. 19, 19 99 do hereby state that under requirements of P.A. 74, Michigan P.A. of 1970, the corner points mentioned in lines 1 and 2 above were in conformance with regulations and rules therefore as required in the current manual of survey instructions of the United States Department of the Interior, Bureau of Land Management or by a decree of a Court of Law and /or that the corner points mentioned in lines 3, 4 and 5 above were in conformance with the rules of the Michigan Board of Land Surveyors or by a Decree of a Court of Law; established, re-established, monumented, recovered, found as expressed below:



NOTE: Not more than 2 corners, all in the same town and range, may be recorded on this certificate.

A. Description of original monument and accessories and/or subsequent restoration:

C-4 GLO - John Mullett, D.S. - 1840.
 Sugar 15" quarter section corner.
 No witnesses recorded.

D-3 GLO - John Mullett, D.S. - 1840.
 Hemlock 18" quarter section corner.
 No witnesses recorded.

B. Description of corner evidence found and/or method applied in restoring or reestablishing corner:

C-4 Reestablished the West quarter corner of Section 8 by single proportionate measurement midway and online between a found corner one half mile south and a reestablished corner one half mile to the north.

D-3 Found and accepted a 1/2" rerod set by Thomas D. Swenor, PS #37282 at the intersection of an east-west fence line and a fence line north.

C. Description of monument for corner and accessories established to perpetuate locating the position of the corner:

C-4 Set standard DNR monument.
 Wit: Set nail in 14" Maple N 81° W 12.22'
 Set nail in 13" Maple N 7° W 35.59'
 Set nail in 15" Beech S 60° E 29.15'
 Set nail in 7" Maple S 8° E 16.44'
 Centerline of two track trail road West 50'

D-3 Set standard DNR monument.
 Wit: Set nail in 3" Spruce East 4.27'
 Set nail in 2" Spruce S 24° W 37.27'
 Set nail in 6" White Birch S 88° W 24.22'
 Set nail in 4" Spruce N 21° W 10.06'
 Centerline of two track trail road South 6'

Signed by Carl T. Kiiskila

Surveyor's Michigan License No. 33981



Date 7-21-99