

LAND CORNER RECORDATION CERTIFICATE
Filing Requirement of Act 74, Mich. P.A. 1970

For corners in

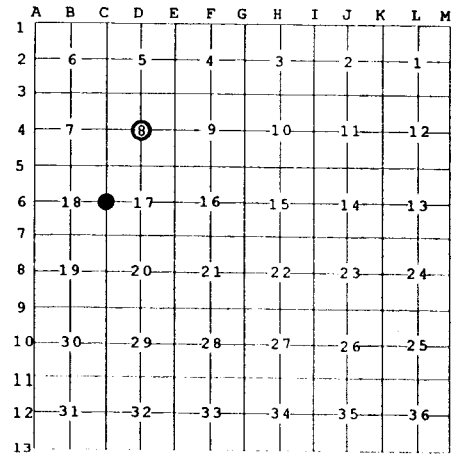
<u>Emmet</u> (County)	Located In:	Corner Code #
1. Public Land Survey	T <u>37N</u> R <u>4W</u>	<u>C-6</u>
	T <u>37N</u> R <u>4W</u>	<u>D-4</u>
2. Property Controlling in Section	S <u> </u> T <u> </u> R <u> </u>	<u> </u>
	S <u> </u> T <u> </u> R <u> </u>	<u> </u>
3. Miscellaneous Property in Sec.	S <u> </u> T <u> </u> R <u> </u>	<u> </u>
	S <u> </u> T <u> </u> R <u> </u>	<u> </u>

Register of Deeds Stamp & File Num

4. Lot No. _____, Recorded Plat _____

5. Private Claims _____

I, Carl T. Kiiskila, in a field survey on Apr. 14, 19 99 do hereby state that under requirements of P.A. 74, Michigan P.A. of 1970, the corner points mentioned in lines 1 and 2 above were in conformance with regulations and rules therefore as required in the current manual of survey instructions of the United States Department of the Interior, Bureau of Land Management or by a decree of a Court of Law and /or that the corner points mentioned in lines 3, 4 and 5 above were in conformance with the rules of the Michigan Board of Land Surveyors or by a Decree of a Court of Law; established, re-established, monumented, recovered, found as expressed below:



NOTE: Not more than 2 corners, all in the same town and range, may be recorded on this certificate.

A. Description of original monument and accessories and/or subsequent restoration:

- | | | | |
|-----|---|-----|---|
| C-6 | GLO - John Mullett, D.S. - 1840.
Set quarter section post.
Wit: Beech 6" S 80° E 6 links
Beech 6" N 81° W 22 links | D-4 | This corner position was not established during the original government survey. |
|-----|---|-----|---|

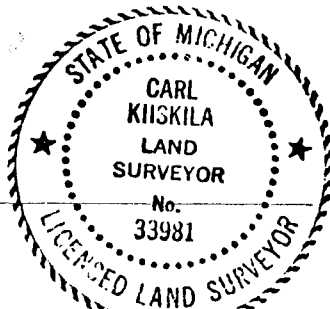
B. Description of corner evidence found and/or method applied in restoring or reestablishing corner:

- | | | | |
|-----|---|-----|---|
| C-6 | Reestablished the West quarter corner of Section 17 by single proportionate measurement midway and online between found corners one half mile to the north and south. | D-4 | Set the center of Section 8 at the intersection of the east-west quarter line and the north-south quarter line. |
|-----|---|-----|---|

C. Description of monument for corner and accessories established to perpetuate locating the position of the corner:

- | | | | |
|-----|---|-----|--|
| C-6 | Set standard DNR monument.
Wit: Set nail in 10" & 12" twin Maple S 61° W 17.11'
Set nail in 12" Maple N 26° W 41.20'
Set nail in 6" & 9" twin Maple N 42° E 36.74'
Set nail in 12" Maple S 80° E 1.75'
4-1/2" steel pipe gate post S 12° E 12.98'
Center of north-south trail road West 7'
Carsonite post North 1' | D-4 | Set 5/8" x 32" rered with PS cap and carsonite marker post.
Wit: Set nail in 8" Maple N 67° E 21.37'
Set nail in 8" Maple North 22.94'
Set nail in 10" Maple N 54° W 21.20'
Set nail in 7" Maple S 42° W 14.16'
Carsonite post North 1' |
|-----|---|-----|--|

Signed by Carl T. Kiiskila



Date 7-21-99

Surveyor's Michigan License No. 33981