

MICHIGAN
DEPARTMENT OF CONSERVATION
FORESTRY DIVISION

LAND CORNER RECORD

T. 37 N.R. 5 W

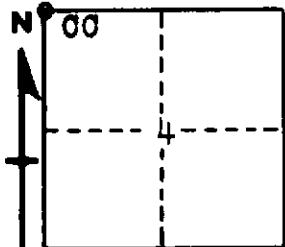
Emmet COUNTY

DESCRIPTION OF CORNER Closing Corner common to Sections 4 and 5 on north
boundary of township

CORNER MONUMENT Drove 3/8" bolt in blacktop

DATE MONUMENT PLACED AND WITNESSED April 28, 1961

WITNESSES TO CORNER.....



5" Cedar - S24E - 27.1 feet

8" Cedar - S52W - 35.4 feet

AND

CIRCLE CORNER REGISTERED

DESCRIPTION IN DETAIL AS TO HOW CORNER WAS LOCATED AND IDENTIFIED OR RESTORED.

This corner was established at record measurement east of standard corner to Sections 32-33, T38N, R5W. Could find no previous corner but checks very closely with old fence line south.

Corner to Sections 32-33, T38N, R5W is 8 links west.

SURVEYOR'S SEAL

SIGNED Kenneth J. Oetting DATE 5/24/61
REGISTERED LAND SURVEYOR