

MICHIGAN
DEPARTMENT OF CONSERVATION
FORESTRY DIVISION

LAND CORNER RECORD

T. 37&38 N.R. 5&6 W

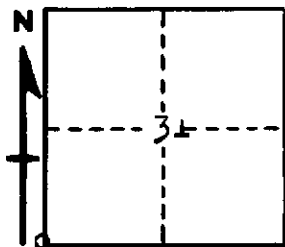
Emmet COUNTY

DESCRIPTION OF CORNER Section corner common to Sections 1-6-31-36

CORNER MONUMENT Drove 1/2" iron bar through Blacktop

DATE MONUMENT PLACED AND WITNESSED April 28, 1961

WITNESSES TO CORNER.....



12" H. Maple - S53E - 51 links

8" H. Maple - S28W - 63 links

AND

CIRCLE CORNER REGISTERED

DESCRIPTION IN DETAIL AS TO HOW CORNER WAS LOCATED AND IDENTIFIED OR RESTORED.

This corner was established at a point center line intersection of roads east, west and south and in line with fence north. Unable to locate previous corner, but this point checks for distance E-W-N. Appears to have been accepted as corner and was considered best available evidence.

SURVEYOR'S SEAL

SIGNED

Kenneth J. Oetting
REGISTERED LAND SURVEYOR

DATE 5/24/61