

MICHIGAN
DEPARTMENT OF CONSERVATION
FORESTRY DIVISION

LAND CORNER RECORD

T. 38 N.R. 4 W.
T. 39 N.R. 4 W.

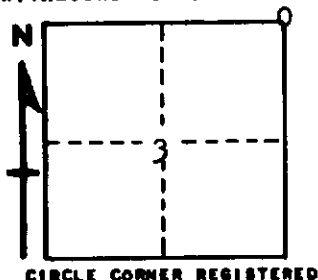
Emmet COUNTY

DESCRIPTION OF CORNER Section corner common to Sections 2-3-34-35

CORNER MONUMENT Left 1" pipe in place

DATE MONUMENT PLACED AND WITNESSED April 19, 1962

WITNESSES TO CORNER.....



5" Twin Cedar S 65 E - 97.9'

8" W. Birch S 23 W - 82.1'

AND 16" Cedar stump N 5 E - 42.8'

DESCRIPTION IN DETAIL AS TO HOW CORNER WAS LOCATED AND IDENTIFIED OR RESTORED.

This corner was found while making a survey in this area. Found 1" pipe at road intersection E - W - S and in line with fence north. Checks measurement to section corner south. Appears acceptable as section corner.

SURVEYOR'S SEAL

SIGNED *Kenneth A. Ostberg* DATE April 24, 1962
REGISTERED LAND SURVEYOR