

MICHIGAN
DEPARTMENT OF CONSERVATION
FORESTRY DIVISION

LAND CORNER RECORD

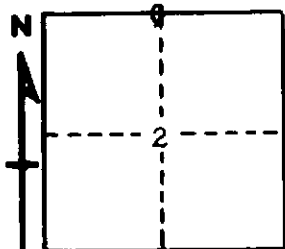
T. 38 N. R. 4 W.
T. 39 N. R. 4 W. Emmet COUNTY

DESCRIPTION OF CORNER 1/4 corner common to Sections 2 - 35

CORNER MONUMENT Set 1" pipe with 4" brass cap below surface

DATE MONUMENT PLACED AND WITNESSED June 11, 1962

WITNESSES TO CORNER.....



CIRCLE CORNER REGISTERED

12" W. Pine stump N 10 E 47.0'

8" W. Birch N 65 E 34.9'

AND

DESCRIPTION IN DETAIL AS TO HOW CORNER WAS LOCATED AND IDENTIFIED OR RESTORED.

This corner was established while making a survey in this area. Set this corner in line with old fence running north and south, and midway between old east-west fence lines for latitude. Unable to locate anything for a previous corner. This point checks acceptably for measurement to existing section corner 1/2 mile west, and is considered the best available evidence of the proper position for this corner.

SURVEYOR'S SEAL

SIGNED *Kenneth G. Wetling* DATE June 14, 1962
REGISTERED LAND SURVEYOR