

MICHIGAN
DEPARTMENT OF CONSERVATION
FORESTRY DIVISION

LAND CORNER RECORD

T. 38 N.R. 4 W.
T. 39 N.R. 4 W.

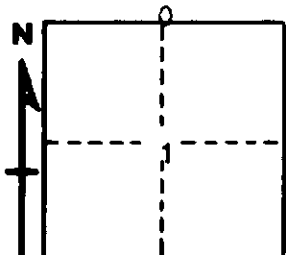
Emmet COUNTY

DESCRIPTION OF CORNER 1/4 corner common to Sections 1-36

CORNER MONUMENT Drove 1" x 24" pipe below surface

DATE MONUMENT PLACED AND WITNESSED June 11, 1962

WITNESSES TO CORNER.....



CIRCLE CORNER REGISTERED

8" Aspen S 55 E 121.0'
5" Aspen South 96.6'
AND
Center M-131 West 85.2'

DESCRIPTION IN DETAIL AS TO HOW CORNER WAS LOCATED AND IDENTIFIED OR RESTORED.

This corner was established by proportionate measurement, midpoint on line, between section corners. The measurement of this mile while considerably short of record measure, is supported by a similar shortage between existing corners on the south boundary of Section 1. Falls near center of E - W township road, in new fill section created by approach to relocated US-131.

SURVEYOR'S SEAL

SIGNED Kenneth Wetling DATE June 14, 1962
REGISTERED LAND SURVEYOR