

MICHIGAN
DEPARTMENT OF CONSERVATION
FORESTRY DIVISION

LAND CORNER RECORD

T. 38 N.R. 4 W.

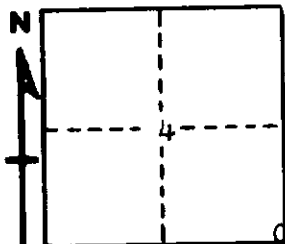
Emmet COUNTY

DESCRIPTION OF CORNER Section corner common to Sections 3 - 4 - 9 - 10

CORNER MONUMENT Set 1" pipe with 4" brass cap

DATE MONUMENT PLACED AND WITNESSED June 11, 1962

WITNESSES TO CORNER.....



CIRCLE CORNER REGISTERED

7" Balsam N 82 E 6.5'

9" Cedar S 26 W 7.5'

AND

DESCRIPTION IN DETAIL AS TO HOW CORNER WAS LOCATED AND IDENTIFIED OR RESTORED.

This corner was established by double proportionate measurement between section corners 1 mile north, 1 mile south, 1 mile east and 2 miles west. Considered most appropriate method for restoration since original line notes are very unreliable in consideration of present conditions. Conforms well with section corner and old fence line between 9 - 10. Measurements to all corners used in this restoration are highly acceptable and reasonably in conformity with the record of the original survey.

SURVEYOR'S SEAL

SIGNED Kenneth J. Ostling DATE June 14, 1962
REGISTERED LAND SURVEYOR