

MICHIGAN
DEPARTMENT OF CONSERVATION
FORESTRY DIVISION

LAND CORNER RECORD

T. 38 N.R. 4 W.

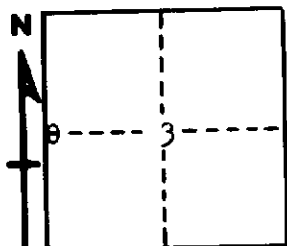
Emmet COUNTY

DESCRIPTION OF CORNER 1/4 corner common to Sections 3 - 4

CORNER MONUMENT Set 1" pipe with 4" brass cap

DATE MONUMENT PLACED AND WITNESSED June 11, 1962

WITNESSES TO CORNER.....



CIRCLE CORNER REGISTERED

7" Cedar S 44 W 9.9'

6" W. Birch S 37 E 4.1'

AND

DESCRIPTION IN DETAIL AS TO HOW CORNER WAS LOCATED AND IDENTIFIED OR RESTORED.

This corner was established by proportionate measurement between section corners north and south while making a survey in this area. Unable to locate evidence of any previous corner. Falls about 1.50 chains east of N - S RR grade. Several blazed trees about 1 chain SE but nothing conclusive.

SURVEYOR'S SEAL

SIGNED *Kenneth Postup* DATE June 11, 1962
REGISTERED AND SURVEYOR