

MICHIGAN
DEPARTMENT OF CONSERVATION
FORESTRY DIVISION

LAND CORNER RECORD

T. 38 N.R. 4 W.

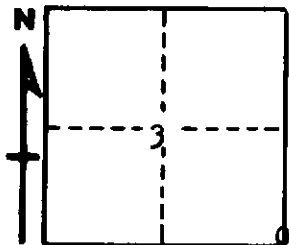
Emmet COUNTY

DESCRIPTION OF CORNER Section corner common to Sections 2 - 3-10 - 11

CORNER MONUMENT Left 1 1/4" pipe in place below surface

DATE MONUMENT PLACED AND WITNESSED May 22, 1962

WITNESSES TO CORNER.....



10" Aspen S 49 W 71.5'

6" Maple N 24 W 132.4'

AND

CIRCLE CORNER REGISTERED

DESCRIPTION IN DETAIL AS TO HOW CORNER WAS LOCATED AND IDENTIFIED OR RESTORED.

This corner was found while making a survey in this area. Found a 3/4" iron bolt set in 1 1/4" pipe at corner, in centerline of N - S road and in line with trail road east. Considered acceptable as proper location for corner.

SURVEYOR'S SEAL

SIGNED

Kenneth J. O'Brien
REGISTERED LAND SURVEYOR

DATE

May 29, 1962