

MICHIGAN
DEPARTMENT OF CONSERVATION
FORESTRY DIVISION

LAND CORNER RECORD

T. 38 N.R. 5 W

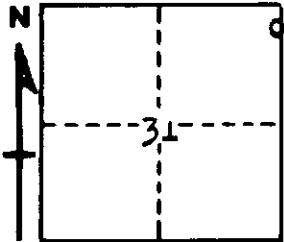
Emmet COUNTY

DESCRIPTION OF CORNER Meander Corner common to Sections 31 -32 on south
side Wycamp Lake

CORNER MONUMENT 1" pipe with 4" brass cap

DATE MONUMENT PLACED AND WITNESSED 5/19/61

WITNESSES TO CORNER.....



14" Dead Tamarack - S33W - 54 links

10" Dead Tamarack - S65E - 28 links

AND

CIRCLE CORNER REGISTERED

DESCRIPTION IN DETAIL AS TO HOW CORNER WAS LOCATED AND IDENTIFIED OR RESTORED.

This corner was restored by Forestry Division survey crew while making a survey in this area. The position for the section line between Sections 31 and 32 was fixed on a mean bearing between the west line of Section 31 and the east line of Section 32. The corner was set at the calculated position for the section line, at record measurement from town line south. Falls at edge of timberline on lake shore at high water.. Unable to identify government BTs, but considered this most acceptable method of restoration since gross inaccuracies in government survey make double proportionate measurement unjustified.

SURVEYOR'S SEAL

SIGNED *Kenneth J. Ostling* DATE May 23, 1961
REGISTERED LAND SURVEYOR