

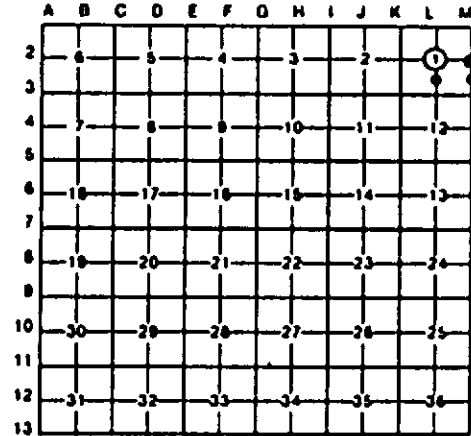
LAND CORNER RECORDATION CERTIFICATE
Filing Requirement of Act 74, Mich. P.A. 1970

For corners in
EMMET

(County)	Located In:	Corner Code --#
1. Public Land Survey	T 38N R 5W	L-2, M-2
	T _____ R _____	_____
	T _____ R _____	_____
	T _____ R _____	_____
2. Property Controlling in Section	S 1 T _____ R _____	12, 14
	S _____ T _____ R _____	_____
3. Miscellaneous Property in Sec.	S _____ T _____ R _____	_____
	S _____ T _____ R _____	_____

Register of Deeds Stamp & File Number

4. Lot No. _____, Recorded Plat _____
 5. Private Claims _____



I, CARL F. ROSER, in a field survey on JULY 12, 19 93, do hereby certify that under requirements of P.A. 74, Michigan P.A. of 1970, the corner points mentioned in lines 1 and 2 above were in conformance with regulations and rules theretofore as required in the current manual of survey instructions of the United States Department of the Interior, Bureau of Land Management or by a decree of a Court of Law and/or that the corner points mentioned in lines 3, 4 and 5 above were in conformance with the rules of the Michigan Board of Land Surveyors or by a Decree of a Court of Law; established, re-established, monumented, re-monumented, recovered, found as expressed below:

NOTE: Not more than 4 corners, all in the same town and range, may be recorded on this certificate.

A. Description of original monument and accessories and/or subsequent restoration:

14	12	M-2	L-2
(NO EVIDENCE OF G.L.O. CORNER, B.T'S, LINE TREES & TOPOGRAPHY, AS CALLED OUT IN THE G.L.O. LINE NOTES; UNLESS NOTED IN ITEM "B" BELOW.)		("B" CONTINUED): 10/12/89. SAIXTON WAS FROM C.E. DEPT OF MICH AG COLLEGE(MSU). IN 1928, RLS FRED SOLL, IN COMPLETE RETRAC. SUR OF T39N-R5W, FOR WILDERNESS STATE PARK, RECOV'D THIS CONC MON & TIED INTO HIS SUR AND NOTED IT ON HIS L6 RETRACEMENT SURVEY MAP.	("B" CONTINUED): WHICH WE FD AS 1/2" ROD W/RLS CAP 024395, IS 50°22'N, 14.30'. OUR CTR OF SEC FALLS IN OLD N-S (2 OR 3 STD) B-M FN. CTR OF DRIVEABLE TRAIL, NW & SE, IS 48'± NORTH AND 84'± EAST.

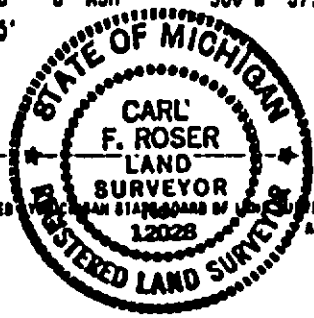
B. Description of corner evidence found and/or method applied in restoring or reestablishing corner:

14	12	M-2	L-2
ESTABLISHED SE COR OF NE 1/4 OF SE 1/4 OF SEC 1 PER STD BLM INSTRUCTIONS. E-W FENCE (ON GROUND) IS 6' NORTH (TO POST BOTTOM).	ESTAB SW COR OF NW1/4 OF SE1/4 OF S-1 MIDWAY & ON LINE BETW S 1/4 COR OF S-1 & CTR OF S-1 (INTERSECT OF 1/4 LINES -THIS, DNR, SUR). THE SE COR OF PARCEL "D" OF CERT SUR BY RLS JOHN FERGUSON, DATED JAN 25, 1980, IS 50°31'N, 19.29'. WE FD 1/2" REROD (NOTE THIS PARCEL "D" COR IS NOT INTENDED TO BE THE 1/8 COR). OLD N-S FN (ON GRD) IS 2' WEST.	FD 4" X 4" SQ CONC MON FOR 1/4 COR CORN TO S-1 (38-5) & S-6 (38-4) USED IN CERT SUR IN S-1 (38-5) BY RLS J. FERGUSON, 1979-80. THIS CONC MON WAS PLACED AT POSITION OF FD SQ CED STK, BY REN G. SAIXTON, REG CIVIL ENGR IN AUG 1922, DURING SUR OF TWP LINE CORN TO T38N-R4 & 5W. HIS NOTES FD BY THIS SURVEYOR AT BLISS TWP HALL, (CONTINUED IN "A")	ESTAB CTR OF S-1 AT INTERSECT OF 1/4 LINES. THE W 1/4 OF S-1 BEING A CALC POSITION IN MUD LK, BASED ON SW COR OF S-1 AS FD AND ACCEPTED BY RLS J. FERGUSON & THIS SURVEYOR. THE TRUE GLO NW COR OF S-1 (SEE K-1) BEING N06°40'E, 36.78' FROM RLS J.F.'S. THEREFORE J.F.'S CTR OF S-1 (HIS CERT SUR OF SW 1/4 OF S-1, 1979-80) (CONTINUED IN "A")

C. Description of monument for corner and accessories established to perpetuate localing the position of the corner:

14	12	M-2	L-2
DROVE 5/8" X 3/4" REROD W/RLS CAP & SET CED POST W/LOC TAG. 4" MAPLE N30°W 21.4' 13" CEDAR N20°E 12.1' 8" CEDAR S20°E 36.8' 6" ASH S40°W 23.4'	DROVE 5/8" X 3/4" REROD W/RLS CAP & SET CED POST W/LOC TAG. 6" CEDAR N25°E 2.7' 7" CEDAR S85°E 6.0' 8" CEDAR S40°E 15.4' 6" CEDAR S85°W 23.0' FD 1/2" REROD, SE COR PARCEL "B" (NOT 1/8 COR) 50°31' N 19.29'	FD 4" X 4" CONC MON WITH 1/2" IRON ROD; ADDED CED POST W/LOC TAG. 10" CEDAR N55°W 20.8' 11" CEDAR N40°E 19.0' 6" CEDAR N55°E 8.5' 6" BALSAM SOUTH 12.08' 47" W BIRCH S70°W 15.85'	DROVE 1" GALV PIPE W/RLS CAP & SET CED POST W/LOC TAG. 5" MAPLE EAST 22.9' 5" BALSAM S10°W 15.0' 7" CEDAR S55°W 36.5' 8" ASH S80°W 37.8'

Signed by Carl F. Roser 12-09-93 Date _____
 Surveyor's Michigan License No. 12028



FORM APPROVED BY THE BOARD OF LAND SURVEYORS, JAN 26, 1971
 REVISED MAY 16, 1975
 REVISED JAN., 1983