

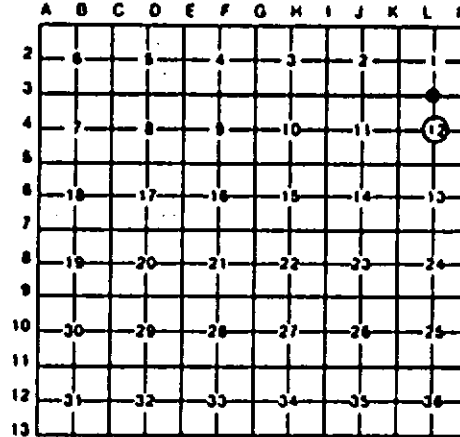
**LAND CORNER RECORDATION CERTIFICATE**  
**Filing Requirement of Act 74, Mich. P.A. 1970**

For corners in  
**ENMET**  
 (County)

Located In: Corner Code *-L-*

- |                                       |                          |                 |
|---------------------------------------|--------------------------|-----------------|
| 1. Public Land Survey                 | T <u>38N</u> R <u>5W</u> | <u>L-3, M-4</u> |
|                                       | T _____ R _____          | <u>L-4, M-3</u> |
|                                       | T _____ R _____          | _____           |
|                                       | T _____ R _____          | _____           |
| 2. Property Controlling in Section    | S _____ T _____ R _____  | _____           |
|                                       | S _____ T _____ R _____  | _____           |
| 3. Miscellaneous Property in Sec.     | S _____ T _____ R _____  | _____           |
|                                       | S _____ T _____ R _____  | _____           |
| 4. Lot No. _____, Recorded Plat _____ |                          |                 |
| 5. Private Claims _____               |                          |                 |

Register of Deeds Stamp & File Number



I, CARL F. ROSER, in a field survey on JULY 13, 19 93, do hereby certify that under requirements of P.A. 74, Michigan P.A. of 1970, the corner points mentioned in lines 1 and 2 above were in conformance with regulations and rules therefore as required in the current manual of survey instructions of the United States Department of the Interior, Bureau of Land Management or by a decree of a Court of Law and/or that the corner points mentioned in lines 3, 4 and 5 above were in conformance with the rules of the Michigan Board of Land Surveyors or by a Decree of a Court of Law; established, re-established, monumented, re-monumented, recovered, found as expressed below:

NOTE: Not more than 4 corners, all in the same town and range, may be recorded on this certificate.

A. Description of original monument and accessories and/or subsequent restoration:

<p><b>L-3</b></p> <p>(NO EVIDENCE OF G.L.O. CORNER, B.T.'S, LINE TREES &amp; TOPOGRAPHY, AS CALLED OUT IN THE G.L.O. LINE NOTES; UNLESS NOTED IN ITEM "B" BELOW.)</p>	<p><b>M-4</b></p> <p>(*B* CONTINUED:)          IN FENCES AT CTR OF SEC WAS CAUSE OF HASSLE W/MCCLEARY ABOUT 1920.</p>	<p><b>L-4</b></p> <p>(*B* CONTINUED:)          INTERSEC E-M-S. COR FITS SOLL 1928 ACCESSORY TIES AND HIS BEARING &amp; DISTANCES TO FD 1/4 COR &amp; SEC COR TO NORTH.</p>
---	---	--

B. Description of corner evidence found and/or method applied in restoring or reestablishing corner:

<p><b>L-3</b></p> <p>FD 5/8" IR ROD; REPLACED WITH 5/8" X 3/4" REROD W/RLS CAP.</p> <p>12" W PINE N50°W 90.52'          8" W PINE N10°W 47.38'          2" W PINE S35°E 38.9'          6" W PINE S45°W 40.67'</p>	<p><b>M-4</b></p> <p>FD 4" X 4" X 2' LONG CONC MON WITH 1/2" IR ROD &amp; 1 1/2" X 4" GALV GUARD PIPE.</p> <p>4" BALSAM N55°W 12.90'          8" CEDAR N40°E 56.55'          8" CEDAR N65°E 37.04'          6" TM CEDAR S75°E 60.40'          17" ASPEN S85°W 8.47'</p>	<p><b>L-4</b></p> <p>DR 5/8" X 3/4" REROD W/RLS CAP &amp; DROVE STEEL FM POST.</p> <p>CTR 5' HIGH 14' WIDE STONE PILE N60°W 134'          7" W PINE S20 E 73.86'          TOP CTR 3' X 2 1/2' HIGH TRI-ANGLE ROCK S35°W 121.9'±2'</p>	<p><b>M-3</b></p> <p>FD 5/8" IR ROD OVER FD 4" X 4" SO CONC MON (SAID CONC MON BEING 16" BELOW THE GRAVEL RD SURFACE. THE SO CONC MON WAS NOTED &amp; TIED IN 1928 SUR OF T39N-R3W BY RLS FRED SOLL (SEE M-1) AND WAS SET BY REM. G. SEXTON AT POSITION OF FD 6" CED POST IN 1922 SUR OF TWP LINE BETW T38N-R4 &amp; 5W (SEE M-2). COR FALLS IN GRAVEL RD (CONTINUED IN "A")</p> <p>GUY POLE N40°W 36.07'          TREATED 4 X 4 POST &amp; METAL TELE RISER N55°E 55.74'          POWER POLE S35°W 39.35'</p>
---	---	---	--

C. Description of monument for corner and accessories established to perpetuate locating the position of the corner:

<p><b>L-3</b></p> <p>FD 5/8" IR ROD; REPLACED WITH 5/8" X 3/4" REROD W/RLS CAP.</p> <p>12" W PINE N50°W 90.52'          8" W PINE N10°W 47.38'          2" W PINE S35°E 38.9'          6" W PINE S45°W 40.67'</p>	<p><b>M-4</b></p> <p>FD 4" X 4" X 2' LONG CONC MON WITH 1/2" IR ROD &amp; 1 1/2" X 4" GALV GUARD PIPE.</p> <p>4" BALSAM N55°W 12.90'          8" CEDAR N40°E 56.55'          8" CEDAR N65°E 37.04'          6" TM CEDAR S75°E 60.40'          17" ASPEN S85°W 8.47'</p>	<p><b>L-4</b></p> <p>DR 5/8" X 3/4" REROD W/RLS CAP &amp; DROVE STEEL FM POST.</p> <p>CTR 5' HIGH 14' WIDE STONE PILE N60°W 134'          7" W PINE S20 E 73.86'          TOP CTR 3' X 2 1/2' HIGH TRI-ANGLE ROCK S35°W 121.9'±2'</p>	<p><b>M-3</b></p> <p>FD 5/8" IR ROD OVER FD 4" X 4" SO CONC MON (SAID CONC MON BEING 16" BELOW THE GRAVEL RD SURFACE. THE SO CONC MON WAS NOTED &amp; TIED IN 1928 SUR OF T39N-R3W BY RLS FRED SOLL (SEE M-1) AND WAS SET BY REM. G. SEXTON AT POSITION OF FD 6" CED POST IN 1922 SUR OF TWP LINE BETW T38N-R4 &amp; 5W (SEE M-2). COR FALLS IN GRAVEL RD (CONTINUED IN "A")</p> <p>GUY POLE N40°W 36.07'          TREATED 4 X 4 POST &amp; METAL TELE RISER N55°E 55.74'          POWER POLE S35°W 39.35'</p>
---	---	---	--

UNIT BY OTHERS (TO SIDE NAILS)

Signed by Carl F. Roser 12-09-93 Date \_\_\_\_\_  
 Surveyor's Michigan License No. 12028

