

LAND CORNER RECORDATION CERTIFICATE
Filing Requirement of Act 74, Mich. P.A. 1970

For corners in
EMMET
 (County)

Located In: Corner Code *≠*

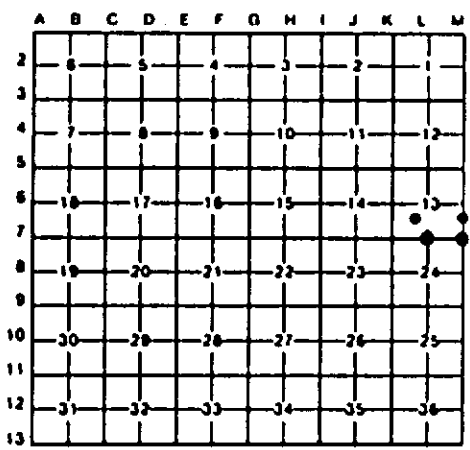
1. Public Land Survey	T	38N	R	6W	L-7, M-7
	T		R		
	T		R		
	T		R		
2. Property Controlling in Section	S		T	R	
	S		T	R	
3. Miscellaneous Property in Sec.	S	13	T	R	1333' N OF M-7.
	S	13	T	R	N34°28' M 1350' FROM L-7.

Register of Deeds Stamp & File Number

4. Lot No. _____, Recorded Plat _____
 5. Private Claims _____

I, CARL F. ROSER, in a field survey on APRIL 19, 19 93, do hereby certify that under requirements of P.A. 74, Michigan P.A. of 1970, the corner points mentioned in lines 1 and 2 above were in conformance with regulations and rules thereto as required in the current manual of survey instructions of the United States Department of the Interior, Bureau of Land Management or by a decree of a Court of Law and/or that the corner points mentioned in lines 3, 4 and 5 above were in conformance with the rules of the Michigan Board of Land Surveyors or by a Decree of a Court of Law; established, re-established, monumented, re-monumented, recovered, found as expressed below:

NOTE: Not more than 4 corners, all in the same town and range, may be recorded on this certificate.



A. Description of original monument and accessories and/or subsequent restoration:
 L-7 M-7 1333'N OF M-7
 (NO EVIDENCE OF S.L.O. CORNER, B.T.'S, LINE TREES AND TOPOGRAPHY, AS CALLED OUT IN THE GLO LINE NOTES, UNLESS NOTED IN ITEM "B" BELOW.)

N34°W OF L-7
 (*B* CONTINUED)
 COR (DROVE 1" X 72" PIPE) WAS RESET FROM 1965 KJO WITS IN ORDER TO REMARK THE DIVISION OF SHORE LINE BETWEEN U.S. MEANDER LINE AND SHORE OF L. MICH. (KJO IS DEPT RLS. RETIRED)

B. Description of corner evidence found and/or method applied in restoring or reestablishing corner:
 L-7 M-7 1333'N OF M-7 N34°W OF L-7
 FD 1965 DEPT MON. COR IS ALSO NOTED IN ORIGINAL GLO SURVEY AS BEING U.S.M.C. FD 1965 DEPT MON. KEN J. OSTLING (KJO) HAD ORIGINAL U.S. EVIDENCE HERE. KJO EQUALS DEPT. RLS (RETIRED). DR 1" X 48" PIPE W/DNR ALUM CAP & ST FN POST AT POS OF DEPT MON (WASHED OUT FROM RECORD L. MICH. HIGH WATER LEVELS IN EARLY 1980'S). MON REESTAB FROM TWO 1965 KJO B.T.'S. COR IS RESTORATION OF U.S.M.C. DR 1" X 60" PIPE, N00°33'20"W, 179.90' PER REC KJO 1965 SUR MAP (KJO SET 1" PIPE IN 1965 - WASHED OUT) FOR DIVISION OF SHORELINE. DR 1" X 72" PIPE W/DNR ALUM CAP & ST FN POST; AT POSITION OF DEPT MON (WASHED OUT FROM RECORD L MICH HIGH WATER LEVELS IN EARLY 1980'S). MON REESTAB FROM TWO 1965 KJO B.T.'S; N34°28'22"W, 1350.15 FT FROM 1/4 COR TO SEC'S 13 & 24. (SAID 1/4 COR IS ALSO U.S.M.C.).

(CONTINUED IN "A")

C. Description of monument for corner and accessories established to perpetuate locating the position of the corner:
 L-7 M-7 1333'N OF M-7 N34°W OF L-7
 FD DNR MON & DROVE 8' STL FN POST. FD DNR MON & DROVE 8' STEEL FN POST ALONGSIDE. DROVE 1" X 48" PIPE W/DNR CAP & DROVE 8' STEEL FN POST. DROVE 1" X 72" PIPE W/DNR ALUM CAP & ST FN POST.
 16° CEDAR S01°E 33.3' 12° R PINE N60°W 5.5' 19° W PINE N72°E 109.0' 4 9° CEDAR S54°E 90.4'
 16° CEDAR N81°E 44.2' 10° R PINE N46°E 15.1' 17° R OAK S86°W 67.9' HIGH PT ON 6" X 6"
 16° ASH N89°E 35.2' 5° R PINE S40°E 9.5' 12° R OAK S20°W 44.4' 14' BOULDER S65°W 94.4'
 24° CEDAR N06°E 30.0' 11° R PINE S34°W 22.3' 15° W PINE S50°E 104.8'

*KJO 1965 WITS.



Signed by Carl F. Roser 12028
 Surveyor's Michigan License No. _____

Date 12-09-93