

**SURVEY &
REMONUMENTATION**

DEED LIBER 2565 PAGE 872

APR 27 1995

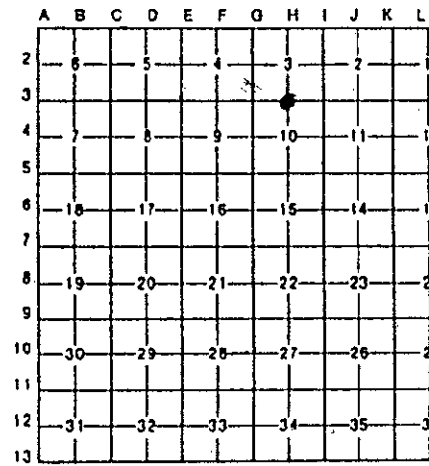
1994 REMONUMENTATION PROGRAM
LAND CORNER RECORDATION CERTIFICATE
Filing Requirement of Act 74, Mich. P.A. 1970

For corners in **COMMISSION**

GENESEE (County)	Located In:	Corner Code =#
	GAINES	
1. Public Land Survey	T 6N R 5E	H-3
	T _____ R _____	_____
	T _____ R _____	_____
	T _____ R _____	_____
2. Property Controlling In Section	S _____ T _____ R _____	_____
	S _____ T _____ R _____	_____
3. Miscellaneous Property In Sec.	S _____ T _____ R _____	_____
	S _____ T _____ R _____	_____

RECORDED
FEB 16 7 37 AM '95
7782
Register of Deeds Stamp & File Number

4. Lot No. _____, Recorded Plat _____
5. Private Claims _____



I, DAVID J. KENNEY, PS in a field survey on, NOVEMBER 9, 19 94, do hereby certify that under requirements of P.A. 74, Michigan P.A. of 1970, the corner points mentioned in lines 1 and 2 above were in conformance with regulations and rules therefore as required in the current manual of survey instructions of the United States Department of the Interior, Bureau of Land Management or by a decree of a Court of Law and/or that the corner points mentioned in lines 3, 4 and 5 above were in conformance with the rules of the Michigan Board of Land Surveyors or by a Decree of a Court of Law; established, re-established, monumented, re-monumented, recovered, found as expressed below:

NOTE: Not more than 4 corners, all in the same town and range, may be recorded on this certificate.

A. Description of original monument and accessories and/or subsequent restoration:

- 1823 GLO; JOHN MULLETT - SET POST - NO ACCESSORIES
- 1988 LCRC, SHELDON BROWN, R.L.S. - SET 1/2" RE-ROD MIDWAY BETWEEN SW COR. & SE COR. 4 ACCESSORIES

B. Description of corner evidence found and/or method applied in restoring or reestablishing corner:

1994 GENESEE COUNTY REMONUMENTATION PROGRAM
SET 1/2" IRON ROD W/CAP ON LINE AND EQUAL DISTANCE BETWEEN SW COR. AND SE COR. OF SECTION 3

1 ACCESSORY FROM LCRC, 1988

Ratified by Peer Group in accordance with P.A. 345, 1990
Co. Barold H. Carls
Date 12-28-94

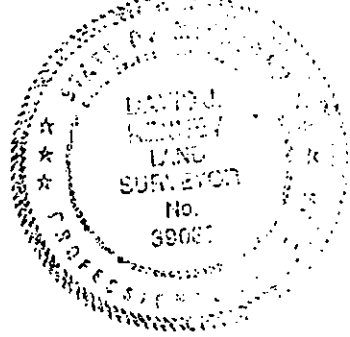
RATIFIED BY GENESEE COUNTY PEER GROUP DECEMBER 28, 1994

C. Description of monument for corner and accessories established to perpetuate locating the position of the corner:

SET STANDARD GENESEE COUNTY MONUMENT

ACCESSORIES:

- N70°W 25.05' SET P.K. & GC TAG IN 12" STUMP
- N45°W 4.50' FOUND NAIL & TAG #9189 IN S. FACE 20" STUMP
- N20°E 6.67' TOP CENTER OF 6' "T" FENCE POST
- N60°E 7.41' TOP CENTER OF 6' "T" FENCE POST
- EAST 650'± CENTERLINE OF SEYMOUR ROAD
- 2672.98' S 1/4 COR. TO SE COR., SECTION 3



Signed by David J. Kenney Date DECEMBER 31, 1994
Surveyor's Michigan License No. 39083