

APR 27 1995

COMMISSION

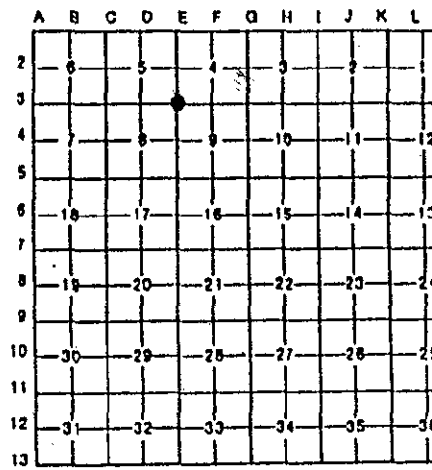
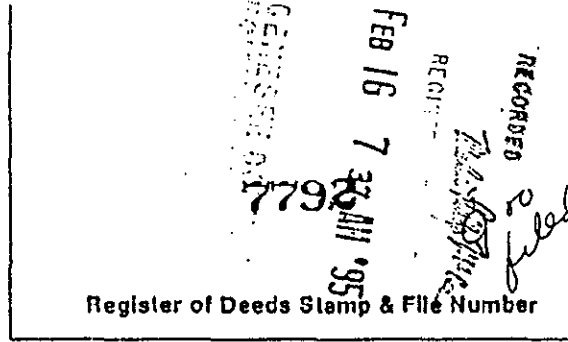
1994 REMONUMENTATION PROGRAM

DEED LIBER 2565 PAGE 882

LAND CORNER RECORDATION CERTIFICATE
Filing Requirement of Act 74, Mich. P.A. 1970

For corners in

Form with fields for GENESEE (County), Located in: MUNDY, Corner Code: E-3, and numbered items 1-5 describing survey details.



DAVID J. KENNEY, P.S. in a field survey on, OCTOBER 26, 19 94, do hereby certify that under requirements of P.A. 74, Michigan P.A. of 1970, the corner points mentioned in lines 1 and 2 above were in conformance with regulations and rules theretofore as required in the current manual of survey instructions of the United States Department of the Interior, Bureau of Land Management or by a decree of a Court of Law and/or that the corner points mentioned in lines 3, 4 and 5 above were in conformance with the rules of the Michigan Board of Land Surveyors or by a Decree of a Court of Law; established, re-established, monumented, re-monumented, recovered, found as expressed below:

NOTE: Not more than 4 corners, all in the same town and range, may be recorded on this certificate.

A. Description of original monument and accessories and/or subsequent restoration:

- List of survey items: 1823 GLO; HARVEY PARKE, D.S. - SET POST - NO ACCESSORIES; 1926 GCRC; FOUND STONE - STAKE - SET 4 ACCESSORIES; 1965 GCRC; FOUND IRON IN PAVEMENT - SET 5 ACCESSORIES; 1988 CARL CARLSON R.L.S. - FOUND 1" IRON - RECORDED 4 ACCESSORIES, L 2330, PAGE 919; 1992 SHELDON BROWN, R.L.S. - FOUND 3/4" SOLID ROD

B. Description of corner evidence found and/or method applied in restoring or reestablishing corner:

1994 GENESEE COUNTY REMONUMENTATION PROGRAM

- 1992 SHELDON BROWN, R.L.S. - FOUND 3/4" SOLID ROD
N45°W NAIL & TAG IN SE FACE POWER POLE 67.77' (MEASURED 67.92')
S40°W NAIL & TAG IN FACE TELEPHONE POLE 77.28' (MEASURED 77.05')
S45°E NAIL & TAG IN NW FACE POWER POLE 72.44' (MEASURED 72.55')

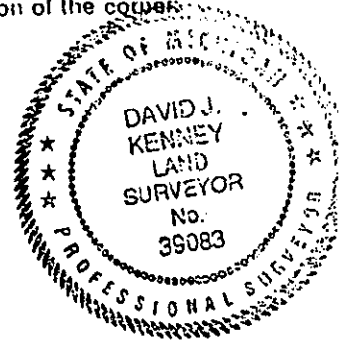
RATIFIED BY GENESEE COUNTY PEER GROUP DECEMBER 21, 1994.

Ratified by Peer Group in accordance with P.A. 345, 1990

Signature of Carl D. Carlson, Date 12-21-94

C. Description of monument for corner and accessories established to perpetuate localing the position of the corner:

- E-3 SET STANDARD GENESEE COUNTY MONUMENT IN MONUMENT BOX
N35°E, FOUND NAIL & TAG IN NW FACE POWER POLE 72.55'
N40°W, FOUND KRAFT CAP & NAIL SE FACE POWER POLE 67.92'
S35°W FOUND NAIL & CAP -W, FACE POWER POLE 77.05'
S45°E FOUND NAIL & CAP - NE FACE POWER POLE 77.00'



Signed by David J. Kenney Date DECEMBER 31, 1994
Surveyor's Michigan License No. 39083