

COMMITTEE &
REMONUMENTATION

APR 27 1995

1994 REMONUMENTATION PROGRAM

DEED LIBER 2565 PAGE 881

COMMISSION

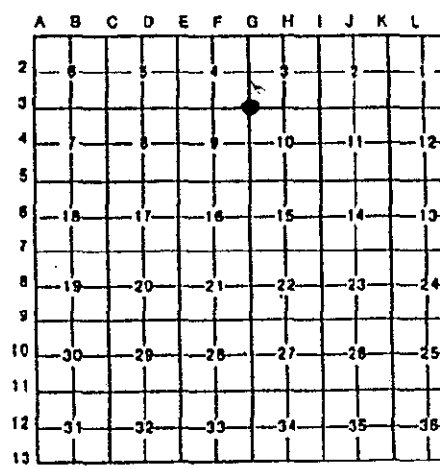
LAND CORNER RECORDATION CERTIFICATE
Filing Requirement of Act 74, Mich. P.A. 1970

For corners in

<u>GENESEE</u> <small>(County)</small>	Located In:	Corner Code =//
	MUNDY	
1. Public Land Survey	T <u>6N</u> R <u>6E</u>	<u>G-3</u>
	T _____ R _____	_____
	T _____ R _____	_____
	T _____ R _____	_____
2. Property Controlling in Section	S _____ T _____ R _____	_____
	S _____ T _____ R _____	_____
3. Miscellaneous Property In Sec.	S _____ T _____ R _____	_____
	S _____ T _____ R _____	_____

RECORDED
FEB 16 7 37 AM '95
7794
Register of Deeds Stamp & File Number

4. Lot No. _____, Recorded Plat _____
5. Private Claims _____



I, DAVID J. KENNEY, P.S. in a field survey on NOVEMBER 14, 19 94
do hereby certify that under requirements of P.A. 74, Michigan P.A. of 1970, the corner points mentioned in lines 1 and 2 above were in conformance with regulations and rules therefore as required in the current manual of survey instructions of the United States Department of the Interior, Bureau of Land Management or by a decree of a Court of Law and/or that the corner points mentioned in lines 3, 4 and 5 above were in conformance with the rules of the Michigan Board of Land Surveyors or by a Decree of a Court of Law; established, re-established, monumented, re-monumented, recovered, found as expressed below:

NOTE: Not more than 4 corners, all in the same town and range, may be recorded on this certificate.

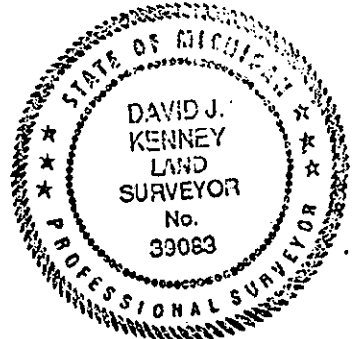
- A. Description of original monument and accessories and/or subsequent restoration:
- 1823 GLO; HARVEY PARKE, D.S. - SET POST - NO ACCESSORIES
 - 1935 GCRC - FOUND PIPE - 6 ACCESSORIES
 - 1965 GCRC - FOUND IRON - 4 ACCESSORIES MEAS. SW COR. TO SE COR.
 - 1974 LCRC, VANCE KUPISCH, R.L.S. - FOUND 1/2" ROD IN MONUMENT BOX - 6 ACCESSORIES
 - 1990 RICHARD KRAFT, R.L.S. - FOUND 1/2" IRON ROD IN MONUMENT BOX, 4 ACCESSORIES

- B. Description of corner evidence found and/or method applied in restoring or reestablishing corner:
- 1994 SET RE-ROD W/KRAFT CAP IN MONUMENT BOX AFTER ROAD CONSTRUCTION
- 2 ACCESSORIES FROM 1965
 - 1 ACCESSORY FROM 1974
 - 1 ACCESSORY FROM 1990

Ratified by Peer Group in accordance with P.A. 345, 1990
cc Reard H. Carlson
Date 12-21-94

RATIFIED BY GENESEE COUNTY PEER GROUP DECEMBER 21, 1994.

- C. Description of monument for corner and accessories established to perpetuate locating the position of the corner:
- SET STANDARD GENESEE COUNTY MONUMENT IN MONUMENT BOX
- ACCESSORIES:
- N40°E 54.33' SE CORNER STEEL TOP INLET
 - S50°E 100.50' NW CORNER BUILDING
 - S45°W 63.70' NW CORNER STEEL TOP INLET
 - N50°W 64.76' TOP CENTER FIRE HYDRANT



Signed by David J. Kenney Date DECEMBER 31, 1994
Surveyor's Michigan License No. 39083