

**SURVEY & REMONUMENTATION**

1994 REMONUMENTATION PROGRAM

DEED LIBER 2565 PAGE 886

APR 27 1995

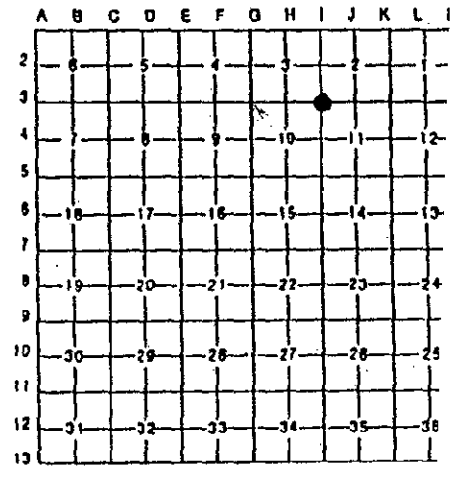
**LAND CORNER RECORDATION CERTIFICATE**  
Filing Requirement of Act 74, Mich. P.A. 1970

For corners in **COMMISSION**

GENESEE (County)	Located In: MUNDY	Corner Code #/
1. Public Land Survey	T <u>6N</u> R <u>6E</u>	<u>I-3</u>
	T _____ R _____	_____
	T _____ R _____	_____
	T _____ R _____	_____
2. Property Controlling In Section	S _____ T _____ R _____	_____
	S _____ T _____ R _____	_____
3. Miscellaneous Property In Sec.	S _____ T _____ R _____	_____
	S _____ T _____ R _____	_____

RECORDED  
FEB 16 7 38 AM 1995  
7796  
Register of Deeds Stamp & File Number

4. Lot No. \_\_\_\_\_, Recorded Plat \_\_\_\_\_  
5. Private Claims \_\_\_\_\_



I, DAVID J. KENNEY, P.S. in a field survey on, NOVEMBER 14, 19 94, do hereby certify that under requirements of P.A. 74, Michigan P.A. of 1970, the corner points mentioned in lines 1 and 2 above were in conformance with regulations and rules therefore as required in the current manual of survey instructions of the United States Department of the Interior, Bureau of Land Management or by a decree of a Court of Law and/or that the corner points mentioned in lines 3, 4 and 5 above were in conformance with the rules of the Michigan Board of Land Surveyors or by a Decree of a Court of Law; established, re-established, monumented, re-monumented, recovered, found as expressed below:

NOTE: Not more than 4 corners, all in the same town and range, may be recorded on this certificate.

- A. Description of original monument and accessories and/or subsequent restoration:
- 1823 GLO; HARVEY PARKE, D.S. - SET POST - NO ACCESSORIES
  - 1965 GCRC - NO DESCRIPTION OF POINT - 4 ACCESSORIES
  - 1966 AMERICAN CIVIL ENGINEERS RECORDED PLAT "ROCKCREEK FARMS" L. 43, PAGES 11 & 12
  - 1990 RICHARD H. KRAFT, R.L.S. - FOUND IRON IN MONUMENT BOX - 4 ACCESSORIES

B. Description of corner evidence found and/or method applied in restoring or reestablishing corner:

1994 GENESEE COUNTY REMONUMENTATION PROGRAM  
3 ACCESSORIES FROM 1965  
3 ACCESSORIES FROM 1990

Ratified by Peer Group in accordance with P.A. 345, 1990  
Co Barold Carlson  
Date 12-21-94

RATIFIED BY GENESEE COUNTY PEER GROUP DECEMBER 21, 1994.



C. Description of monument for corner and accessories established to perpetuate locating the position:

SET STANDARD GENESEE COUNTY MONUMENT IN MONUMENT BOX

N45°E	56.0'	FOUND NAIL & TAG IN POWER POLE
S45°E	53.6'	FOUND NAIL & TAG IN POWER POLE
N45°W	57.5'	FOUND NAIL & TAG IN POWER POLE
S45°W	58.6'	E. BOLT ON MONITORING WELL, SW CORNER OF HILL & TORREY

Signed by David J. Kenney Date DECEMBER 31, 1994  
Surveyor's Michigan License No. 39083