

SURVEY & REMONUMENTATION

MASTER LIBER 4446 PAGE 728

Michael J. McLean

MAY 19 2000

APR 18 11 33 AM '00

SECTION

1999 GENESEE COUNTY REMONUMENTATION PROGRAM
LAND CORNER RECORDATION CERTIFICATE
Filing Requirement of Act 74, Mich. P.A. 1970

GENESEE COUNTY REGISTER OF DEEDS

For corners in

Sec. 2

Genesee (County)	Located In: Grand Blanc	Corner Code #
1. Public Land Survey	T6N R7E	G-13
	T R	
	T R	
	T R	
2. Property Controlling in Section	S T R	
	S T R	
3. Miscellaneous Property in Sec.	S T R	
	S T R	

SUPERSEDES LIBER 4355 PAGE 118

Register of Deeds Stamp & File Number

- 4. Lot No. _____, Recorded Plat _____
- 5. Private Claims _____

	A	B	C	D	E	F	G	H	I	J	K	L	M
1													
2	6		5		4		3		2		1		
3													
4	7		8		9		10		11		12		
5													
6	18		17		16		15		14		13		
7													
8	19		20		21		22		23		24		
9													
10	30		29		28		27		26		25		
11													
12	31		32		33		34		35		36		
13													

I, Kevin B. Cleaver, in a field survey on December 16, 1999, do hereby state that under requirements of P.A. 74, Michigan P.A. of 1970, the corner points mentioned in lines 1 and 2 above were in conformance with regulations and rules therefore as required in the current manual of survey instructions of the United States Department of the Interior, Bureau of Land Management or by a decree of a Court of Law and/or that the corner points mentioned in lines 3, 4 and 5 above were in conformance with the rules of the Michigan Board of Land Surveyors or by a Decree of a Court of Law; established, re-established, monumented, recovered, found as expressed below:

NOTE: Not more than 2 corners, all in the same town and range, may be recorded on this certificate.

A. Description of original monument and accessories and/or subsequent restoration:

- 1815 General Land Office (GLO) fieldnotes: set post w/two accessories
- 1823 GLO fieldnotes: measurement to closing corner
- Undated Genesee County Road Commission (GCRC) records: pipe w/two accessories and closing corner measurement
- 1922 GCRC plans: half-mile measurement
- 1940 GCRC plans: half-mile measurement
- 2/28/74 Land Corner Recordation Certificate (LCRC), Liber 1881, Page 303: set iron
- 12/10/74 Alpha Land Surveying and Engineering, Inc. (Alpha) survey: 1/2" rod and measurement to section corner
- 7/26/79 Gould Engineering, Inc. (GEI) records: unspecified w/four accessories and closing corner measurement
- 1979 GEI records: pk nail, closing corner measurement, and Holly Township half-mile measurement
- 9/4/87 P.A. 132 Certified Survey, Unrecorded: half-mile measurements and measurements to section corner
- 2/2/97 P.A. 132 Certified Survey, Unrecorded: iron, closing corner measurement, and half-mile measurements

B. Description of corner evidence found and/or method applied in restoring or reestablishing corner:

- GLO corner and accessories not found
- Unable to confirm GLO closing corner measurement
- Recovered corner and confirmed closing corner measurement from undated GCRC records
- Confirmed within acceptable tolerance half-mile measurement from 1922 GCRC plans
- Confirmed within acceptable tolerance half-mile measurement from 1940 GCRC plans
- Unable to confirm closing corner measurement from 1974 LCRC
- Recovered corner and confirmed measurement to section corner from 1974 survey
- Recovered corner, two accessories, and confirmed closing corner measurement from 1979 records
- Recovered corner and confirmed closing corner and half-mile measurements
- Confirmed GCRC half-mile measurement and confirmed measurements to section corner from 1987 certified survey
- Recovered corner and confirmed closing corner and half-mile measurements from 1997 certified survey

Ratified by Peer Group in accordance with P.A. 345, 1990
Co. Rep. Carl Carlson
Date 12-1-99

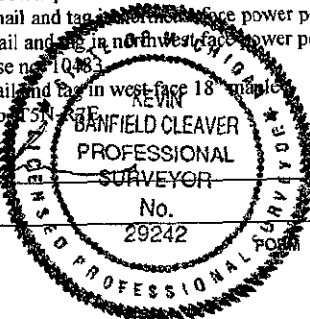
This monument found was ratified by the Genesee County Remonumentation Peer Review Committee on December 1, 1999.

C. Description of monument for corner and accessories established to perpetuate locating the position of the corner:

Set a 6" Bernsten monument SS-A-5BR-30 with 3 1/4" brass cap stamped "Genesee County Remonumentation Corner, 1999, #29242" two inches below grade.

- S 51° W 90.50' found GEI nail and tag in southeast face power pole
- N 42° W 123.55' found Oakland Co. Remonumentation nail and tag in northeast face power pole
- N 25° E 127.88' found Oakland Co. Remonumentation nail and tag in north face power pole
- N 68° E 109.83' southwest corner of brick facing on house no. 10483
- S 16° E 106.86' found Oakland Co. Remonumentation nail and tag in west face 18" maple
- West 5.25' northeast corner of Section 4, Holly Township

Signed by Kevin B. Cleaver
Surveyor's Michigan License No. 29242



Date 4/13/00

*\$900
Filed &
Revised*