

SURVEY & REMONUMENTATION

MAR 05 1998 REGISTER 3685 PAGE 919

RECORDED
 REGISTERED
 DEC 29 11 32 AM '97

**SECTION 1997 REMONUMENTATION PROGRAM
 LAND CORNER RECORDATION CERTIFICATE
 Filing Requirement of Act 74, Mich. P.A. 1970**

For corners in

<u>Genesee</u> (County)	Located In:	Corner Code #
1. Public Land Survey	T <u>6N</u> R <u>7E</u>	<u>L-5</u>
	T _____ R _____	_____
	T _____ R _____	_____
2. Property Controlling in Section	S _____ T _____ R _____	_____
	S _____ T _____ R _____	_____
3. Miscellaneous Property in Sec.	S _____ T _____ R _____	_____
	S _____ T _____ R _____	_____
4. Lot No. _____, Recorded Plat _____		
5. Private Claims _____		

GENESEE COUNTY REGISTER OF DEEDS

Good filed & rec
 Register of Deeds Stamp & File Number

	A	B	C	D	E	F	G	H	I	J	K	L	M
1													
2	6				4					2			1
3													
4	7				9				10	11			12
5													
6	18				16				15	14			13
7													
8	19				21				22	23			24
9													
10	30				28				27	26			25
11													
12	31				33				34	35			36
13													

I, Kevin B. Cleaver, in a field survey on December 10, 19 97 do hereby state that under requirements of P.A. 74, Michigan P.A. of 1970, the corner points mentioned in lines 1 and 2 above were in conformance with regulations and rules therefore as required in the current manual of survey instructions of the United States Department of the Interior, Bureau of Land Management or by a decree of a Court of Law and/or that the corner points mentioned in lines 3, 4 and 5 above were in conformance with the rules of the Michigan Board of Land Surveyors or by a Decree of a Court of Law; established, re-established, monumented, recovered, found as expressed below:

NOTE: Not more than 2 corners, all in the same town and range, may be recorded on this certificate.

A. Description of original monument and accessories and/or subsequent restoration:

- 1823 GLO Set post and two (2) accessories
- June 10, 1880 GCRD County Surveyor records
- Sept. 8, 1952 GCRD Recorded plat of "Bernhard Shady Acres", L 23 P 69
- Nov. 29, 1955 GCRD Recorded plat of "Orchard Haven No. 2" L 28, P 30 and 31
- Dec. 26, 1979 GEI Unrecorded Survey for Mr. Pete Appar - Found Nail 1.9' South of Centerline of Pavement, four (4) accessories
- Jan. 15, 1980 GCRD LCRC, L 2074 P 168 - Set Nail/Tag in asphalt, five (5) accessories
- Feb. 1, 1980 GCRD Certified Survey, L 2074 P 170 - Found Nail 1.9' South of Centerline of Pavement, four accessories
- July 20, 1988 GCRD Recorded plat of "Saw Bridge Estates" L 63 P 44 and 45
- 1990 GBT Using the metes and bound description from an unrecorded L-5 to M-5 measured as 2572
- April 15, 1994 GEI Set Nail/Tag in Asphalt, four (4) accessories
- June 12, 1995 GCRD Certified Survey, L 2578 P 392 - Set Nail/Tag in Pavement, four (4) accessories
- Jan. 20, 1997 GCRD Certified Survey, L 3447 P 702 - Found Nail/Tag in Pavement, four (4) accessories

B. Description of corner evidence found and/or method applied in restoring or reestablishing corner:

Found Nail and Tag

Found distances L-5 to K-5 and L-5 to M-5 from 1823 GLO; Found distances K-3 to L-3, L-3 to M-3, K-4 to L-4, and L-4 to L-5 from June 10, 1880 GCRD records; Found plat monumentation in the recorded plat of "Bernhard Shady Acres" L 23 P 69 September 8, 1952; Found plat monumentation in the recorded plat of "Orchard Haven No. 2" L 28 P 30 - 31 November 29, 1955; Found distance L-5 to K-5 and two (2) accessories from 1979 GEI records; Found three (3) accessories from January 15, 1980 LCRC L 2074 P 168; Found two (2) accessories from February 1, 1980 survey L 2074 P 170; Found distance L-5 to M-5 from the recorded plat of "Saw Bridge Estates" L 63 P 44 - 45 July 20, 1988; Found distance L-5 to M-5 from 1990 Grand Blanc Township records; Found four (4) accessories from April 25, 1994 GEI records; Found four (4) accessories and distance L-5 to K-5 from June 12, 1995 survey L 2578 P 392; Found four (4) accessories from January 20, 1997 survey L 3447 P 702.

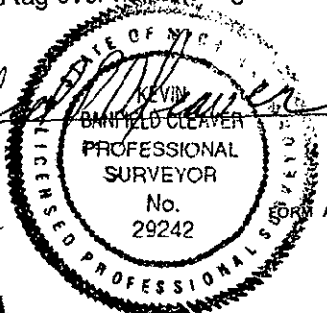
The monument found was ratified by the Genesee County Peer Review Committee on December 11, 1997, as the accepted corner.

C. Description of monument for corner and accessories established to perpetuate locating the position of the corner:

Set the standard Bernsten monument SS-A-5-BR-30 with 3 1/4" brass cap stamped Genesee County Re-monumentation Corner 1997, #29242 in Monument Box.

- North, 51.86' - Found concrete monument
- S 30° W, 50.72' - Found Nail and tag in the Southeast face of a power pole
- N 30° E, 36.76' - Set Re-Mon. nail and tag over nail and tag in the East face of a 15" maple
- S 10° E, 48.06' - Set Re-Mon. nail and tag over nail and tag in the East face of a 12" pine

Sig. by Kevin Banfield Cleaver
 Kevin Banfield Cleaver, P.S.
 Field Manager



Date 12/24/97

Surveyor's Michigan License No. 29242

APPROVED BY MICHIGAN STATE BOARD OF PROFESSIONAL SURVEYORS, JAN. 28, 1971
 Ratified by Peer Group in accordance with P.A. 345, 1990
 REVISED MAY 14, 1975
 REVISED JAN., 1983 REVISED OCT., 1995

Co. Rep. [Signature]
 Date 12-11-97