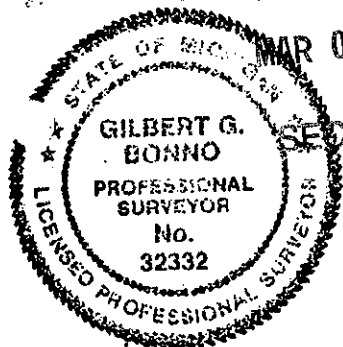


**SURVEY & REMONUMENTATION**

RECORDED

MAR 05 1998 MASTER LIBER 3668 PAGE 64



SECTION

1997 REMONUMENTATION PROGRAM Dec 2 4 33 PM '97

**LAND CORNER RECORDATION CERTIFICATE**

Filing Requirement of Act 74, Mich. P.A. 1970

GENESEE COUNTY

For corners in

Genesee (County)	Located in: Atlas	Corner Code # H-3
1. Public Land Survey	T <u>6N</u> R <u>8E</u>	<u>H-3</u>
	T _____ R _____	_____
	T _____ R _____	_____
	T _____ R _____	_____
2. Property Controlling in Section	S _____ T _____ R _____	_____
	S _____ T _____ R _____	_____
3. Miscellaneous Property in Sec.	S _____ T _____ R _____	_____

1100 filed a rec  
Register of Deeds Stamp & File Number

4. Lot No. \_\_\_\_\_, Recorded Plat \_\_\_\_\_ Ratified by Peer Group in accordance with P.A. 345, 1990

5. Private Claims \_\_\_\_\_  
Co. Rep. Paul Carlson  
Date 11-6-97

I, Gilbert G. Bonno, P.S., in a field survey on November 4, 19 97, do hereby certify that under requirements of P.A. 74, Michigan P.A. of 1970, the corner points mentioned in lines 1 and 2 above were in conformance with regulations and rules therefore as required in the current manual of survey instructions of the United States Department of the Interior, Bureau of Land Management or by a decree of a Court of Law and/or that the corner points mentioned in lines 3, 4 and 5 above were in conformance with the rules of the Michigan Board of Land Surveyors or by a Decree of a Court of Law; established, re-established, monumented, re-monumented, recovered, found as expressed below:

	A	B	C	D	E	F	G	H	I	J	K	L	M
1													
2	6	5	4	3	2	1							
3													
4	7	8	9	10	11	12							
5													
6	18	17	16	15	14	13							
7													
8	19	20	21	22	23	24							
9													
10	30	29	28	27	26	25							
11													
12	31	32	33	34	35	36							
13													

NOTE: Not more than 4 corners, all in the same town and range, may be recorded on this certificate.

**A. Description of original monument and accessories and/or subsequent restoration:**

- 1822, GLO - J. Wampler, DS; set post and 2 accessories.
- 1848 - Julian Bishop CS; post, 2 accessories, measured 39.78 ch between H-3 and I-3, measured 39.72 ch between H-3 and G-3.
- 1929, MDOT construction plans for M-15, "App. Sec. Line", does not show corner.
- 1939 - Survey/tax map, by Gerald W. Smith PS #1531; shows 1/4 cor. (H-3) being W of M-15, also shows 1/8 corner W of 1/4 cor, few dimensions.
- 1973, Recorded survey, L.1868, P.357-359, by Elbex B. Harris PS #9431; doesn't show corner on survey, surveyed to 1/8 line fence, measured 1318.6' for 1/4 mile.
- 1974, Unrecorded survey, by John D. Albright PS #10057, doesn't indicate finding or setting a corner on survey, appears to have doubled over Gould distance of 1318.6' then continued measuring 1316' to 1/8 line fence then continued 1316' to a fence intersection which he called SW cor. Sec. 3, G-3.

**B. Description of corner evidence found and/or method applied in restoring or reestablishing corner:**

1997 Remon - I determined corner to be obliterated. Reestablished position by proportionate measurement between corner G-3 and I-3 utilizing 1848 county surveying notes to confirm position as reestablished. I set Standard Genesee County Remonumentation monument.

In 1823 J. Wampler D.S. indicates a set post for corner H-3 Atlas Township, then in 1848 J. Bishop County Surveyor did a survey of the northeast and northwest quarter section of Section 10 Atlas Township. He indicated a measurement of 39.78 chains from corner I-3 to H-3, and a measurement of 19.86 chains from corner H-3 to the west 1/8 line and a measurement of 19.86 chains from the west 1/8 line to Corner G=3. In the GCRC records of this area along Hill Road, they indicate several accessories for this corner as well as measurements from H-3 to I-3, but no description of the object monumenting H-3 is given. In the 1929 MDOT plans #138 an approximate 1/4 line is indicated, but no description of the object monumenting the corner or accessories to the corner are shown. Two measurements H-3 to H-2 = 2653 and H-3 to H-4 = 2585 are shown on the MDOT plans. A survey by Gerald Smith in 1939 shows a measurement along Hill Road from I-3 to the centerline of State Road (M-15), of 2557. On this drawing he indicates that the 1/4 corner (H-3) falls to the west of the centerline of State Road, but gives no measurements. He does show a measurement from the centerline of State Road to the west 1/8 line of 1396.1 feet. Today I measure 1397.57 feet from the centerline of State Road to the west 1/8 line. In 1973 Gould Engineering performed a survey along the south line of Section 3 of Atlas Township. They show a measurement from I-3 to the east 1/8 line as occupied of 1318.6 feet, but do not show a measurement from I-3 to H-3. In 1974 John Albright performed a survey in Section 3 of Atlas Township along Hill Road. In the process of his survey, he indicates that he used Gould Engineering measurement from I-3 to the east 1/8 line of 1318.6 feet, then doubled that to establish corner H-3. From that position as established he continued measurements to the

**C. Description of monument for corner and accessories established to perpetuate locating the position of the corner:**

- East 22.23' Found 1/2" pipe & red plastic cap (unreadable)
- 82.02' Found 1/2" re-rod in monument box, property controlling corner, L. \_\_\_\_\_, P. \_\_\_\_\_
- West 63.16' Set Genesee County tag in N fc 16" elm
- S45E 13.27' Set Genesee County tag in NE fc inc post
- S30E 58.34' Set Genesee County tag in E fc p/p

Ratified by Genesee County Peer Group November 6, 1997.  
I set the standard Bernsten Monument SS-A-5-BR-30 (3 1/4" D. Brass cap stamped "Genesee County Remonumentation Corner 32332, 1997") with 30" x 2 3/8" O.D. stainless steel tube set in a monument box.

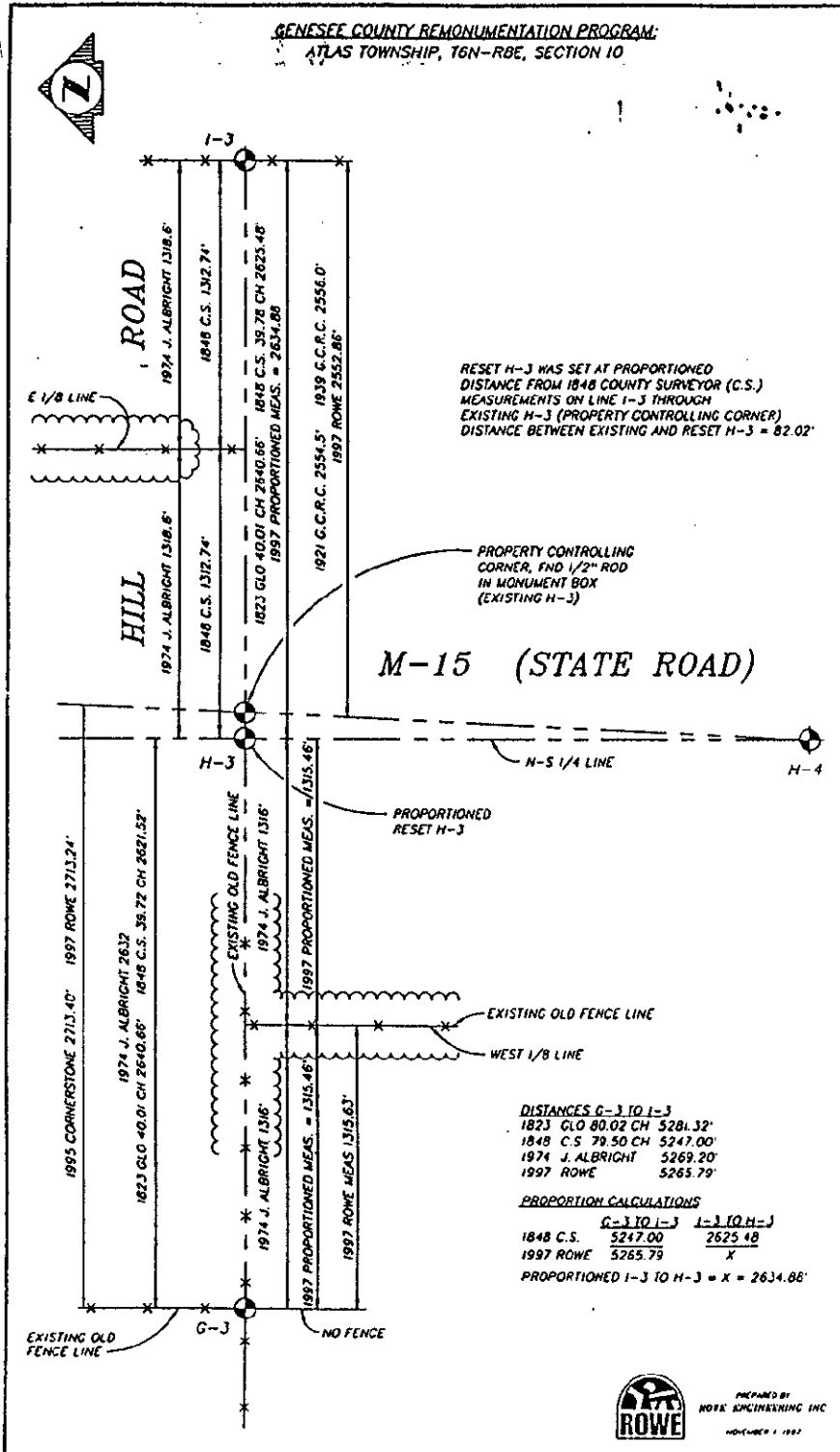
Signed by Gilbert G. Bonno  
Surveyor's Michigan License No. 32332

Date 11/6/97

SURVEY & REMONUMENTATION

MAR 05 1998

SECTION



DISTANCES G-3 TO 1-3

1823 GLO 80.02 CH	5281.32'
1848 C.S. 79.50 CH	5247.00'
1974 J. ALBRIGHT	5269.20'
1997 ROWE	5265.79'

PROPORTION CALCULATIONS

	G-3 TO 1-3	1-3 TO H-3
1848 C.S.	5247.00	2625.48
1997 ROWE	5265.79	X
PROPORTIONED 1-3 TO H-3 = X = 2634.88'		



B. Cont'd

west from H-3 to the west 1/8 line of 1316 feet and from the west 1/8 line to G-3 of 1316. On his survey he gives no description of the object monumenting H-3 or any accessories, but does indicate it as the north-south 1/4 line. Today in the 1997 remonumentation program I am finding a monument box with a 1/2" re-rod monumenting what has been used as the position of H-3. This monument box appears to have been placed sometime prior to 1996 from its call in a LCRC Liber 3324, Page 748 by P.S. No. 29248. From 1991 until 1996, it was described as a PK Nail. In my research of this corner from various sources and field observation I feel that the position of H-3 in the field as it is currently being used, is actually a P.I. for a curve in this area of State Road (M-15). This point actually falls 11.5 feet east of centerline of State Road (M-15) and 3.5 feet north of the centerline of Hill Road. The area where Hill Road and State Road intersect appears to be on the high side of a depression to the west. From my research in the office as well as field measurements between G-3, H-3 as currently used, 1-3 and the east 1/8 line and west 1/8 line, I feel that the position of H-3 is actually an obliterated corner. Utilizing the 1997 measurement from G-3 to 1-3, the measurements to the various 1/8 lines and proportioning these current measurements with the 1848 county surveyor measurements, places the position for H-3 82.02 west of the position as it is currently being used. This new position would correspond within 2.4 feet of the 1974 Albright survey, also the measurements between G-3 to H-3 would match within 0.8 feet from Albright's 1974 survey to the 1997 proportioned position. I placed the proportioned position of H-3 82.02 feet west of and on line through corner 1-3 and the position of H-3 (now termed property controlling corner) as it has been used from 1920 to present. I accept the proportioned position of corner H-3 as careful and faithful re-establishment of this corner and that the object in place now being used, be referenced as a property controlling corner. Based upon the above evidence I accept the proportioned position of corner H-3 as a careful and faithful re-establishment of the original corner H-3 relative to the 1823 GLO survey and the 1848 county surveyor records.