

1  
2  
3  
4  
5  
6  
7  
8  
9  
10  
11  
12  
13

SURVEY & REMONUMENTATION

MAY 20 1997

COMMISSION

1996 REMONUMENTATION PROGRAM  
LAND CORNER RECORDATION CERTIFICATE  
Filing Requirement of Act 74, Mich. P.A. 1970

MASTER LIBER 3436 PAGE 811

For corners in

Genesee (County)	Located In:	Corner Code #
1. Public Land Survey	T <u>7N</u> R <u>5E</u>	<u>C-5</u>
	T _____ R _____	_____
	T _____ R _____	_____
	T _____ R _____	_____
2. Property Controlling in Section	S _____ T _____ R _____	_____
	S _____ T _____ R _____	_____
3. Miscellaneous Property in Sec.	S _____ T _____ R _____	_____
	S _____ T _____ R _____	_____

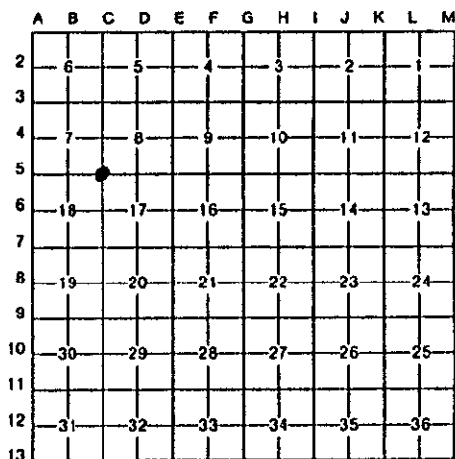
8353A

RECORDED  
REGISTERED  
DEC 30 11 37 AM '96  
900

Register of Deeds Stamp & File Number

4. Lot No. \_\_\_\_\_, Recorded Plat \_\_\_\_\_  
5. Private Claims \_\_\_\_\_

I, Kevin B. Cleaver, PS in a field survey on October 18, 1996 do hereby certify that under requirements of P.A. 74, Michigan P.A. of 1970, the corner points mentioned in lines 1 and 2 above were in conformance with regulations and rules therefore as required in the current manual of survey instructions of the United States Department of the Interior, Bureau of Land Management or by a decree of a Court of Law and/or that the corner points mentioned in lines 3, 4 and 5 above were in conformance with the rules of the Michigan Board of Land Surveyors or by a Decree of a Court of Law; established, re-established, monumented, re-monumented, recovered, found as expressed below:



NOTE: Not more than 4 corners, all in the same town and range, may be recorded on this certificate.

A. Description of original monument and accessories and/or subsequent restoration:

- 1821, GLO Set post, with 2 accessories
- Date ? GEI records, brick crock, with 4 accessories
- May 18, 1972 Survey, L-1823, P-559, fnd re-rod, with 3 accessories
- 1973 Survey, L-1857, P-13, fnd 3" pipe, set 1/2" rod inside of pipe, with 3 accessories
- 1973 GEI records, fnd 3" pipe, with 1/2" rod inside, with 3 accessories
- July 6, 1978 Survey, L-2016, P-196 and 197, fnd re-rod, with 3 accessories
- Aug. 17, 1978 Survey, L-2022, P-612, with 3 accessories
- Oct. 1, 1993 LCRC, L-2513, P-349, fnd 1/2" rod, with 4 accessories
- Oct. 14, 1993 Survey, L-2515, P-726 and 727, fnd rod, with 4 accessories

B. Description of corner evidence found and/or method applied in restoring or reestablishing corner:

Fnd 1/2" re-rod over a 3" pipe with 1/2" rod inside, inside of a brick crock; fnd brick crock from GEI records; fnd re-rod and 1 accessory from 1972 survey L-1823, P-559; fnd 3" pipe with 1/2" rod inside and 1 accessory from 1973 survey L-1857, P-13; fnd re-rod and 1 accessory from July, 1978 survey, L-2016, P-196 and 197; fnd 1 accessory from Aug. 17, 1978 survey, L-2022, P-612; fnd 1/2" rod and 3 accessories from Oct. 1, 1993 LCRC, L-2513, P-349; fnd rod and 3 accessories from Oct. 14, 1993 survey L-2515, P-726 and 727.

The monument found was ratified by the Genesee County Peer Review Committee on October 9, 1996, as the accepted corner.

Ratified by Peer Group in accordance with P.A. 345, 1990

Co. Rep. Carl Barkman  
Date 10-9-96

C. Description of monument for corner and accessories established to perpetuate locating the position of the corner:

Set in concrete the standard Bernsten monument SS-A-5-BR-30, with 3/4" brass cap stamped Genesee County Remonumentation corner 1996 #29242 over a found 1/2" re-rod over a 3" pipe with 1/2" rod inside and inside a brick crock.

- N 45° E 37.78' Fnd chiseled 'v' notch in top of North end of 18" CSP
- S 50° E 35.77' Fnd chiseled 'v' notch in top of South end of 18" CSP
- S 50° W 69.03' Set remon. tag in the Northwest face of power pole
- N 45° E 46.56' Fnd re-rod and cap #33134

Signed by Kevin Banfield Cleaver  
Kevin Banfield Cleaver, PS, It. Field Manager  
Surveyor's Michigan License No. 29242

