

REMONUMENTATION CORNER UNDER ACT 345, MICHIGAN PUBLIC ACTS OF 1990
LAND CORNER RECORDATION CERTIFICATE
 Filing Requirement of Act 74, Mich. P.A. 1970

RECORDED
 RECORDED
 Dec 21 9 11 AM '93
 GENESEE COUNTY
 FLINT MICHIGAN
 77970

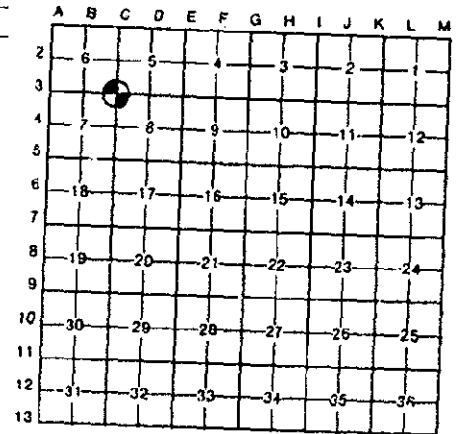
For corners in
GENESEE
 (County)

Located In: Danison Corner Code #4

1. Public Land Survey	T	7N	R	8E	C-3
	T		R		
	T		R		
	T		R		
2. Property Controlling in Section	S		T	R	
	S		T	R	
3. Miscellaneous Property in Sec.	S		T	R	
	S		T	R	

Register of Deeds Stamp & File Number 100

4. Lot No. _____ Recorded Plat _____
 5. Private Claims _____



I, Donald G. Richards, in a field survey on December 3, 1993, do hereby certify that under requirements of P.A. 74, Michigan P.A. of 1970, the corner points mentioned in lines 1 and 2 above were in conformance with regulations and rules therefore as required in the current manual of survey instructions of the United States Department of the Interior, Bureau of Land Management or by a decree of a Court of Law and/or that the corner points mentioned in lines 3, 4 and 5 above were in conformance with the rules of the Michigan Board of Land Surveyors or by a Decree of a Court of Law; established, re-established, monumented, re-monumented, recovered, found as expressed below:

NOTE: Not more than 4 corners, all in the same town and range, may be recorded on this certificate.

A. Description of original monument and accessories and/or subsequent restoration:

Joseph Wampler and field party
 fall 1821
 N 67 E 10 a Beech 8 in dmtr
 N 83 W 19 a Maple 20 in dmtr
 (see reverse side for additional information)

B. Description of corner evidence found and/or method applied in restoring or reestablishing corner:

Found 1" Iron in Monument Box

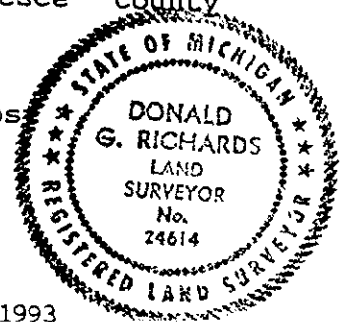
**SURVEY &
 REMONUMENTATION**

MAR 16 1994

COMMISSION

C. Description of monument for corner and accessories established to perpetuate locating the position of the corner:

Set Bernsten monument SS-A5BR-30 stamped "Genesee County Remonumentation Corner" over 1" iron in Monument Box
 S 45 W 69.93' nail/GCWT* in NW face power pole
 N 45 W 69.38' nail/GCWT in SE face power pole
 N 50 E 89.00' to center of SW anchor bolt of light post
 S 55 E 78.03' nail/GCWT in NW face power pole
 WEST 2640.08' quarter corner B-3, T7N-R8E
 EAST 2575.68 quarter corner D-3, T7N-R8E
 (* Genesee County Witness Tag)



Signed by DONALD G. RICHARDS  Date December 10, 1993

Surveyor's Michigan License No. 24614

APPROVED by Genesee County Monumentation Peer Group 12-01-93

GCRC TIES

DEED
LIBER 2520 PAGE 911

No. 72: Iron in pavement
SW 53.8 util pole
SOUTH 34.4 NW cor culv headwall
SE 61.5 12" Maple
NW 53.5 SW cor gas sta

PA 74

pg 28 (2033/564) A.F. Miller 7-10-78
Found iron
P.P. S 50 E 77.94
Sign S 45 W 83.60
Shell Sign N 45 E 75.4

pg 58 (2392/158-159) Grant J. Ward 5-9-90
Found 1" Bar in Monument Box
S 45 W 69.89 found nail/disc in NW face utility pole
N 49 W 69.22 found nail/disc in SE face utility pole
S 57 E 77.98 found nail/disc in NW face utility pole
N 75 W 184.53 set 60d spike/disc #22445 in S face utility pole

PA 132 SURVEYS

George F. Misjak 10-30-92
Found Bolt Spike in Mon Box
N 70 E 150.47 SW bolt on South leg of Shell Food Mart Sign
S 50 E 78.15 TP
S 45 E 78.87 Sign Post
S 45 W 69.98 PP
N 45 W 69.36 PP

GCRC FIELDBOOK

SW cor Sec 5: found 1" iron bar under bit cap in conc on centerline
expansion joint of Irish Road
S 45 W 83.60 sign
N 45 E 75.4 Shell sign
S 50 E 77.94 power pole