

REMONUMENTATION CORNER UNDER ACT 345, MICHIGAN PUBLIC ACTS OF 1990

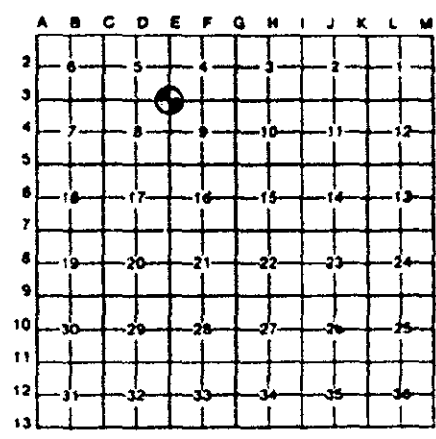
LAND CORNER RECORDATION CERTIFICATE  
Filing Requirement of Act 74, Mich. P.A. 1970

For corners in

<u>GENESEE</u> <small>County</small>	Located In <u>Wilmerson</u>	Corner Code # <u>E-3</u>
1. Public Land Survey	T <u>7N</u> R <u>8E</u>	<u>E-3</u>
	T _____ R _____	_____
	T _____ R _____	_____
	T _____ R _____	_____
2. Property Controlling in Section	S _____ T _____ R _____	_____
	S _____ T _____ R _____	_____
3. Miscellaneous Property in Sec	S _____ T _____ R _____	_____
	S _____ T _____ R _____	_____

4. Lot No. \_\_\_\_\_ Recorded Plat \_\_\_\_\_  
5. Private Claims \_\_\_\_\_

RECORDED  
1100  
Dec 27 9 11 AM '93  
GENESEE COUNTY  
FLINT MICHIGAN  
77972  
FILED & RECORDED  
Register of Deeds Stamp & File Number



I, DONALD G. RICHARDS in a field survey on December 3 19 93  
do hereby certify that under requirements of P.A. 74, Michigan P.A. of 1970, the corner points mentioned in lines 1 and 2 above were in conformance with regulations and rules therefore as required in the current manual of survey instructions of the United States Department of the Interior, Bureau of Land Management or by a decree of a Court of Law and/or that the corner points mentioned in lines 3, 4 and 5 above were in conformance with the rules of the Michigan Board of Land Surveyors or by a Decree of a Court of Law, established, re-established, monumented, re-monumented, recovered, found as expressed below:

NOTE: Not more than 4 corners, all in the same town and range, may be recorded on this certificate.

A. Description of original monument and accessories and/or subsequent restoration.

Joseph Wampler and field party  
fall 1821  
N 40 E 6 lks an Ash 14 in dmtr  
N 70 W 08 an Elm 8 in dmtr  
(see reverse side for additional information)

B. Description of corner evidence found and/or method applied in restoring or reestablishing corner:

Found empty Monument Box

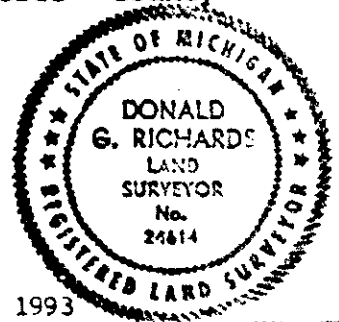
SURVEY &  
REMONUMENTATION

MAR 16 1994

COMMISSION

C. Description of monument for corner and accessories established to perpetuate locating the position of the corner

Set Bernsten monument SS-A5BR-30 stamped "Genesee County Remonumentation Corner" in empty Monument Box  
S 50 W 78.98' nail/GCWT\* in NE face power pole  
N 40 W 61.94' nail/GCWT in SE face power pole  
N 40 E 147.47' SW corner of building ("John's Pizza")  
S 45 E 64.78' nail/GCWT in N face power pole  
WEST 2430.89' quarter corner D-3, T7N-R8E  
EAST 2625.72' quarter corner F-3, T7N-R8E  
(\* Genesee County Witness Tag)



Signed by DONALD G. RICHARDS  Date December 10, 1993

Surveyor's Michigan License No 24614  
APPROVED by Genesee County Monumentation Peer Group 12-01-93

GCRC TIES

No. 54: unidentified  
NW 48.8 apple  
SW 45.9 2nd post south of fence intersection  
SE 58.3 util pole

PA 74

pg 7 (1863/102-103 chmp) Karol R. Piotrowski 7-23-73  
Found nail/tag  
Telephone pole S 45 E 64.15  
Telephone pole S 50 W 78.61  
Telephone pole N 45 W 62.07

PA 132 SURVEYS

none