

MAY 31 2000

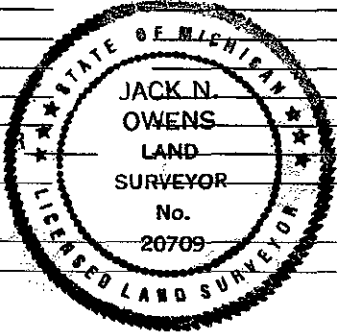
DEED LIBER 2564 PAGE 558

LAND CORNER RECORDATION CERTIFICATE

Filing Requirement of Act 74, Mich. P.A. 1970

RECORDED REGISTERED OF DEEDS FEB 1 10 17 AM '95

For corners in Genesee (County) Located In: Corner Code # 1. Public Land Survey T 7N R 8E M-12 2. Property Controlling in Section S T R 3. Miscellaneous Property in Sec. S T R 4. Lot No. Recorded Plat 5. Private Claims



5503 Register of Deeds Stamp & File Number

Grid table with columns A-M and rows 1-13. Contains numbers 1-36 in a grid pattern.

I, Jack N. Owens, in a field survey on DEC. 9 19 94, do hereby certify that under requirements of P.A. 74, Michigan P.A. of 1970, the corner points mentioned in lines 1 and 2 above were in conformance with regulations and rules therefore as required in the current manual of survey instructions of the United States Department of the Interior, Bureau of Land Management or by a decree of a Court of Law and/or that the corner points mentioned in lines 3, 4 and 5 above were in conformance with the rules of the Michigan Board of Land Surveyors or by a Decree of a Court of Law, established, re-established, monumented, re-monumented, recovered, found as expressed below.

NOTE: Not more than 4 corners, all in the same town and range, may be recorded on this certificate.

A. Description of original monument and accessories and/or subsequent restoration:

1821, GLO-J. WAMPLER, PS; GLO NOTES STATE THAT MEASURING NORTH FROM M-13 AT "40.00 CHS. 1/4 COR. IN LAKE HASSLER" THUS THE DEPT. SUR. GIVES A POSITION FOR THE COR BUT FOLLOWS THAT WITH BRIEF NOTES ON AN OFFSET TRAVERSE AROUND LAKE. HE ALSO NOTES DISTANCES TO S. & N. SHORES OF LAKE (HASSLER LAKE) WHICH FOLLOW HIS TRAVERSE, (HE ALSO SET CLOSING COR. FOR T6 & 7N, R9E 4 YEARS EARLIER BUT I CONCLUDE IT IS NO DIFFERENT THAN OTHER CLOSING COR. & DOESN'T CONTROL LINE.) HIS NOTES SEEM TO INDICATE HE SET THE S. 1/8 COR. IN 1817, 1821 & 1822. IT APPEARS A LAPEER CO. SUR. USED THE CLOSING COR. IN A 1872 SUBDIVISION SUR. OF SEC. 31, T7N-R9E. 1974, CERT. SUR. (L.1904, P.33)-G.R. STONEROCK, PS13601, SURVEY OF E. LINE SEC. 36 SHOWS HE RETRACED AS STRAIGHT LINE & RE-ESTABLISHED S 1/8 COR. AT PROPORTIONATE POSITION IN ALIQUOT SUBDIVISION OF SEC. 36.

B. Description of corner evidence found and/or method applied in restoring or reestablishing corner:

I RETRACED THE E. LINE SEC. 36 IN VIRTUALLY IDENTICAL AGREEMENT WITH G.R. STONEROCK. THE OLD FNC S OF LAKE HAS LARGE TREES ALONG IT AND VERY OLD FNC POSTS N. OF LAKE VERY CLOSE TO LINE, BOTH BEING GOOD COLLATERAL EVIDENCE OF LONG PERPETUATED LINE. I CONCLUDE WAMPLER RAN GOOD STRAIGHT LINE BUT HIS GLO OFFSET TRAVERSE MISMEASUREMENT MILE, BEING 90' (1.4 CHS) LONGER THAN RECORD. DISTANCE TO S. SHORE (1/8 COR) ABOUT 80' SHORT & TO N. SHORE, ABOUT 70' SHORT. THESE PROBABLY REPRESENT HIS TRAVERSE POINTS NEAR SHORE, NOT THE ACTUAL SHORE. G.R. STONEROCK S 1/8 COR. END LYING DOWN. I ALSO CONCLUDE TO RETRACE E. LINE AS ST. LINE BETWEEN COR. M-11 TO M-13. WILL SET TWO POINTS MONUMENTED AS WITNESS CORNERS TO REFERENCE THE POSITION OF THE 1/4 COR. WHICH WAS NOT MONUMENTED BUT NOTED IN THE GLO RECORD. THIS WILL ALLOW RETRACEMENTS OF LINE WITHOUT TRAVERSING ENTIRE MILE AND ALSO FIX COUNTY BOUNDARY. I ALSO FND CLOSING COR. TO T6 & 7N, R9E (UNRECORDED & UNCAPPED), A 1/2" REROD 0.14' E. OF LINE WHICH WAS WITNESSED & SET WITHIN LAST 3 YRS. BASED ON AGE OF BRUSHED LINE.

RATIFIED BY GEN. CO. PEER GROUP DEC. 7, 1994.

C. Description of monument for corner and accessories established to perpetuate locating the position of the corner:

N'LY WIT. COR. 10' N OF SHORE LINE AT N. END MARSH (MARSH=5' SW) 2110.65' N. OF E 1/4 COR. 4" ABOVE GRADE N11W 26.62' SET 40D/GCREMON TAG E. FC. 8" OF 8"-4" FORKED RED MAPLE SOUTH, 23.03' SET 40D/GCREMON TAG E. FC. 16" RED MAPLE S81E 32.24' SET 40D/GCREMON TAG N. FC. 11" R. MAPLE N89W, 17.18' SET 40D/GCREMON TAG N. FC. 33" MULTIPLE STEM RED MAPLE S'LY WIT. COR. 70' S. OF SHORE LINE 1342.79' S. OF E. 1/4 COR. FLUSH W. GRD S69E, 30.87' SET 40D/GCREMON TAG NNE FC 6" W ASH N25W, 38.57' SET 40D/GCREMON TAG WSW FC TWIN 6" BLACK WILLOW S83W, 76.14' SET 40D/GCREMON TAG N. FC 8" BLACK WILLOW S13W 65.08' SET 40D/GCREMON TAG W. FC. TWIN 26" RED MAPLE I SET THE STANDARD BERNSTEN MONUMENT SS-A-5-BR-30 (3 1/4" D. BRASS CAP STAMPED "GENESEE COUNTY REMONUMENTATION COR. WIT. COR., 20709, 1994" WITH 30" X 2 3/8" O.D. STAINLESS STEEL TUBE) FOR BOTH WITNESS CORNERS NEAR SHORELINE OF HASSLER LAKE ON E. LINE OF SEC.

Signed by Jack N. Owens Date Dec 30, 1994 Surveyor's Michigan License No. 20709

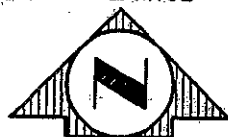
Ratified by Peer Group in accordance with P.A. 345, 1990 Co. Rep. Paul Carlson Date 12-7-94



99

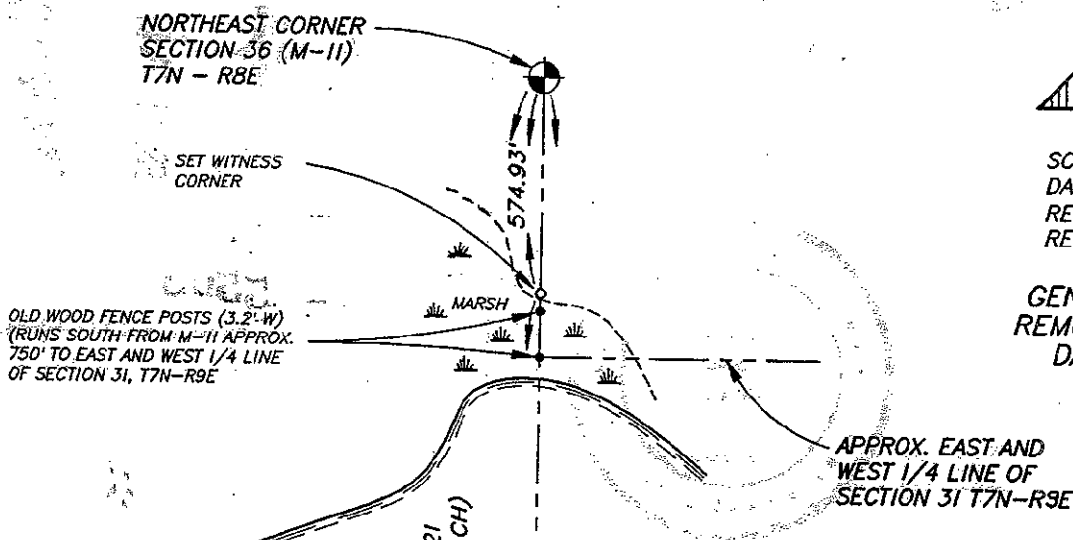
CERTIFIED SURVEY
 EAST LINE OF SECTION 36
 T7N-R8E, DAVISON TWP.

DEED LIBER ~~2561~~ PAGE ~~66~~
 DEED LIBER 2564 PAGE 559



SCALE: 1" = 500'
 DATE: NOV. 9, 1994
 REV: NOV 11, 1994
 REV: DEC 14, 1994

GENESEE COUNTY
 REMONUMENTATION
 DAVISON TWP.



SURVEY &
 REMONUMENTATION

MAY 31 2000

SECTION

GENESEE
 COUNTY

DAVISON TWP.

HASLER

G.L.O. (2640') 40.00 CH 1821
 DUE NORTH 2685.58' (40.691 CH)

2110.65'

TOTAL MILE = 5371.16' (81.381 CH) 1994
 G.R.S. 5371.08' (81.380 CH) 1974
 G.L.O. (5280') 80.00 CH 1821

LAPEER
 COUNTY

ELBA TWP.

GENESEE COUNTY
 REGISTER OF DEEDS

RECORDED
 REGISTER OF DEEDS
 Dec 28 3 31 PM '94

MID-POINT (IN LAKE)
 (POSITION FOR 1/4
 CORNER, M-2, BUT NOT
 SET IN G.L.O. SURVEY)

LAKE

SHORE LINE IS GRAPHICALLY
 SHOWN FROM AERIAL PHOTO.

CORNER SET AS CLOSING CORNER
 TO INTERSECT COUNTY LINE (TWP. LINE)
 FND. 1/2" REROD (0.14' E) G.L.O. 1817 / 1821

T7N-R9E
 T6N-R9E

EAST LINE OF SECTION 36
 AND COUNTY LINE. (STRAIGHT
 LINE BETWEEN CORNERS M-11
 AND M-13, PER G.L.O. RECORD)

G.L.O. (2640') 40.00 CH 1821
 DUE NORTH 2685.58' (40.691 CH) 1994

G.L.O. (1320') 20.00 CH 1817
 1342.77' (20.345 CH) 1974
 1342.79' (20.345 CH) 1994

G.L.O. (2079') 31.50 CH 1817
 G.L.O. CORRECTED (2013') 30.50 CH
 2012.75' (30.496 CH) 1994

SET WITNESS
 CORNER

HADLEY TWP.

SOUTHEAST CORNER
 SECTION 36 (M-13)
 T7N-R8E

73966



Jack N. Owens

SHEET 1 of 3

ROWE ENGINEERING INC.

FLUSHING CORUNNA CARO Mt. PLEASANT
 1449 E. Pierson 112 E. McArthur 166 N. State 127 S. Main
 410-650-3103 517-743-6363 517-673-2636 517-772-2138