

Ratified by Peer Group in accordance with P.A. 345, 1990

DEED LIBER 2601 PAGE 929

Co. Rep. Carl Vanhook  
Date Jan 9, 1996

1995 Remonumentation Program  
LAND CORNER RECORDATION CERTIFICATE  
Filing Requirement of Act 74, Mich. P.A. 1970

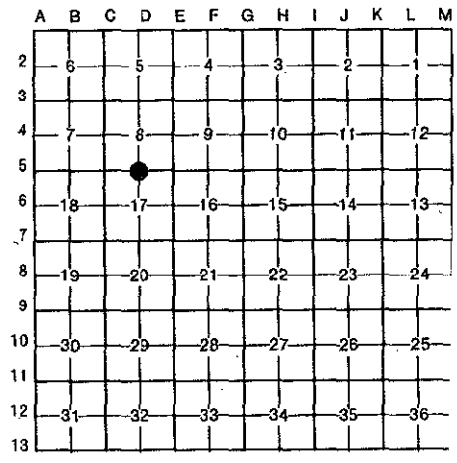
Genesee (County)	Located In:	Corner Code #
1. Public Land Survey	T <u>8N</u> R <u>6E</u>	<u>D-5</u>
	T _____ R _____	_____
	T _____ R _____	_____
	T _____ R _____	_____
2. Property Controlling in Section	S _____ T _____ R _____	_____
	S _____ T _____ R _____	_____
3. Miscellaneous Property in Sec.	S _____ T _____ R _____	_____
	S _____ T _____ R _____	_____

RECORDED  
REGISTERED  
JAN 11 2 09 PM '96  
GENESEE COUNTY REGISTER OF DEEDS

2351  
Register of Deeds Stamp & File Number  
9.00  
J. Vanhook

4. Lot No. \_\_\_\_\_, Recorded Plat \_\_\_\_\_  
5. Private Claims \_\_\_\_\_

I, Kevin B. Cleaver, P.S., in a field survey on September 15, 19 95, do hereby certify that under requirements of P.A. 74, Michigan P.A. of 1970, the corner points mentioned in lines 1 and 2 above were in conformance with regulations and rules therefore as required in the current manual of survey instructions of the United States Department of the Interior, Bureau of Land Management or by a decree of a Court of Law and/or that the corner points mentioned in lines 3, 4 and 5 above were in conformance with the rules of the Michigan Board of Land Surveyors or by a Decree of a Court of Law; established, re-established, monumented, re-monumented, recovered, found as expressed below:



**NOTE: Not more than 4 corners, all in the same town and range, may be recorded on this certificate.**

A. Description of original monument and accessories and/or subsequent restoration:

- 1821± Set 1/4 post at average distance with two (2) accessories
- 1915, GCRC Project A-8164 C-9, route and course description
- 1954, CP Co. Iron with two (2) accessories
- 1992 Certified survey, Liber 2478, Pages 764 and 765, referenced found pipe 1980 survey

SURVEY & REMONUMENTATION

MAY 31 2000

SECTION

B. Description of corner evidence found and/or method applied in restoring or reestablishing corner:

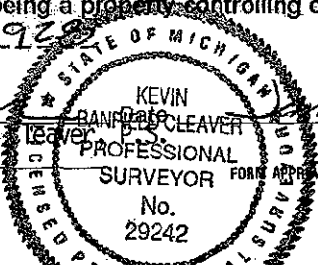
Found 1" pipe in gravel; this corner has been double monumented; the most commonly used corner is the 'T' iron in the monument box with the 1" pipe being the least referenced; however, the pipe appears to be the oldest corner from the historical records. The location of the 'T' iron first appears in the certified survey recorded in Liber 1828, Page 71, dated 1972. We contacted the firm setting the 'T' iron from the method used to establish this corner. The information received the 1972 survey attempted to reproduce the 1954 Consumers Power Company survey by using the angle from the east and west line of Section 8; they then produced the north and south 1/4 line fence of Section 17, north to the intersection of the south line of Section 8 based on Consumers Power Company survey. The pipe was found in a 1980 survey by Rowe Engineering, Inc. The additional evidence provided by Rowe Engineering, Inc., indicated the pipe to represent the correct corner and was ratified by the Genesee County Peer Review Committee on December 5, 1995, as the accepted corner.

C. Description of monument for corner and accessories established to perpetuate locating the position of the corner:

Set the standard Bernsten monument SS-A-5-BR-30 with 3 1/4" brass cap stamped Genesee County Re-monumentation Corner 1995, #29242 over a 1" pipe in gravel.

- S 10° W, 43.90' - Set 30d spike/re-monumentation tag in west face of power pole
- S 20° E, 45.00' - Found PK nail/tag #11192 in southwest face 10" cut off power pole
- S 25° W, 32.47' - Found PK nail/tag #11192 in west face of wood fence post
- S 42° W, 72.94' - Found PK nail/tag #22445 in northwest face of 6" Poplar Tree
- West, 1.70' - Found 'T' iron in monument box being a property controlling corner recorded in Liber 2601, Page 929

Signed by Kevin Banfield Cleaver  
Surveyor's Michigan License No. 29242



9, 1996

83