

REMONUMENTATION

APR 29 1996

COMMISSION

Notified by Peer Group in accordance with P.A. 345, 1990

Co. Rep. Kevin Banfield Cleaver
Date Jan 9, 1996

1995 Remonumentation Program
LAND CORNER RECORDATION CERTIFICATE
Filing Requirement of Act 74, Mich. P.A. 1970

DEED BOOK 2601 PAGE 925

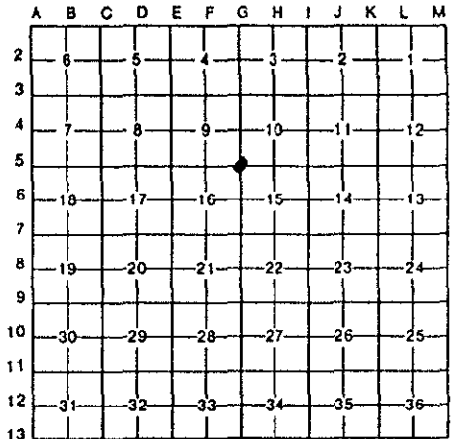
For corners in

Genesee (County)	Located In:	Corner Code #:
1. Public Land Survey	T <u>8N</u> R <u>6E</u>	<u>G-5</u>
	T _____ R _____	_____
	T _____ R _____	_____
	T _____ R _____	_____
2. Property Controlling in Section	S _____ T _____ R _____	_____
	S _____ T _____ R _____	_____
3. Miscellaneous Property in Sec.	S _____ T _____ R _____	_____
	S _____ T _____ R _____	_____

RECORDED
REGISTERED
GENESEE COUNTY REGISTER OF DEEDS
JAN 11 2 09 PM '96
Register of Deeds Stamp & File Number

4. Lot No. _____, Recorded Plat _____
5. Private Claims _____

I, Kevin B. Cleaver, P.S., in a field survey on September 15, 19 95, do hereby certify that under requirements of P.A. 74, Michigan P.A. of 1970, the corner points mentioned in lines 1 and 2 above were in conformance with regulations and rules therefore as required in the current manual of survey instructions of the United States Department of the Interior, Bureau of Land Management or by a decree of a Court of Law and/or that the corner points mentioned in lines 3, 4 and 5 above were in conformance with the rules of the Michigan Board of Land Surveyors or by a Decree of a Court of Law; established, re-established, monumented, re-monumented, recovered, found as expressed below:



NOTE: Not more than 4 corners, all in the same town and range, may be recorded on this certificate.

A. Description of original monument and accessories and/or subsequent restoration:

1821± Date(?), GEI records 1915, GCRC 1957, GEI records	Set post with two (2) accessories iron, with Five (5) accessories Project A-8164 distance F-5, G-5 Pipe, with one (1) accessory from date(?) GEI and one (1) new accessory	1979 1979	Certified survey, L 2045, P 259, found 1-inch pipe in monument box, with one (1) accessory from 1975 LCRC and three (3) new accessories Certified survey, L 2072, P 335 and 336, found 1-inch pipe, with PK nail in center in monument box, with four (4) accessories from 1979 certified survey, L 2045, P 529 and one (1) new accessory
1964, GEI records 1975, LCRC	Monument box, with two (2) accessories from date(?) GEI and one (1) new accessory L 1926, P 481, found 1-inch pipe in monument box, with three (3) new accessories	1986	Certified survey, L 2292, P 653 and 654, found pipe in monument box, with two (2) accessories from 1975 survey and one (1) accessory from 1979 certified survey, L 2045, P 529 and one (1) accessory from 1979 certified survey, L 2072, P 335 and 336

B. Description of corner evidence found and/or method applied in restoring or reestablishing corner:

Found cap #20709 inside 1-inch pipe in monument box at center line of pavement. Found distance F-5, G-5 from 1915 GCRC project; found 1-inch pipe iron in monument box and two (2) accessories from 1975 LCRC; found 1-inch iron pipe in monument box and four (4) accessories from 1979 certified survey, L 2045, P 529; found 1-inch pipe in monument box and five (5) accessories from 1979 certified survey, L 2072, P 335 and 336; found pipe in monument box and three (3) accessories from 1986 certified survey.

The monument found was ratified by the Peer Review Committee on November 1, 1995, as the accepted corner.

C. Description of monument for corner and accessories established to perpetuate locating the position of the corner:

Set the standard Bernsten monument SS-A-5-BR-30, with 3 1/4" brass cap stamped Genesee County Re-monumentation Corner 1995, #29242 over a 1-inch pipe in a monument box.

- N 65° E, 61.68' - Set spike/re-monumentation tag in southeast face of 4" Elm Tree
- S 40° E, 53.95' - Found PK nail/flagging in southwest face of power pole
- S 45° W, 61.32' - Set spike/re-monumentation tag in northwest face of power pole
- N 60° W, 66.50' - Found top Center of hydrant

Signed by Kevin Banfield Cleaver
Surveyor's Michigan License No. 29242

By: Kevin Banfield Cleaver, P.S.
Its Field Manager

