

attified by Peer Group in
conformance with P.A. 345, 1990

1996 REMONUMENTATION PROGRAM

Rep. Carl Carlson
date 12-17-96

LAND CORNER RECORDATION CERTIFICATE

Filing Requirement of Act 74, Mich. P.A. 1970

Dec 30 2 29 PM '96

RECORDED
REGISTERED

SURVEY &
REMONUMENTATION
MAY 20 1997
COMMISSION
83642
Register of Deeds Stamp & File Number

15-00
filed
for

For corners in

Genesee (County)	Located In:	Corner Code #
1. Public Land Survey	T 8N R 7E A-7	
	T R	
	T R	
	T R	
2. Property Controlling In Section	S T R	
	S T R	
3. Miscellaneous Property in Sec.	S T R	
	S T R	

4. Lot No. _____, Recorded Plat _____
5. Private Claims _____

I, Jack N. Owens, P.S., in a field survey on December 12, 19 96, do hereby certify that under requirements of P.A. 74, Michigan P.A. of 1970, the corner points mentioned in lines 1 and 2 above were in conformance with regulations and rules therefore as required in the current manual of survey instructions of the United States Department of the Interior, Bureau of Land Management or by a decree of a Court of Law and/or that the corner points mentioned in lines 3, 4 and 5 above were in conformance with the rules of the Michigan Board of Land Surveyors or by a Decree of a Court of Law; established, re-established, monumented, re-monumented, recovered, found as expressed below:

NOTE: Not more than 4 corners, all in the same town and range, may be recorded on this certificate.

	A	B	C	D	E	F	G	H	I	J	K	L	M
1													
2	6	5	4	3	2	1							
3													
4	7	8	9	10	11	12							
5													
6	18	17	16	15	14	13							
7													
8	19	20	21	22	23	24							
9													
10	30	29	28	27	26	25							
11													
12	31	32	33	34	35	36							
13													

A. Description of original monument and accessories and/or subsequent restoration:

1821, GLO - Notes, Horatio Ball, DS; set post measured between Cors B-7 & A-7, and 2 accessories.
1850, ROD - Map of Saginaw Plank Rd, L15, P426, A. Alberti, Surveyor; No corners shown. Called "Saginaw-Genesee Plank Rd."
1911, GCRC - N. Saginaw Road, Plan 798, Geo A. Meade, Co. Surveyor; shows corner, not describe monumentation, no accessories; called Cor A-7 but actually Cor M-7, T8N-R6E; shows W. line Sec = 5'E, of C/L. Saginaw; shows Cor M-7 too far South; shows Cor A-5 also but actually Cor M-5; gives distance M-5 to M-7; Coldwater Road pavement straight across Saginaw, no jog.
1919, ROD - Plat of Grand Boulevard, PL8, P6, Pius Pastorino, RLS 603; show corner as "NW Cor, Sec 19" [A-7], but actually Cor M-7.
(Cont'd on back)

B. Description of corner evidence found and/or method applied in restoring or reestablishing corner:

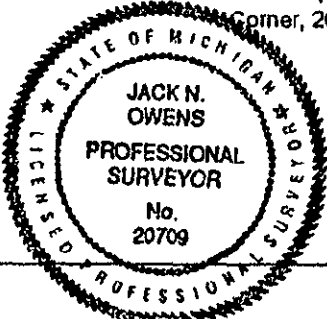
Did not find position for corner preserved by any monumentation. Re-established corner position at the GLO closing or "jog" distance South of the Standard Cor. M-7 on the W. line of the plat of Grand Boulevard using the record angle (of 91°00" in the SE quadrant of the intersection) since the Standard Cor. M-10 is not shown on any plat and no record for it exists. Assumed the plat Surveyor had some knowledge of location of line.

The GLO Notes state the Closing Cors. A-3, A-5, A-7 and A-9 are north of the Standard Cors. M-3, M-5, M-7 and M-9 on the W. line of T8N-R7E. The Closing Cor A-3 was re-established in the 1994 Genesee County Remonumentation Program and was shown to have been south (recorded as such as far back as an 1867 plat in Mt. Morris, "Plat of Dover") and that the GLO record erred in stating the direction. The records for Cor. A-4 show it has always been south. I conclude, therefore, that Cor. A-4 was established by the proper procedure of the mean or midpoint of the distance from Cor. A-3 to A-5 when both positions were known, probably by a County Surveyor no longer in office as have many corners. Various records show they continued to practice in the area but they did not have to record corners when not in office. It was most likely long before the County Surveyor recovered it in 1911. The County Surveyor records for Sec. 6, done in 1870, show they had detailed knowledge of such procedures well over 100 years ago. The distance from A-3 to A-4 was doubled over to re-establish the position for Cor. A-5 which I conclude showed the Deputy Surveyor measured one "half" chain longer than he stated for the distance south
(Cont'd on back)

C. Description of monument for corner and accessories established to perpetuate locating the position of the corner:

N00°36'56"E 42.90' Set PK nail at Cor M-7, T8N-R6E (reset from LCRC L. 2294, P. 310)
North 2659.49' Cor A-6, T8N-R7E
North 2712.09' Fnd 1/2 rered in mon box Cor M-6, T8N-R6E
N18°E 125.10' Top center hydrant
S63°E 42.47' Fnd GE wit tag NE face P. Pole
S72°W 48.46' Fnd GE wit tag face P. Pole
N37°W 103.99' Top center hydrant

Ratified by Genesee County Peer Group Dec. 17, 1996.
I cut a hole in the pavement and place a mon box.
I set the Standard Barnsen Monument SS-A-5 BR 3-1/4" Brass cap (stamped "Genesee County Remonumentation Corner, 20709, 1996") on a 18" X 5/8" rered



Signed by Jack N. Owens
Surveyor's Michigan License No. 20709

Date 12-27-96

REGISTER OF DEEDS } ss.
GENESEE COUNTY, MICHIGAN }

I DO HEREBY CERTIFY, That the within and foregoing, is a true copy of the
Record of a LAND CORNER
as recorded on Page 263-265A of
Liber 3437 of MASTER LIBER in the
Office of Register of Deeds of Genesee County, Michigan. That I have
compared the same with the said Record and the same is a true copy.

SURVEY &
REMONUMENTATION

MAY 20 1997

COMMISSION

[Signature]
DEPUTY Register of Deeds for Genesee County
Flint, Michigan 48502

12-30-96

Issued.....

PPGC 1103

A. Continued

- Plat part of N 1/2, Sec 19. "Sec Line" is actually a line from Stand Cor M-7 to Cor B-7 in next township.
- 1920, ROD - Plat of Elm Crest, PL9, P11, Pius Pastorino, RLS 603; not show corner but gives distance C/L Alfred Rd. (B-7) to "SW Cor Sec 18" (A-7), but actually Cor M-7. Plat part of SW 1/4, Sec 18. Not call C/L Alfred 1/4 line and "Sec line" not really Sec lines as above.
- 1928, ROD - Plat of Nothwood, PL16, P9, G.W. Frances, CE; shows "NE Cor, Sec 24, T8N-R6E" [Cor M-7]. Plat part of NE 1/4, Sec 18.
- 1930, MDOT - MDSH plans of Saginaw-Flint Rd (US-23); shows cor, not describe, no accessories; identiffc corners in Northwood; shows Coldwater Road straight across with not jog; shows Cor 5' E of C/L Saginaw but their C/L survey P.1. & offset date of plats produces calculation = 3.02' E.
- 1930, GCRC - Coldwater Road Plan 1148; Iron pin called Cor A-7, but actually M-7, no accessories; distance to Cor B-7 is in correct location for B-7.
- 1955, GCRC - Coldwater Road Plan 1342; no describe monumentation, no accessories; shows Cor as A-7 but actually M-7; distance to Cor B-7 is to another incorrect location for B-7.
- 1987, ROD - LCRC, L2294, P310, ALTA Survey of Volume Shoe in Sec 18, Jack N. Owens, RLS 20209. Fnd PK/brass tag (Gould Engr had reset corner from plat of Northwood but called it A-7); accessories; stated corner not actually Cor A-7 and need for remonumentation program to evaluate corners along Saginaw.

B. Continued

of Standard Cor. M-5, just as he did at Closing Cor. A-3. Horatio Ball, D.S., fairly commonly made 1/2 and full chain (actually miscounts of how many half-chain incremental measurements in a full measurement of any particular distance) in his measurements, as seen in several distances in both Secs. 7 and 18. Also, it is interesting to note that Geo. Meade listed himself as County Surveyor, Highway Engineer and Superintendent on the 1911 plans. He definitely knew where to look for sections corners and what type of monumentation as well, as County Surveyor. Meade is known to have been County Surveyor starting in 1897, replacing Moses Middleton who became Register of Deeds. Do not know how long he held the office other than signing th 1911 survey as County Surveyor.

We traversed around Sec. 18 in a retracement survey as part of our Romonumentation procedures. This clearly indicated the recovered monumented corners along the township line are the Standard Corners. It is obvious that Joseph Wampler, D.S. for the township boundaries, also made half chain-errors between Cors. M-5 to M-6 to M-7. Our EDM distance M-5 to M-6 is 2668.94' (40.44 ch.), MDSH measured 2667.0' in 1930, and the 1916 Long Acre plat 2669.7', all clearly showing a half-chain error in the GLO record. Likewise, our EDM distance M-6 to M-7 is 2669.19' (40.44 ch.) and MDSH measured 2666.5'. The distances are nearly equal and the difference from the GLO record is in the unit of the original survey, a half chain, showing the corners are perpetuations of the original position. The 1930 MSHD plands showed the C/L of Saginaw 5' E. of the corner but using their 1930 construction survey stationing and offsets to plat corners produces a calculated distance of 3.02' W. We measured 7.38' W. Cor A-5 was much closer to the calculated distance and the variations seen here indicate they did not have Cor M-7 tied in as well.

It is also apparent that there was much confusion on the part of Geo. Meade and the MSHD as to where the Standard and Closing Corners were. Meade tried to show the Closing Corners north of the Standard Corners, per the GLO record. However, the evidence of Cor. A-3 and the attached sheets show Meade actually had the Standard Corners, not the Closing Corners as he assumed. The pattern of the Closing Corners being south seems to continue from the whole township line. Sheets 5 and 6 of the attached sketches, made from his records, again show a "jog" close to the GLO record distance at Carpenter Road, further supporting this conclusion. Stanley and Coldwater Roads had been run straight across Saginaw with no jog evident well before 1911. The west line of Genesee Township is the only one in the County where the "jogs" are not evident in the road alignments. I conclude that it is most likely because Saginaw Road had been in use since Flint was founded in the 1830's. The 1850 "map" shows it was a plank road which probably obliterated much evidence of the corners. Combined with the fact the "jogs" were the opposite of the record, the closing corners evidently were obliterated and when cross roads were finally built, they simply went straight ignoring the "jog." Some evidence was available since Closing Cors. A-3 and A-5 were used in the plats and to establish A-4, a corner not set in the GLO Survey. Perhaps that evidence was due to the County Surveyor doing a survey in 1870 when he could still recover evidence of the GLO corners. US-23 construction in 1930 wiped out any evidence left. The preponderance of evidence, some collateral evidence still existing, supports the conclusions.

I conclude that the position described above for the corner at the GLO record distance south of the Standard Cor. M-7, T8N-R6E, be accepted as a careful and faithful re-establishment of the position of the original corner, which is obliterated, not lost. Based upon the plats and ownership in Secs. 18 and 19, it doesn't seem this corner would control surveys for any parcels, but the position seems reasonable based upon the collateral evidence of the other corners cited.

SURVEY &
REMONUMENTATION

MAY 20 1997

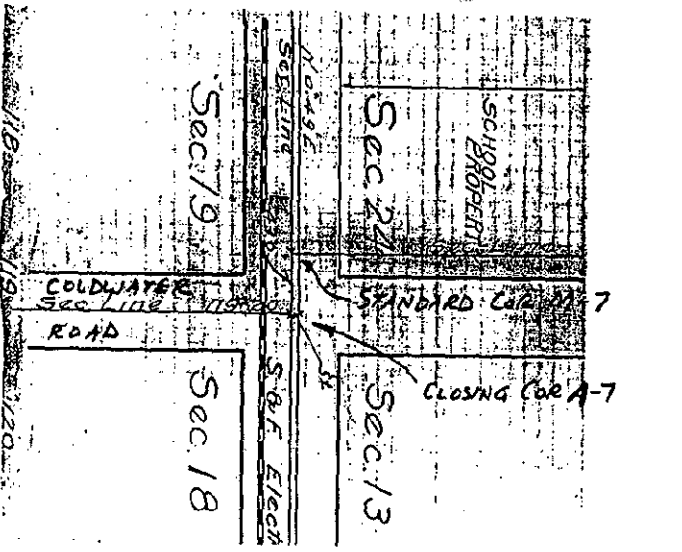
COMMISSION

MISTH
LIBER 3437 PAGE 265

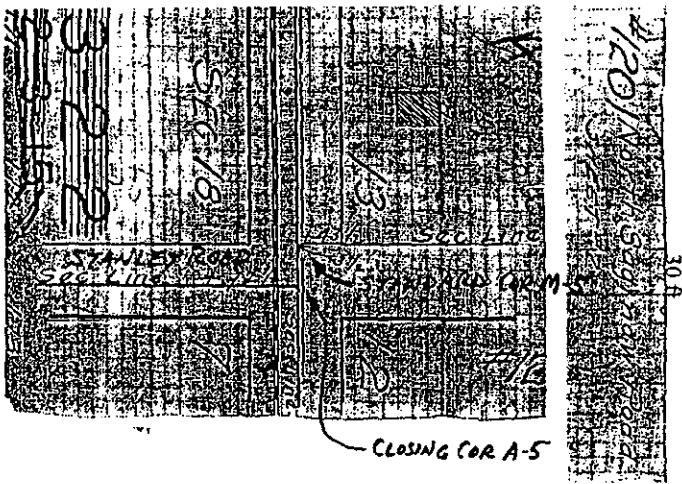
Cor A-7, T8N-R7E

From
G.C.R.C. Records
North Saginaw Road - Plan 799

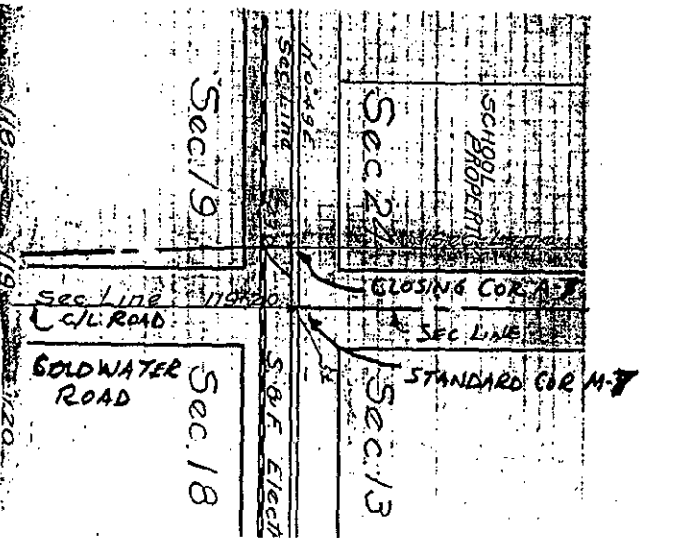
Relationship between Standard and Closing corners M-5 and A-5 at Stanley and M-7 and A-7 at Coldwater Road as they cross Saginaw (Mt. Morris/Genesee Township Line), as assumed by County Surveyor in 1911. He was trying to reconcile road alignment with no jog to GLO Notes and Plat that showed the closing corner North of the standard corner.



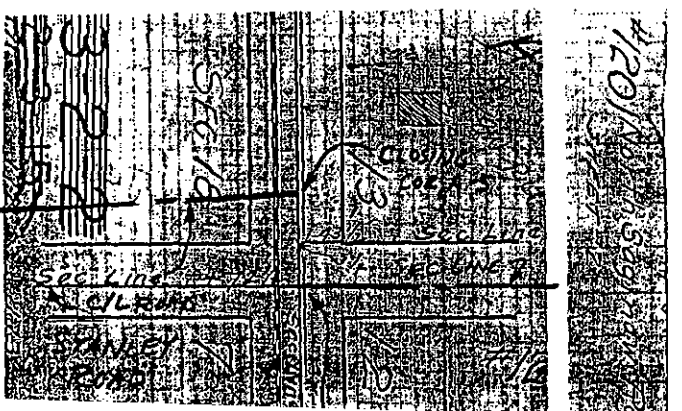
GLO "jog" = 65 links (42.90 ft)
Plan = 43 feet



GLO "jog" = 44 links (29.04 ft)
Plan = Sta 172 + 73 1/2
Sta 172 + 43 1/4



GLO "jog" = 65 links (42.90 ft)



GLO "jog" = 44 links (29.04 ft)
GLO Corrected = 94 links (62.04 ft)

MAY 20 1997

COMMISSION

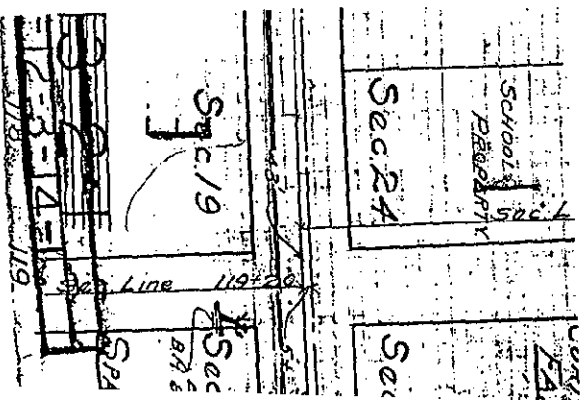
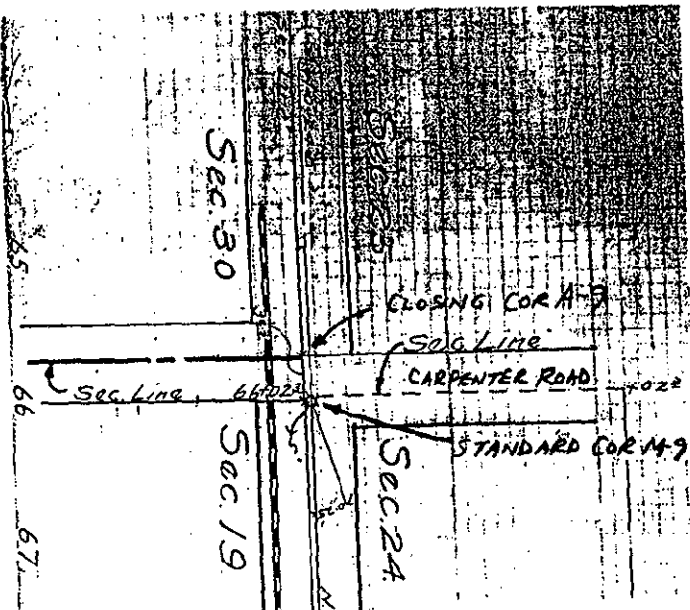
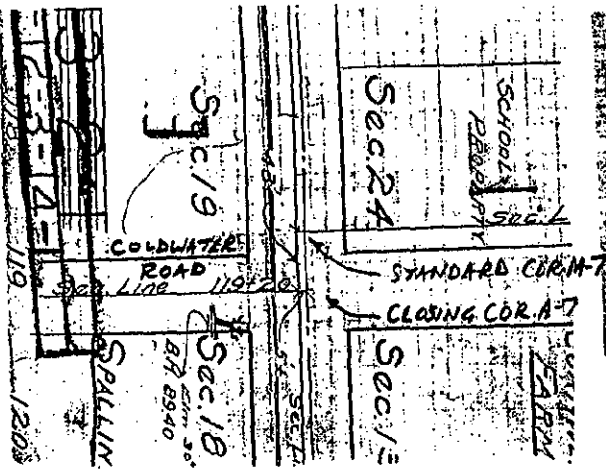
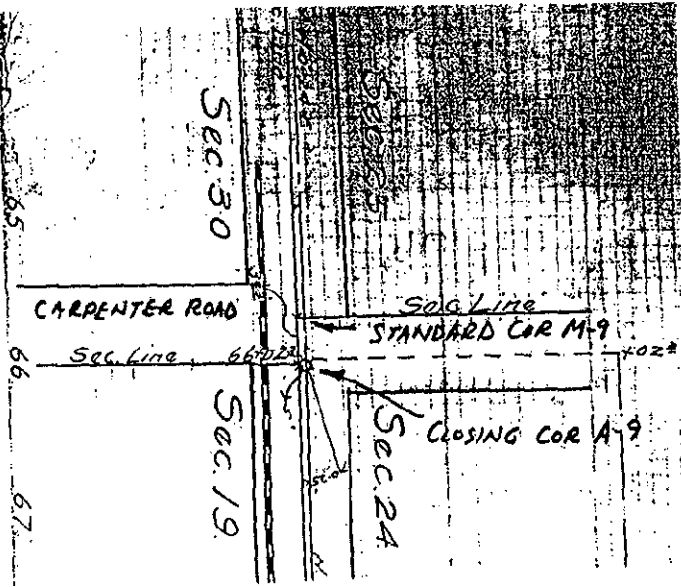
From
G.C.R.C. Records
North Saginaw Road - Plan 798

Relationship between Standard and Closing corners M-7 and A-7 at Coldwater Road and M-9 and A-9 at Carpenter Road as they cross Saginaw Road (Mt. Morris/Genesee Township Line), as assumed by County Surveyor in 1911. He was trying to reconcile road alignment with jog to South to GLO Notes and Plat that showed the closing corner North of the standard corner.

Surveyed March 13th & 14th, 1911.
By Geo. A. Woods Eng'r & Supt.

GLO "Jog" = 47 links (31.02 ft)
Plan = 31.3 ft

GLO "Jog" = 65 links (42.90 ft)
Plan = 43 ft



DWG. NO. 798
SHEET NO. 1 OF 2

DWG. NO. 798
SHEET NO. 1 OF 2

Relationship between Standard and Closing Corners M-9 and A-9 at Carpenter Road at Saginaw Road based upon collateral evidence of 1/4 Corner A-4 and Closing Corner A-3 both being South of the Standard Corners. Corner A-3 also has road being South. At Carpenter Road have the same collateral evidence of the road being South as well as nearly the same identical to the GLO "jog" distance but in opposite

Surveyed March 13th & 14th, 1911.
By Geo. A. Woods Eng'r & Supt.

GLO "Jog" = 65 links (42.90 ft)
Plan # 31.3 ft (47 links)