

MAY 31 2000

LAND CORNER RECORDATION CERTIFICATE

DEED LIBER 2522 PAGE 98

SECTION

Filing Requirement of Act 74, Mich. P.A. 1970

(Remonumentation corner under P. A. 345, Michigan P. A. of 1990)

For corners in Genesee (County)

Located In: Genesee Twp

Corner Code # E-3

- 1. Public Land Survey T 8N R 7E E-3
2. Property Controlling in Section S T R
3. Miscellaneous Property in Sec. S T R
4. Lot No. Recorded Plat
5. Private Claims

RECORDED REGISTERED JAN 6 8 43 AM '94 GENESSEE COUNTY FLINT MICHIGAN Register of Deeds Stamp & File Number

FILED & RECORDED #9

I, Jack N. Owens, Prof. Surveyor, in a field survey on August 20 19 93, do hereby certify that under requirements of P.A. 74, Michigan P.A. of 1970, the corner points mentioned in lines 1 and 2 above were in conformance with regulations and rules therefore as required in the current manual of survey instructions of the United States Department of the Interior, Bureau of Land Management or by a decree of a Court of Law and/or that the corner points mentioned in lines 3, 4 and 5 above were in conformance with the rules of the Michigan Board of Land Surveyors or by a Decree of a Court of Law; established, re-established, monumented, re-monumented, recovered, found as expressed below:

NOTE: Not more than 4 corners, all in the same town and range, may be recorded on this certificate.

A. Description of original monument and accessories and/or subsequent restoration:

1821, GLO - H. Ball, D. S. set post & accessories 1913, 1927/28, GCRC-Mt. Morris Rd. Plans & Wit. book

C.H. Carlson, PS9189, end boat spk in mon. box (list 2 1927 acc. = bldg. cors., and 10 new accessories)

G.H. McVannell, Co. Hwy. Engr. (1913) stone & iron pin in 1912; iron & 9 accessories (1927/28) 1966, Con. Pow. Co., Sec. 4. Set nail [from 1927 acc.=stone] list 2 1927 acc. & 1 new one. LCRC = L1975, P504 (1972) = fnd 1" rerod; L2034, P413 (1979) = set PK nail from West Engr. 1960 survey; Cert. Sur. = L2005, P921 (1978) = set PK nail; L2102 P655 (1980) - fnd 1/2" rerod in mon box, all by JSFokens, PS21567; REI Sur. records (1986), JN Owens, PS20709. Fnd rerod in mon box; Cert. Sur., unrecorded (1989),

B. Description of corner evidence found and/or method applied in restoring or reestablishing corner:

1993, Gen. Co. Remon. Program Recovered 1/2" rod in Mon box & 7 accessories [rerod to NW near CB (1985), spk in p. pole to NE (1978) & 5 other unrecorded accessories] Dist to D-3 = 2669.79' (40.451 ch.) EDM [cf = 2671.05' by GCRC in 1927/28, 2663' by GCRC in 1913, 39.94 ch. (2636') by GLO in 1822, GLO corrected = 40.44 ch. (2669')] Dist. to F-3 = 2643.47' (40.053 ch.) EDM [cf = 2633.2' by GCRC in 1927/28, 2639' by GCRC in 1912, 40.06 ch. (2644') by GLO in 1822)]. Angle to N = 180 deg 39'58" [cf = 180 deg 37' in 1927/28]

The stone recovered in 1912 with iron pin added and iron set in 1927/28 along with the distances being nearly the same show it has long been perpetuated. It was re-established with 1927 accessories in 1966. As with other corners along Mt. Morris Rd. it shows a pattern of recovery by the GCRC followed by perpetuation by a new monument & the 1927/28 paving being centered on the Sec. line making it a good accessory. I accept the 1/2" rerod in the mon. box as a faithful and careful re-establishment of the position of the original corner.

Ratified by Gen. Co. Peer Group Dec. 29, 1993

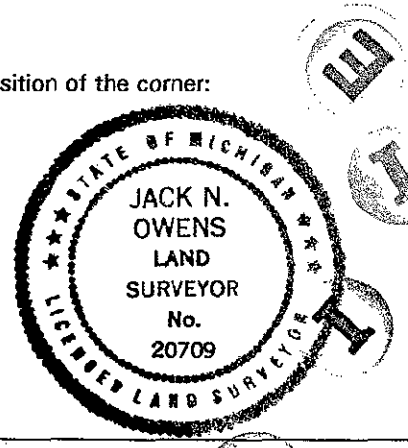
C. Description of monument for corner and accessories established to perpetuate locating the position of the corner:

Accessories: N45W 58.21' Fnd 1/2" rod 8' off CB & 1' off asph. parking lot (1986 acc.) N45E 55.54' Fnd spike/flag SE fc. P. pole (1978 acc.) & 55.56' set PK/GCRemon tag SE fc. & 55.45' Fnd nail/Delta tag SW fc. S45E 65.20' Fnd spike/flag E. fc. T. pole & 65.11' Set PK/GCRemon tag E. fc. S48W 55.86' Fnd spk/flag NW fc. W'ly p. pole & 55.98' Set PK/GCRemon tag NW fc. S45W 54.59' Fnd nail/Delta tag NE fc. p. pole & 55.14' Fnd double headed nail/disk NW fc.

I set the standard Berntsen monument SS-A-5-BR-30 (3 1/4" d. brass cap stamped "Genesee County Remonumentation Corner, 20709, 1993" with 24" x 2 3/8" O.D. stainless steel tube) over rod in mon. box.

Signed by Jack N. Owens Surveyor's Michigan License No. 20709

Date 12-30-93



45