

**SURVEY & REMONUMENTATION**

MAY 31 2000

**LAND CORNER RECORDATION CERTIFICATE**

Filing Requirement of Act 74, Mich. P.A. 1970

DEED LIBER 2522 PAGE 99

**SECTION**

(Remonumentation corner under P. A. 345, Michigan P.A. of 1990)

For corners in

Genesee  
(County)

Located In:

*Genesee Twp*

Corner Code #

- |                                    |      |      |     |
|------------------------------------|------|------|-----|
| 1. Public Land Survey              | T 8N | R 7E | F-3 |
|                                    | T    | R    |     |
|                                    | T    | R    |     |
|                                    | T    | R    |     |
| 2. Property Controlling in Section | S    | T    | R   |
|                                    | S    | T    | R   |
| 3. Miscellaneous Property in Sec.  | S    | T    | R   |
|                                    | S    | T    | R   |
4. Lot No. \_\_\_\_\_, Recorded Plat \_\_\_\_\_
5. Private Claims \_\_\_\_\_

RECORDED  
REGISTERED  
JAN 6 8 43 AM '94  
GENESEE COUNTY  
FLINT MICHIGAN  
Register of Deeds Stamp & File Number

FILED & RECORDED

	A	B	C	D	E	F	G	H	I	J	K	L	M
1													
2	6	5	4	3	2	1							
3													
4	7	8	9	10	11	12							
5													
6	18	17	16	15	14	13							
7													
8	19	20	21	22	23	24							
9													
10	30	29	28	27	26	25							
11													
12	31	32	33	34	35	36							
13													

I, Jack N. Owens, Prof. Surveyor, in a field survey on August 20 1993, do hereby certify that under requirements of P.A. 74, Michigan P.A. of 1970, the corner points mentioned in lines 1 and 2 above were in conformance with regulations and rules therefore as required in the current manual of survey instructions of the United States Department of the Interior, Bureau of Land Management or by a decree of a Court of Law and/or that the corner points mentioned in lines 3, 4 and 5 above were in conformance with the rules of the Michigan Board of Land Surveyors or by a Decree of a Court of Law, established, re-established, monumented, re-monumented, recovered, found as expressed below:

**NOTE: Not more than 4 corners, all in the same town and range, may be recorded on this certificate.**

**A. Description of original monument and accessories and/or subsequent restoration:**

1821, GLO, H. Ball, D.S. set post & 2 accessories  
1912, 1927/28, GCRC-Mt. Morris Rd Plans & Wit. Book  
Geo. A. Meade, Engr. (1913). Stone in 1912 & iron  
pin in 1927/28 with 3 accessories shows distances  
btwn. corners 1966, Con. Pow. Co., Sec. 4; Set spike  
(from 1927 acc. = tower legs) (1966) lists 2 1927  
accessories & 1 new one; Cert. Sur. L2102, P655 (1980)  
& LCRC L2129, P416 (1982) = JSFokens, PS21567; Cert. Sur.,  
unrecorded (1989) = CHCarlson, PS 9189. These two Cert.  
Surs. & LCRC stated fnd 1/2" rerod in mon. box (1980,  
1982, 1983). List 2 1927 acc. (tower legs) & 3 new ones.

**B. Description of corner evidence found and/or method applied in restoring or reestablishing corner:**

1993 Gen. Co. Remon Program  
Recovered 1/2" rerod in mon. box & 3 accessories  
[SE tower leg to E, bolt on SW tower leg to NE  
& recorded nail in Maple to SE]  
Dist to E-3 = 2643.47' (40.053 ch) EDM [cf =  
2633.2' by GCRC in 1927/28, 2639' by GCRC in 1912,  
40.06 ch (2644') by GLO in 1822]  
Dist to G-3 = 2690.11' (40.759 ch) EDM [cf =  
2692.8' by GCRC in 1927/28, 2694' by GCRC in 1912,  
40.06 ch (2644') by GLO in 1822 corrected to 40.56  
ch (2677')]  
Total mile = 5333.58' (80.812 ch) EDM [cf =  
5326.0' in 1927/28, 5333' in 1912, 80.12 ch  
5288') GLO in 1822, corrected to 80.62 ch (5321')]  
The stone (1912) and iron pin (1927/280 show how  
long perpetuation.

C/L being good accessory. I conclude Dep. Sur. made 1/2 ch.  
error in measuring E 1/2 mile. Dividing the EDM measurement by  
the GLO corrected record gives 66.3 ft/ch. for Dep. Sur. chain,  
a logical value VS 67.2 ft/ch. for the actual GLO record, not  
a logical value. The proportionate position, using the  
corrected GLO record, is only 10 links (6.6') different whereas  
the actual GLO record distance gives a position 35 links  
(22.3') away. This supports the recovered position as the true  
perpetuated position. I accept the 1/2" rerod in the mon. box  
as a faithful and careful perpetuation of the position of  
original corner.

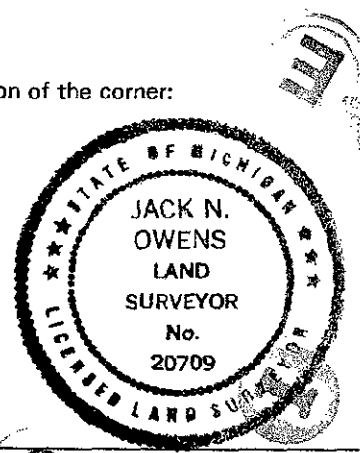
Ratified by Gen. Co. Peer Group Dec. 27, 1993

Distance match historical record to 1912. As with  
other corners on Mt. Morris Rd., cor. shows pattern  
of recovery & perpetuation by GCRC along with pvmt.

**C. Description of monument for corner and accessories established to perpetuate locating the position of the corner:**

Accessories:  
N05E 35.91' Cntr. W. bolt SW leg elec. trans.  
tower 7' + above grd. (1927 & 1980 acc.)  
NE 41.06' SE leg ele. trans. tower (1927 acc.)  
S50W 55.02' set spk/GCRemon tag SE fc. 18"  
Walnut (1980 acc. tree)  
S40E 64.16' fnd nail/flag W fc. trip 15" Maple  
& 64.30' set spk/GCRemon tag W fc.  
(1980 acc tree)  
North 60.12' set PK/GCRemon tag E. fc. p. pole

I set the standard Berntsen  
monument SS-A-5-BR-30 (3 1/4"  
d. brass cap stamped "Genesee  
County Remonumentation Corner,  
20709, 1993" with 24" x 2 3/8"  
O.D. stainless steel tube) over  
rod in mon. box.



Signed by *Jack N. Owens*

Date 12-30-93

Surveyor's Michigan License No. 20709

46