

SURVEY & REMONUMENTATION

MAY 31 2000

LAND CORNER RECORDATION CERTIFICATE
Filing Requirement of Act 74, Mich. P.A. 1970

DEED LIBER 2522 PAGE 100

SECTION

(Remonumentation corner under P.A. 345, Michigan P.A. of 1990)

For corners in

Genesee
(County)

Located In:

Genesee Twp

Corner Code #

1. Public Land Survey	T	8N	R	7E	G-3
	T		R		
	T		R		
	T		R		
2. Property Controlling in Section	S	T	R		
	S	T	R		
3. Miscellaneous Property in Sec.	S	T	R		
	S	T	R		
4. Lot No. _____, Recorded Plat _____					
5. Private Claims _____					

RECORDED
REGISTERED
JUN 6 8 43 AM '94
GENESEE COUNTY
FLINT MICHIGAN

Register of Deeds Stamp & File Number

FILED & RECORDED

1	A	B	C	D	E	F	G	H	I	J	K	L	M
2	6	5	4	3	2	1							
3													
4	7	8	9	10	11	12							
5													
6	18	17	16	15	14	13							
7													
8	19	20	21	22	23	24							
9													
10	30	29	28	27	26	25							
11													
12	31	32	33	34	35	36							
13													

I, Jack N. Owens, Prof. Surveyor, in a field survey on November 18 19 93, do hereby certify that under requirements of P.A. 74, Michigan P.A. of 1970, the corner points mentioned in lines 1 and 2 above were in conformance with regulations and rules therefore as required in the current manual of survey instructions of the United States Department of the Interior, Bureau of Land Management or by a decree of a Court of Law and/or that the corner points mentioned in lines 3, 4 and 5 above were in conformance with the rules of the Michigan Board of Land Surveyors or by a Decree of a Court of Law; established, re-established, monumented, re-monumented, recovered, found as expressed below:

NOTE: Not more than 4 corners, all in the same town and range, may be recorded on this certificate.

A. Description of original monument and accessories and/or subsequent restoration:

1821, GLO, H. Ball, D.S. set post & 2 accessories
1912, 1919, 1927/28, GCRC-Nt. Morris & Center Rd.
Plans. & Wit. Book. G.A. Meade & O. Branch, Engrs.
Stone (1912), stone & iron (1919), iron pin
1927/28, lists 3 accessories used twice. Show
distances between sec. corners

1966 Con. Pow. Co. Sur. Recs., Sec. 4. Set spike [using 1927
BM acc.], lists 1927 accessory & 4 new ones.

B. Description of corner evidence found and/or method applied in restoring or reestablishing corner:

1993 Gen. Co. Remon Program
Recovered 3/4" rerod in mon. box & 4 accessories
[1966 p. poles to SW & NE, & 2 unrecorded ones]
Dist to F-3 = 2690.11' (40.759 ch) EDM [cf =
2692.8' GCRC 1927/28, 2694' GCRC 1912, 40.06 ch
(2644') GLO 1822 but corrected to 40.56 ch (2677')
Dist to H-3 = 2641.41' (40.021 ch) EDM [cf =
2639.97' GCRC 1927/28, 2641' GCRC 1912, 39.89 ch
(2633') GLO 1822]
Angle to N = 176 deg 55' 53" [cf=176 deg 56' 1927/28]

The stone recovered in 1912 with pin added and iron pin set in
1927/28 show long perpetuation and the distances match
historical record to 1912. As with other corners on Mt. Morris
Rd. cor. shows pattern of recovery & perpetuation by GCRC along
with pvmt C/L being good accessory. I conclude Dep. Sur. made
1/2 ch. error in W 1/2 mile. I accept the 3/4" rerod in the
mon. box as a faithful and careful perpetuation of the position
of the original corner.

Ratified by Gen. Co. Peer Group Dec. 29, 1993

C. Description of monument for corner and accessories established to perpetuate locating the position of the corner:

Accessories:

S55E, 62.52' Fnd nail/tag NW fc. p. pole
S55W, 59.37' Fnd nail/tag top out off p.
pole (1966 acc.)
& 59.75' Set PK/GCRemon tag NNW fc.
N40E, 83.95' Fnd nail/tag SW fc. p. pole
(same pole as 1966 acc.)
S35E, 67.20' Fnd nail/flag SW fc. wood post
& 67.06' Set PK/GCRemon tag SW fc.

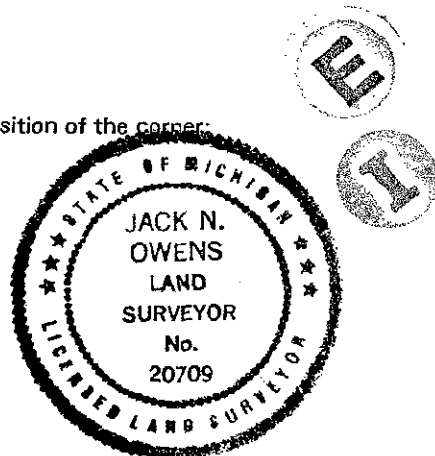
I set the standard Berntsen
monument SS-A-5-BR-30 (3 1/4"
d. brass cap stamped "Genesee
County Remonumentation Corner,
20709, 1993" with 24" x 2 3/8"
O.D. stainless steel tube) over
rod in mon. box.

1071

Signed by *Jack N. Owens*

Date Dec 30, 1993

Surveyor's Michigan License No. 20709



47

