

Ratified by Peer Group in accordance with P.A. 345, 1990 1996 REMONUMENTATION PROGRAM Co. Rep. [Signature] LAND CORNER RECORDATION CERTIFICATE Date 10-23-96 Filing Requirement of Act 74, Mich. P.A. 1970

COMMISSION

RECORDED
RECORDED
Dec 30 2 29 PM '96

GENESEE COUNTY
REGISTERED

For corners in

- Genesee (County) Located In: Corner Code #
1. Public Land Survey T 8N R 7E G-5
2. Property Controlling in Section S T R
3. Miscellaneous Property in Sec. S T R
4. Lot No. Recorded Plat
5. Private Claims

83652

Register of Deeds Stamp & File Number

[Handwritten signature]

I, Jack N. Owens, P.S., in a field survey on September 19, 1996, do hereby certify that under requirements of P.A. 74, Michigan P.A. of 1970, the corner points mentioned in lines 1 and 2 above were in conformance with regulations and rules therefore as required in the current manual of survey instructions of the United States Department of the Interior, Bureau of Land Management or by a decree of a Court of Law and/or that the corner points mentioned in lines 3, 4 and 5 above were in conformance with the rules of the Michigan Board of Land Surveyors or by a Decree of a Court of Law; established, re-established, monumented, re-monumented, recovered, found as expressed below:

NOTE: Not more than 4 corners, all in the same town and range, may be recorded on this certificate.

Grid with columns A-M and rows 1-13. Cell (5, F) contains a dot.

A. Description of original monument and accessories and/or subsequent restoration:

- 1821, GLO - H. Ball DS, set post, and 2 accessories.
1933, GCRC - Field notes & witnesses; not found placed stake, measured between G-4 and G-5 and F-5 and G-5, and 3 new accessories.
1951, Plat "Kurtz Acres" - L.23, P.23, by Richard C. West RLS #6100; no description of monument given, measured between corners G-4 and G-5, no accessories given.
1957, CPCo - Witnesses; wooden stake, set 1" x 24" solid iron, and 2 new accessories.
1954, Plat "Kurtz Acres No. 1" - L.25, P.33, by Richard C. West RLS #6100; no description of monument given, no accessories given.
(Cont'd on back)

B. Description of corner evidence found and/or method applied in restoring or reestablishing corner:

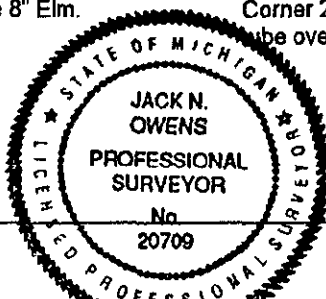
1996 Remon - Fnd 5/8" solid rod below 6" long 1/2" dia. rod 0.1'S & 0.1'W of 5/8" rod in center of monument box, and 3 accessories from 1982 (P/P to NE at 70.06', P/P to NW at 66.85', P/P to SW at 55.55'), and 2 accessories from 1994 (tag in P/P to NE at 69.50', edge pvmt to S at 8.30').

In 1933 the GCRC while performing a survey along Stanley Road could not find the monument at G-5. They somehow came up with a position for the corner and set a stake. After setting this stake the Road Commission surveyors measured between the corners G-4 and G-5, as well as referencing the corner to three (3) witnesses. In 1951 Richard C. West RLS #6100, recorded the plat of "Kurtz Acres" using the corner G-5. The 1/2 mile distance between G-4 and G-5 was measured and recorded on the plat of "Kurtz Acres" as 2642.81' (40.04 ch.). Sometime later in the 1950's CPCo surveyors reported finding a wooden stake and setting a 1" x 24" solid iron at the corner G-5. At that time CPCo noted three witnesses, two (2) of which were previously used by the GCRC in 1933. Seven (7) years later in 1958 CPCo again visited the corner G-5. This time they found a 1 1/2" solid iron monumenting the corner (sounds very similar to the 1" solid iron set previously by CPCo). They referenced the iron with three (3) witnesses, one (1) of which was still the same concrete post to the South as was used in 1933 by the GCRC. In 1972 John M. Budzick RLS #18982 while performing a survey found a monument box at G-5. On his survey he listed the three (3) witnesses taken by the GCRC in 1933. It appears that Mr. Budzick copied the witnesses from the GCRC witness book and did not actually note any new accessories. In 1982 Robert F. Jones LS #29248 while performing a field survey found a 1/2" iron at the centerline of Center Road at Stanley Road. We also recovered this 1/2" rod near the surface of the monument box, but upon further excavation found a 5/8" solid rod beneath the 1/2" rod which was 0.1'S & 0.1'W of (cont'd on back)

C. Description of monument for corner and accessories established to perpetuate locating the position of the corner:

- N40E 70.17' Set Pk & Genesee Co. tag in SE face P/P
N25W 66.93' Set Pk & Genesee Co. tag in NW face P/P
S45W 55.35' Set spike & Genesee Co. tag in NW face P/P
S45E 67.11' Set nail & Genesee Co. tag in NE face 8' Elm.
Ratified by Genesee County Peer Group October 23, 1996.
I set the Standard Berntsen Monument SS-A-5-BR-30 (3 1/4" D. Brass cap stamped "Genesee County Remonumentation Corner 20709, 1996") with a 30" x 2 3/8" O.D. stainless steel tube over the 5/8" rod in a monument box.

Signed by [Signature] Surveyor's Michigan License No. 20709



Date 12-26-96

REGISTER OF DEEDS }
GENESEE COUNTY, MICHIGAN } ss.

I DO HEREBY CERTIFY, That the within and foregoing, is a true copy of the
Record of a LAND CORNER
as recorded on Page 283-284
of Liber 3437 of MASTER LIBER in the
Office of Register of Deeds of Genesee County, Michigan. That I have
compared the same with the said Record and the same is a true copy.

[Signature]
DEPUTY Register of Deeds for Genesee County
Flint, Michigan 48502

Issued 12-30-96
PPGC 1103

A. Continued

- 1956, Plat "Brookview Subdivision" - L.29, P.35, by Richard C. West RLS #6100; no description of monument given, no accessories given.
- 1958, CPCo - Witnesses; 1 1/2" solid iron, and 2 new accessories
- 1968, Plats - "Brookview Subdivision No. 2" L.46, P.44, "Brookview Subdivision No. 3" L.46, P.45, both by Richard C. West, RLS #6100; no description of monument given, no accessories given.
- 1972, Cert. Survey - L.1816, Pgs.67-69, by John M. Budzick RLS #18982; mon box, and no new accessories.
- 1982, Cert. Surv. & LCRC - L.2145, Pgs. 14-15, by Robert F. Jones RLS #29248; fnd 1/2" iron C/L Center @ Stanley Road, and 4 new accessories.
- 1984, RC & Associates - Field notes & calculation sheet; fnd 1/2" rod in mon. box, measured between corners F-5 and G-5, and G-4 and G-5, and 3 new accessories.

B. Continued

the 5/8" rod which was in the center of the monument box. Mr. Jones noted four (4) new accessories and recorded an LCRC of the corner. During our field visit to the corner G-5 we recovered three (3) of Mr. Jones witnesses, all of which compare reasonably well to the 1/2" rod. In 1994 while performing a survey RC & Associates found a 1/2" rod in a monument box at G-5. They observed four (4) witnesses, three (3) of which we recovered. RC also measured between the corners F-5 and G-5, and G-4 and -5. The 1/2 mile F-5, G-5 measured 2641.43 (40.05 ch.) which differed by 11.43' from the 1933 measurement by the GCRC, but only differed by 0.62' (1 link) from the 1951 measurement by Richard C. West as it appears on the plat of "Kurtz Acres". No evidence as to how the 1/2" rod originated was recovered during our research of this corner. We do know that it was there in 1982 and that at least 2 surveys are tied to it. The 5/8" solid rod in the center of the monument box below the 1/2" rod sounds very similar to the 1" x 24" solid iron that CPCO set in the 1950's, and the 1 1/2" solid iron found by CPCO in 1958. I accept the position of the found 5/8" solid rod below 6" long 1/2" dia. rod 0.1S & 0.1W of 5/8" rod in the center of a monument box as a careful and faithful re-establishment position of the original corner.

SURVEY &
REMONUMENTATION

MAY 20 1997

COMMISSION

PPGC 1103