

SURVEY & REMONUMENTATION

MAY 31 2000

LAND CORNER RECORDATION CERTIFICATE

Filing Requirement of Act 74, Mich. P.A. 1970

DEED LIBER 2522 PAGE 101

SECTION

(Remonumentation corner under P.A. 345, Michigan P. A. of 1990)

For corners in

Genesee
(County)

Located In:

Genesee Twp

Corner Code #

1. Public Land Survey

T 8N R 7E

H-3

2. Property Controlling in Section

S T R

3. Miscellaneous Property in Sec.

S T R

4. Lot No. _____, Recorded Plat _____

5. Private Claims _____

RECORDED
REGISTERED
JAN 6 8 43 AM '94
GENESEE COUNTY
FLINT MICHIGAN
Register of Deeds Stamp & File Number

FILED & RECORDED

I, Jack N. Owens, Prof. Surveyor, in a field survey on November 18 19 93, do hereby certify that under requirements of P.A. 74, Michigan P.A. of 1970, the corner points mentioned in lines 1 and 2 above were in conformance with regulations and rules therefore as required in the current manual of survey instructions of the United States Department of the Interior, Bureau of Land Management or by a decree of a Court of Law and/or that the corner points mentioned in lines 3, 4 and 5 above were in conformance with the rules of the Michigan Board of Land Surveyors or by a Decree of a Court of Law; established, re-established, monumented, re-monumented, recovered, found as expressed below:

NOTE: Not more than 4 corners, all in the same town and range, may be recorded on this certificate.

A. Description of original monument and accessories and/or subsequent restoration:
1821, GLO-H. Ball, D.S. set post & 2 accessories
1912, 1927/28, GCRC-Mt. Morris Rd. Plan & Wit. Book
iron pin & 2 accessories, shows distances btwn. corners
1992, Cert. Sur. (unrecorded, H.H. Carlson, P89189
Fnd. 1/2" rebar in mon. box, lists 4 accessories

B. Description of corner evidence found and/or method applied in restoring or reestablishing corner:
1993 Gen. Co. Remon. Program
Recovered 1/2" rerod in mon box & 4 accessories from 1992
Dist to G-3 = 2641.41' (40.021 ch) EDM [cf = 2639.97' GCRC 1927/28, 2641' GCRC 1912, 39.89 ch (2633') GLO 1822]
Dist to I-3 = 2626.67' (39.798 ch) EDM [cf = 2629.3' GCRC 1927/28, 2627' GCRC 1912, 39.89 ch (2633') GLO 1822]
Total mile = 5268.07' (79.819 ch) EDM [cf = 5269.27' GCRC 1927/28, 5268' GCRC, 1912, 79.78 ch (5265') GLO 1822]
Angle to N = 178 deg 50'51" [cf = 178 deg 50' 1927/28 & 1912]

The pin set in 1927/28 was in line with the N-S 1/4 line fences. I conclude there was evidence of the cor. since they called it the 1/4 corner in 1912 & 1927/28. The distances match very closely to historical records back to the GLO. As with other corners in Mt. Morris Rd. cors. shows pattern of recovery & perpetuation by GCRC along with pvmt. C/L being good accessory. I accept the 1/2" rerod as in mon. box a faithful and careful perpetuation of the position of the original corner.

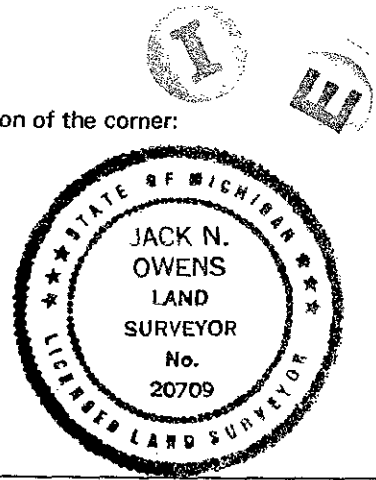
Ratified by Gen. Co. Peer Group Dec. 29, 1993

C. Description of monument for corner and accessories established to perpetuate locating the position of the corner:
Accessories: (fnd all 4 1992 accs.)
North 59.22' Fnd nail/Gould tag in P. pole
S50E, 45.44' Fnd nail/Gould tag in p. pole
N65E, 68.70' SW cor. top/curb in drive of hse #4273
S45W, 41.12' Fnd PK SE fc. 12" Hickory
& 40.96' Set nail/GCRemon tag SE fc.

I set the standard Berntsen monument SS-A-5-BR-30 (3 1/4" d. brass cap stamped "Genesee County Remonumentation Corner, 20709, 1993" with 24" x 2 3/8" O.D. stainless steel tube) over rod in mon. box.

Signed by Jack N. Owens
Surveyor's Michigan License No. 20709

Date 12-30-93



48