

SURVEY & REMONUMENTATION

MAY 29 1997

COMMISSION

MASTER LIBER 3437 PAGE 285

1996 REMONUMENTATION PROGRAM
LAND CORNER RECORDATION CERTIFICATE
Filing Requirement of Act 74, Mich. P.A. 1970

For corners in

Form with fields: Genesee (County), Located In, Corner Code #, 1. Public Land Survey, 2. Property Controlling in Section, 3. Miscellaneous Property in Sec., 4. Lot No., 5. Private Claims

Register of Deeds Stamp & File Number 83653. Includes vertical stamps: RECORDED, REGISTERED, GENESSEE COUNTY, and a date stamp: DEC 30 2 29 PM '96. Handwritten signature and initials are present.

I, Jack N. Owens, P.S., in a field survey on October 25, 1996, do hereby certify that under requirements of P.A. 74, Michigan P.A. of 1970, the corner points mentioned in lines 1 and 2 above were in conformance with regulations and rules therefore as required in the current manual of survey instructions of the United States Department of the Interior, Bureau of Land Management or by a decree of a Court of Law and/or that the corner points mentioned in lines 3, 4 and 5 above were in conformance with the rules of the Michigan Board of Land Surveyors or by a Decree of a Court of Law; established, re-established, monumented, re-monumented, recovered, found as expressed below:

NOTE: Not more than 4 corners, all in the same town and range, may be recorded on this certificate.

Grid table with columns A-M and rows 1-13. A dot is marked in cell G-5.

A. Description of original monument and accessories and/or subsequent restoration:
1921, GLO - H. Ball DS, set post, measured between corners G-5 & H-5 and I-5 & H-5, and 2 accessories.
1954, Recorded Plat "Kurtz Acres No. 1" L.25, P.33, by Richard C. West PS 6100, no description of monument, no accessories.
1956, Recorded Plat "Brookview Subdivision" L.29, P.35, by Richard C. West PS 6100, no description of monument, no accessories.
1965, Recorded Plat "Brookview Subdivision" L.42, Pgs. 34-35, by Richard C. West PS 6100, no description of monument, no accessories.
1972, Cert. Survey - L.1816, Pgs. 67-69 by John M. Budzick PS 18982, no description of monument, no accessories.

B. Description of corner evidence found and/or method applied in restoring or reestablishing corner:
Determined position for H-5 by retracing old N-5 1/4 line fence Section 15, T8N-R7E.
The only record we could recover that describes a monument at the corner H-5 was the G.L.O. notes when the corner was actually set. Since that time no one, including GCRC when Stanley Road was paved, has reported having the corner or accessories to it. When we first visited H-5, we were not surprised to find nothing monumenting the position of the corner. We were curious as to what it was that Mr. West must have been looking at when he was platting all of that property in Section 10. It appeared that he had some indication of the position of H-5, but he never gave a dimension to the corner to exactly define its position. We decided to look at some old county aerial photography to see what evidence of the North-South 1/4 line could be seen. We obtained an aerial photograph from 1966, (prior to the construction of Mott Dam). This photograph showed a well defined N-S 1/4 line in Section 15. The line is an old fence line with several large trees along it, and (Cont'd on back)

C. Description of monument for corner and accessories established to perpetuate locating the position of the corner:
N04W 50.03' Found conc. Monumnt at SW corner Lot 45, "Kurtz Acres No. 1", L.25, P.33
N61E 110.09' Found "T" iron at SE corner Lot 45, "Kurtz Acres No. 1", L.25, P.33
S75E 68.33' Set 1/2" rod (TP) 10' South of S'ly edge Asph. & 40' East of C/L drive to Hse #4274
S10E 50.44' Found 1/2" rod & cap RLS #10064
S02W 62.82' Found Nail & Tag RLS #10064 in NNW face P/P
N27W 36.18' Set chisled "+" in South rim Sanitary MH
Ratified by Genesee County Peer Group November 20, 1996. I set the Standard Berntsen Monument SS-A-5-BR-30 (3 1/4" D. brass cap stamped "Genesee County Remonumentation Corner 20709, 1996") with 30 x 2 3/8" O.D. stainless steel tubing.

Signed by Jack N. Owens
Surveyor's Michigan License No. 20709



12-27-96

Ratified by Peer Group in accordance with P.A. 345, 1990
Co. Rep. [Signature]
Date 10-30-96

3. Continued

appeared very straight on both the North and South sides of the Flint River. From this we conclude that the North-South 1/4 line location is a result of a survey subdividing Section 15. It likely was done by one of the County Surveyors from 1865-1900 when several were practicing in the County. When not holding the office they were not required to record their surveys, yet they followed the same procedures to subdivide sections. We then obtained an aerial photograph taken in 1992 of the same area and looked for similarities between the two photos. We noticed two large trees that appeared on both photos. We concluded that this old North-South fence was not only the best collateral evidence of the corner locations, but also the only evidence left. We next field located this N-s 1/4 line fence and trees along the fence and used it to locate a line through these points North and intersect it with the South Line of Section 10 as recorded on "Kurtz Acres No. 1", Mark W. Powell, Crew Chief recovered a RLS #10064 tag in the NNW face of a power pole to the South. After further investigation Mark also found a 1/2" rod and cap RLS #10064, and an old railroad tie anchor post, 50' from the center line of Stanley Road and at the rear of the property he found another 1/2" rod & cap RLS #10064, and an old railroad tie anchor post, both of which were in the N'y right of way fence for the Huckleberry Railroad. Mark searched along the West line of a yard to a residence that had been built after 1966 for evidence of a fence or the 1/4 line, but the only visible remnants were the two trees that appeared in the aerial photographs. On the Southerly side of the railroad Mark could not find any evidence of a 1/4 line fence or any large trees in a row. The property had evidently been cleared after it had been acquired by the Genesee County Park Department. The cover was thick 4" poplars near the railroad, and opened into 4'-6" high thick tags and thornapple bushes near the lake. Mark began uncovering very old and brittle pieces of 4" x 4" square pieces of fence approximately 3" below the ground. He was only locating what he believed to be the bottom strand of the fence and by eyeballing a line using the large cherry trees determined that the fence had fallen to the East, because he also had dips at approximately 4'-5' further East of the tree line and the fence base he was uncovering. Mark then traversed between the corners G-5 and H-5, tied in a plat concrete monument and a "T" iron that were set by Mr. West, and then tied down all of the pieces of fence he had recovered (13 pieces in 500 feet) along with any other evidence of the location of the 1/4 line. Upon bringing all of this information into the office, Jack n. Owens, PS #20709, evaluated the evidence and determined an average location of the old N-S 1/4 line fence. He also concluded that the irons recovered bore not relationship to the old fence. He contacted Kraft Engineering for information regarding their survey but did not receive any records to indicate what their line represents. We conclude that the fence is the best evidence to establish the corner and that the corner is obliterated, not lost. The fence is just East of the E'y right of way of the platted road to the North, about 3.4 feet whereas the scaled distance on the plat is approximately 6 feet. It is not as definite as the fence remnants. Also the distance from G-5 to H-5 is only 10 links different than the G.L.O. record, a reasonable difference commonly seen in section retracement surveys. I accept the position as a careful and faithful re-established position of the original corner.

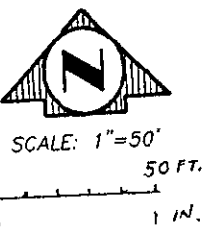
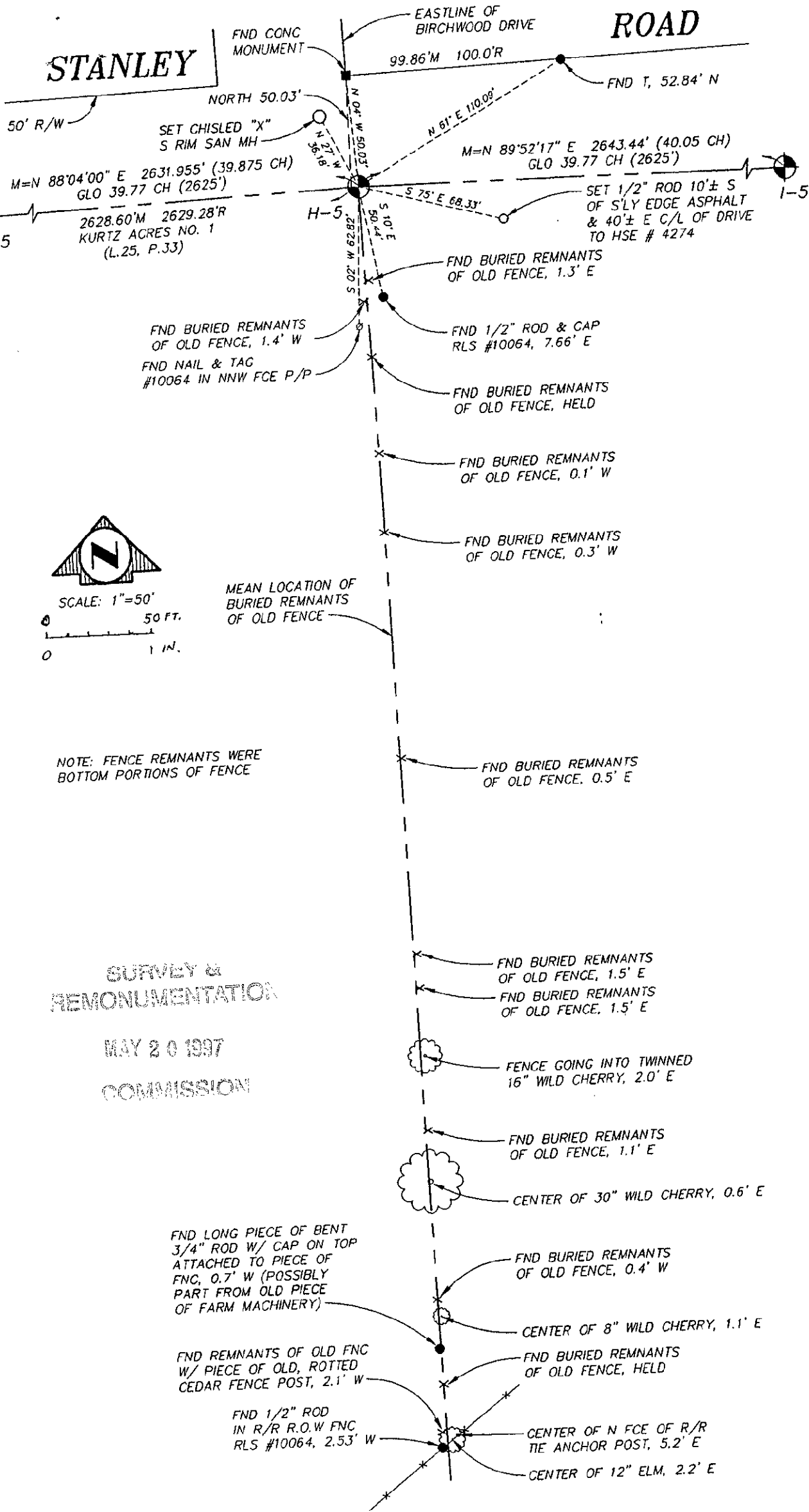
SURVEY &
REMONUMENTATION

MAY 20 1997

COMMISSION

STANLEY

EASTLINE OF BIRCHWOOD DRIVE ROAD



NOTE: FENCE REMNANTS WERE BOTTOM PORTIONS OF FENCE

SURVEY & REMONUMENTATION

MAY 20 1997

COMMISSION

10-25-96
COR H-5, T8N-R7E