

SURVEY & REMONUMENTATION

MAY 31 2000

SECTION

1996 Remonumentation Program
LAND CORNER RECORDATION CERTIFICATE
Filing Requirement of Act 74, Mich. P.A. 1970

MASTER LIBER 3437 PAGE 602
RECORDED
REGISTERED
DEC 30 3 12 PM '96
87759

For corners in

Genesee (county)	Located In:	Corner Code #
1. Public Land Survey	T <u>8N</u> R <u>8E</u>	<u>B-5</u>
	T ___ R ___	___
	T ___ R ___	___
	T ___ R ___	___
2. Property Controlling in Section	S ___ T ___ R ___	___
	S ___ T ___ R ___	___
3. Miscellaneous Property in Sec.	S ___ T ___ R ___	___
	S ___ T ___ R ___	___

Register of Deeds Stamp & File Number

4. Lot No. _____, Recorded Plat _____
5. Private Claims _____

I, James E. Kovas, in a field survey on November 12, 1996, do hereby certify that under requirements of P.A. 74, Michigan P.A. of 1970, the corner points mentioned in lines 1 and 2 above were in conformance with regulations and rules therefore as required in the current manual of survey instructions of the United States Department of the Interior, Bureau of Land Management or by a decree of a Court of Law and/or that the corner points mentioned in lines 3, 4 and 5 above were in conformance with the rules of the Michigan Board of Land Surveyors or by a Decree of a Court of Law; established, re-established, monumented, re-monumented, recovered, found as expressed below:

NOTE: Not more than 4 corners, all in the same town and range, may be recorded on this certificate.

A. Description of original monument and accessories and/or subsequent restoration:

B-5 1821 - G.L.O. Set 1/4 Post WIT: South 20 Lks. Pine; S80°W 35 Lks. Tree

	A	B	C	D	E	F	G	H	I	J	K	L	M
2	6		5		4		3		2				
3													
4	7		8		9		10		11		12		
5													
6	18		17		16		15		14		13		
7													
8	19		20		21		22		23		24		
9													
10	30		29		28		27		26		25		
11													
12	31		32		33		34		35		36		
13													

Ratified by Peer Group in accordance with P.A. 345, 1990
Co. Rec. James E. Kovas
Date 12-11-96

B. Description of corner evidence found and/or method applied in restoring or reestablishing corner:

B-5 Lost Corner

Corner re-established by single proportionate measure between corners A-5 and C-5, T8N, R8E, Richfield Township.

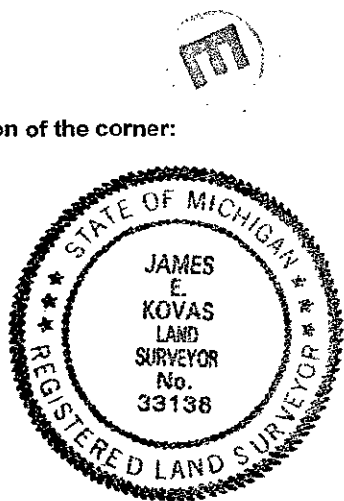
The resulting distances are as follows:
B-5 to A-5 = 2766.72' (GLO); 2753.11' (Wade-Trim Proportioned distance)
B-5 to C-5 = 2640.00' (GLO); 2627.00' (Wade-Trim Proportioned distance)

The re-established position was ratified by the Peer Review Committee on December 11, 1996, as the accepted corner.

C. Description of monument for corner and accessories established to perpetuate locating the position of the corner:

B-5 Set 2"X30" Iron Pipe with Brass Genesee Co. Remonumentation Cap in Swamp. (Monument in 1.0' of water, Brass Cap 0.1' above high water mark)

WIT: N20°E 21.63' Set 60d Nail/ Genesee Co. Remon Tag W.Face 4" Elm in water
S40°W 60.48' Set 60d Nail/ Genesee Co. Remon Tag NW Face 24" Elm
S25°W 37.80' Set 60d Nail/ Genesee Co. Remon Tag NW Face 10" Twin Elm



Signed by James E. Kovas Date December 27, 1996

Surveyor's Michigan License No. 33138