

MAY 20 1997

1996 Remonumentation Program
LAND CORNER RECORDATION CERTIFICATE
Filing Requirement of Act 74, Mich. P.A. 1970

MASTER LIBER 3434 PAGE 301

For corners in
Genesee

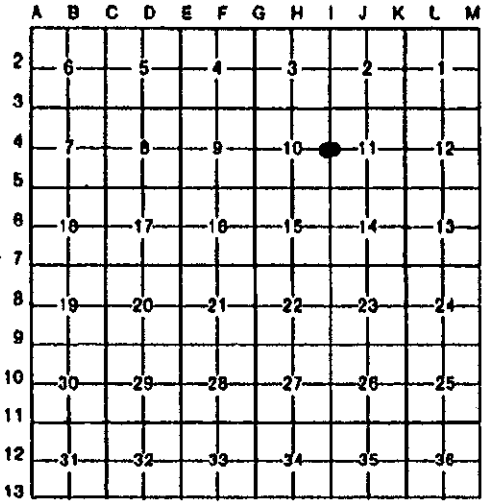
Located In: Corner Code #

- 1. Public Land Survey T 8N R 8E I-4
- 2. Property Controlling S T R
- in Section S T R
- 3. Miscellaneous S T R
- Property in Sec. S T R

82438
 REGISTERED
 DEC 23 2 07 PM '96
 Register of Deeds Stamp & File Number
 00
 filed
 RAC

- 4. Lot No. _____, Recorded Plat _____
- 5. Private Claims _____

I, James E. Kovas, in a field survey on September 23, 1996, do hereby certify that under requirements of P.A. 74, Michigan P.A. of 1970, the corner points mentioned in lines 1 and 2 above were in conformance with regulations and rules therefore as required in the current manual of survey instructions of the United States Department of the Interior, Bureau of Land Management or by a decree of a Court of Law and/or that the corner points mentioned in lines 3, 4 and 5 above were in conformance with the rules of the Michigan Board of Land Surveyors or by a Decree of a Court of Law; established, re-established, monumented, re-monumented, recovered, found as expressed below:



NOTE: Not more than 4 corners, all in the same town and range, may be recorded on this certificate.

A. Description of original monument and accessories and/or subsequent restoration:

I-4
 1821 - G.L.O. Set 1/4 Post WIT: S78°E 6 Lks. Pine; N30°W 11 Lks. Beech;
 1965 - Genesee Co. Road Comm., eight (8) accessories; 1973 - Robert Mitchell, PS# 5936, LCRC (Liber 1875, Page 554), three (3) accessories; 1974 - Consumers Power Co., (Liber 1888, Page 117) four (4) accessories; 1995 - Genesee Co. Road Commission, 1/2" Re-Rod, four (4) accessories.

Distances: I-4 to I-5 = 2640.00' (GLO); 2641.91' (Wade-Trim)

B. Description of corner evidence found and/or method applied in restoring or reestablishing corner:

- I-4 Found 1/2" Iron Rod, 0.4' below gravel grade
- Found 1-1/4" Iron Rod (same location as 1/2" Iron Rod, 1.1' below gravel grade)
- Found Stone (same location as 1/2" Iron Rod, 3.0' below gravel grade) with 1-1/4" Iron Rod embedded into top

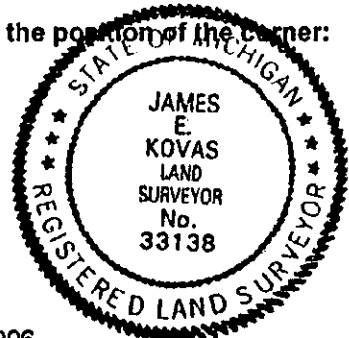
- WIT:
- S30°E 49.56' Fnd P.K. Nail/ Tag N.Face U.Pole
 - N80°E 143.33' Fnd P.K. Nail/ Tag S.Face 8" Tri-Elm
 - N40°W 38.43' Fnd Nail/ Tag E.Face 36" Catalpa
 - N80°W 32.30' Fnd 24" Maple
 - S65°E 67.9' Fnd Stump
 - N80°W 82.85' Fnd SE Corner House #7263
 - N30°W 86.90' Fnd Nail/ GEI Tag E.Face U.Pole

Ratified by Peer Group in accordance with P.A. 345, 1990
 Co. Rep. Carl Carlson
 Date 10-9-96

The Stone found was ratified by Peer Review Committee on October 9, 1996, as the accepted corner.

C. Description of monument for corner and accessories established to perpetuate locating the position of the corner:

- I-4 Set 2" X 30" Iron Pipe with Brass Genesee Co. Remon Cap
- WIT:
- S30°E 49.56' Set 60d Nail/ Genesee Remon Tag N.Face U.Pole
 - N80°E 143.33' Set 60d Nail/ Genesee Remon Tag S. Face 18" Tri-Elm
 - S40°W 74.20' Set 60d Nail/ Genesee Remon Tag E.Face 8" Boxelder
 - N40°W 38.43' Set 60d Nail/ Genesee Remon Tag E.Face 36" Catalpa



Signed by James E. Kovas Date December 20, 1996

Surveyor's Michigan License No. 33138