

ratified by Peer Group in accordance with P.A. 345, 1990

1996 Remonumentation Program

MASTER LIBER 3437 PAGE 603

o. Rep. Carl Carlson
ate 12-11-96

LAND CORNER RECORDATION CERTIFICATE
Filing Requirement of Act 74, Mich. P.A. 1970

RECORDED
REGISTERED
Dec 30 3 12 PM '96
83770

For corners in

Genesee (county)	Located In:	Corner Code #	Witness Monument
1. Public Land Survey	T 8N R 8E		for M-5
	T R		
	T R		
	T R		
2. Property Controlling in Section	S T R		
	S T R		
3. Miscellaneous Property in Sec.	S T R		
	S T R		

4. Lot No. _____, Recorded Plat _____

5. Private Claims _____

I, James E. Kovas, in a field survey on September 23, 1996, do hereby certify that under requirements of P.A. 74, Michigan P.A. of 1970, the corner points mentioned in lines 1 and 2 above were in conformance with regulations and rules therefore as required in the current manual of survey instructions of the United States Department of the Interior, Bureau of Land Management or by a decree of a Court of Law and/or that the corner points mentioned in lines 3, 4 and 5 above were in conformance with the rules of the Michigan Board of Land Surveyors or by a Decree of a Court of Law; established, re-established, monumented, re-monumented, recovered, found as expressed below:

NOTE: Not more than 4 corners, all in the same town and range, may be recorded on this certificate.

A. Description of original monument and accessories and/or subsequent restoration:

M-5 1821 - G.L.O. Set Corner

B. Description of corner evidence found and/or method applied in restoring or reestablishing corner:

M-5 Lost Corner

Corner position was re-established by single proportionate measure, along the Township line, between corners M-3 and M-6. This position falls in what is now the Holloway Reservoir. A reference monument was set on the Township line 40.00' North of the re-established position of M-5, as the drawing on the back of this form indicates. "WIT MON" was stamped on this monument to clarify that this monument is 40.00 feet North of the position of M-5, on the Township line.

The resulting distances are as follows:

M-5 to M-3 = 5280.00' (GLO); 5276.81' (Wade-Trim Proportioned distance)

M-5 to M-6 = 2640.00' (GLO); 2638.41' (Wade-Trim Proportioned distance)

The re-established position was ratified by Peer Review Committee on December 11, 1996, as the approved corner.

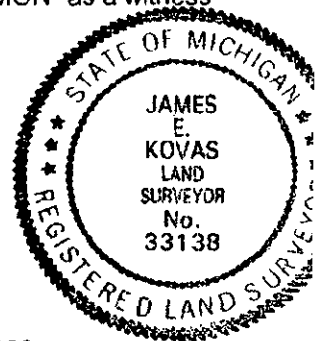
C. Description of monument for corner and accessories established to perpetuate locating the position of the corner:

M-5 Could not be set (in water)

Set 2" X 30" Iron Pipe with Brass Genesee County Remonumentation Cap. Stamped "WIT MON" as a witness monument to the position of M-5.

Accessories to Witness Monument:

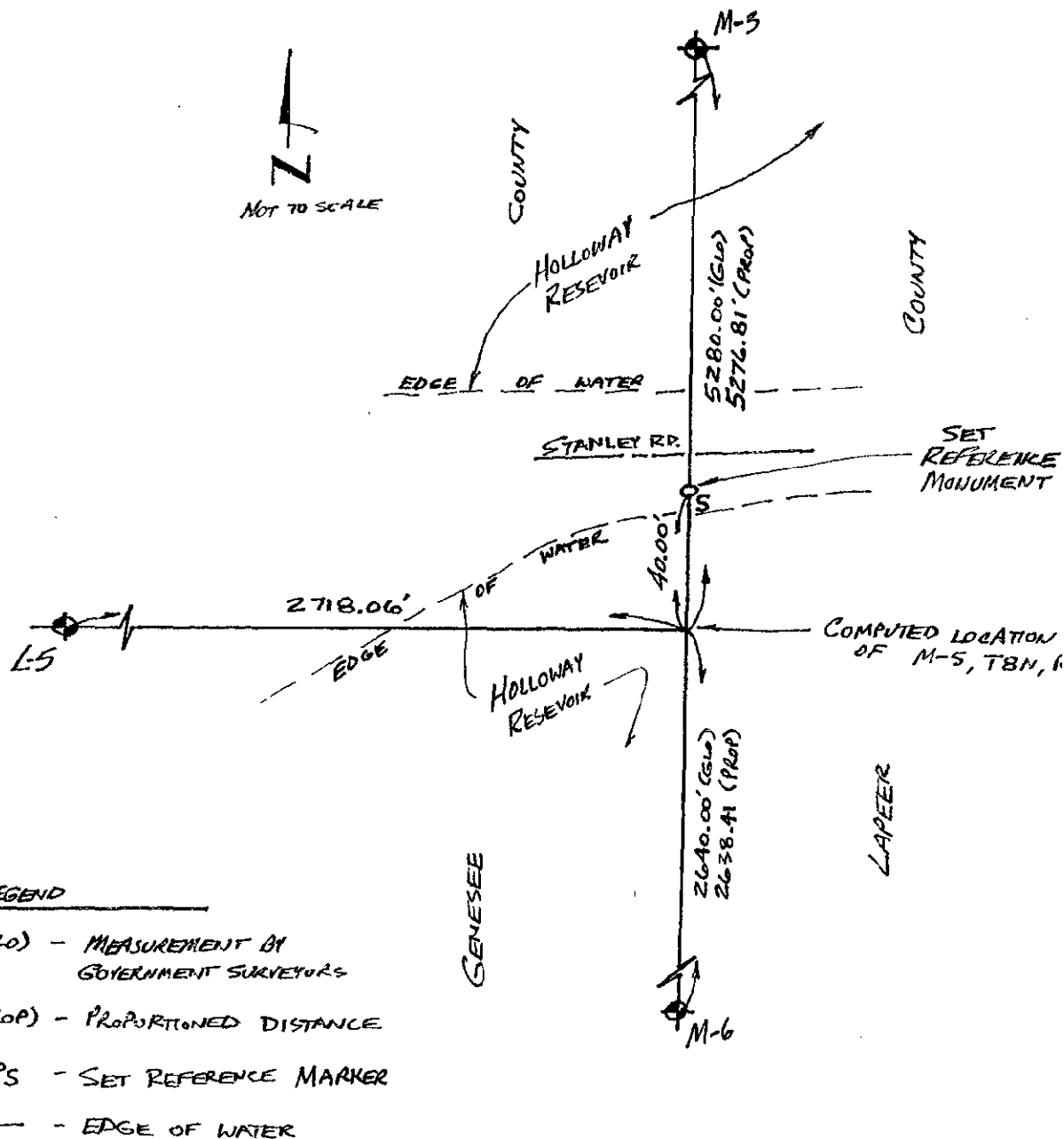
- WIT: N45°W 18.25' Set 60d Nail/ Genesee Co. Remon Tag SW Face Guard Rail Post
- N65°E 13.26' Set 60d Nail/ Genesee Co. Remon Tag SE Face Guard Rail Post
- North 10.5' S.Edge of Steel Guard Rail
- West 39.0' Centerline of E'ly 36" C.M.P.



Signed by James E. Kovas

Date December 27, 1996

Surveyor's Michigan License No. 33138



SURVEY &
ENGINEERING

MAY 20 1907

COMMISSION