

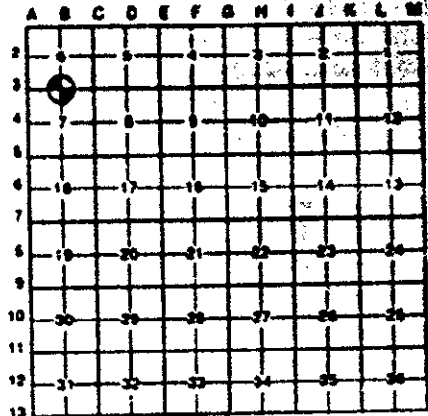
REMONUMENTATION CORNER UNDER ACT 345, MICHIGAN PUBLIC ACTS OF 1990
LAND CORNER RECORDATION CERTIFICATE
Filing Requirement of Act 74, Mich. P.A. 1970

For corners in

GENESEE County	Located in	Corner Code
1. Public Land Survey	T 9N R 5E	B-3
	T R	
	T R	
	T R	
2. Property Controlling in Section	S T R	
	S T R	
3. Miscellaneous Property in Sec.	S T R	
	S T R	

RECORDED
INDEXED
DEC 27 9 11 AM '93
GENESEE COUNTY
FLINT MICHIGAN
77856
Filed 9/26/100
Register of Deeds Stamp & File Number

4 Lot No. _____ Recorded Plat _____
5 Private Claims _____



DONALD G. RICHARDS in a field survey on December 3 19 93
do hereby certify that under requirements of P.A. 74, Michigan P.A. of 1970, the corner points mentioned in lines 1 and 2 above were in conformance with regulations and rules therefore as required in the current manual of survey instructions of the United States Department of the Interior, Bureau of Land Management or by a decree of a Court of Law and/or that the corner points mentioned in lines 3, 4 and 5 above were in conformance with the rules of the Michigan Board of Land Surveyors or by a Decree of a Court of Law, established, re-established, monumented, re-monumented, recovered, found as expressed below

NOTE: Not more than 4 corners, all in the same town and range, may be recorded on this certificate.

A. Description of original monument and accessories and/or subsequent restoration:

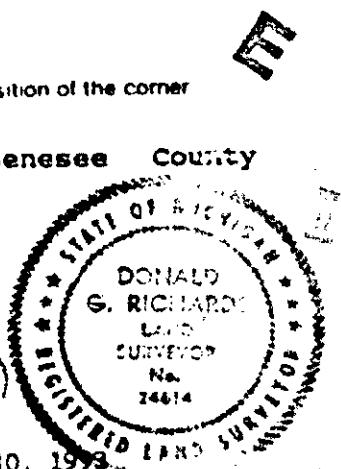
Horatio Ball/Hervey C. Parke
Tuesday, November 20th, 1821
"40.00 Set 1/4 S Post
W.O. 12 N 39 W 17
B Ash 14 S 76 E 23"
(see reverse side for additional information)

B. Description of corner evidence found and/or method applied in restoring or reestablishing corner

Found rered in Monument Box
SURVEY &
REMONUMENTATION
MAR 16 1994
COMMISSION

C. Description of monument for corner and accessories established to perpetuate locating the position of the corner

Set Bernsten monument SS-A5BR-30 stamped "Genesee County Remonumentation Corner" over rered in Monument Box
S 45 W 41.12' nail/GCWT* in NW face 40" Oak
N 10 W 49.3' nail/GCWT in E face power pole
N 70 E 74.14' nail/GCWT in SW face 13" Poplar
S 40 E 34.77' nail/GCWT in NW face 15" Scotch Pine
WEST 2323.33 section corner A-3, T9N-R5E
EAST 2634.90 section corner C-3, T9N-R5E
(* Genesee County Witness Tag)



Signed by DONALD G. RICHARDS [Signature] Date December 10, 1993

Surveyor's Michigan License No 24614
APPROVED by Genesee County Monumentation Peer Group 11-04-93

COUNTY SURVEYOR'S RECORDS

Milton B. Stage, November 2nd, 1891
"Stone, Brick, stake under
W. Oak 12 N 59 W 17
B. Ash 14 S 76 E 23
Pin Oak 4 N 70 W 68"

Milton B. Stage December 23rd, 1891
Stone
Pin Oak 4 N 70 W 68
Bk Ash 14 S 76 E 23

GCRC TIES

No. 78: Stone
SW 95.3 10" Oak
SSW 41.0 RRS in 24" Oak
SOUTH 27.5 24" Oak
SE 77.0 14" Ash

No. 139: Found Iron "T" bar 4" deep (Brewer Engr. for CPCO)
N 50 W 49.55 15" Pine
S 70 W 96.09 12" Oak
S 45 W 43.37 36" Oak
N 45 E 39.97 12" Pine

PA 74

pg 14 (1863/88-89) Karol R. Piotrowski 7-23-73
Found T-iron 3" below gravel surface
30" Oak S 45 W 39.50
18" Pine N 45 W 49.67

pg 21 (1873/876) Lyal H. Howison 11-27-73
Found 3/4" pipe 62 below surface of gravel road
15" pine NW 49.2
15" pine NE 39.75
30" Oak SW 41.55

PA 132 SURVEYS

1959/485 Jan S. Fokens 11-22-76
Found "T" in pile of red brick
N 05 W 49.00 PK in tele pole
S 45 W 39.50 PK in 36" Oak
SOUTH 33.10 face of corner post
NORTH 1.55 2nd "T" Iron

A.F. Miller 10-13-80 Found T Bar
12" Pine N 45 E 39.97
15" Pine N 50 W 49.55
12" Oak S 70 W 96.09
36" Oak S 45 W 43.37