

REMONUMENTATION CORNER UNDER ACT 345, MICHIGAN PUBLIC ACTS OF 1890

LAND CORNER RECORDATION CERTIFICATE
Filing Requirement of Act 74, Mich. P.A. 1970

For corners in

GENESSEE

County

Located in:

Montrose

Corner Code ±±

1. Public Land Survey	T	<u>9N</u>	R	<u>5E</u>	<u>G-3</u>
	T		R		
	T		R		
	T		R		
2. Property Controlling in Section	S		T	R	
	S		T	R	
3. Miscellaneous Property in Sec.	S		T	R	
	S		T	R	

- 4. Lot No. _____, Recorded Plat _____
- 5. Private Claims _____

RECORDED
Dec 27 9 11 AM '93
GENESEE COUNTY
FLINT MICHIGAN

77960

FILED & RECORDED 11.00

Register of Deeds Stamp & File Number

I, DONALD G. RICHARDS in a field survey on December 3, 19 93

do hereby certify that under requirements of P.A. 74, Michigan P.A. of 1970, the corner points mentioned in lines 1 and 2 above were in conformance with regulations and rules therefore as required in the current manual of survey instructions of the United States Department of the Interior, Bureau of Land Management or by a decree of a Court of Law and/or that the corner points mentioned in lines 3, 4 and 5 above were in conformance with the rules of the Michigan Board of Land Surveyors or by a Decree of a Court of Law, established, re-established, monumented, re-monumented, recovered, found as expressed below:

NOTE: Not more than 4 corners, all in the same town and range, may be recorded on this certificate.

A. Description of original monument and accessories and/or subsequent restoration:

John Mullett
 Wednesday, April 24th, 1839
 Set Post corner secs. 3, 4, 9, 10
 W. Oak 9 N 64 E .11
 W. Oak 10 S 28 W .04
 (see reverse side for additional information)

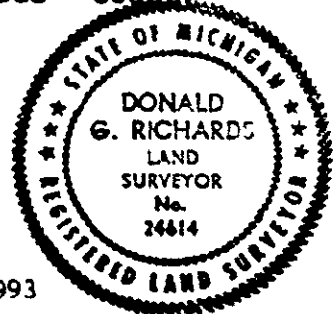
B. Description of corner evidence found and/or method applied in restoring or reestablishing corner:

Found "T" iron 127.6' E of centerline of McKinley Road

SURVEY &
 REMONUMENTATION
 MAR 16 1994
 COMMISSION

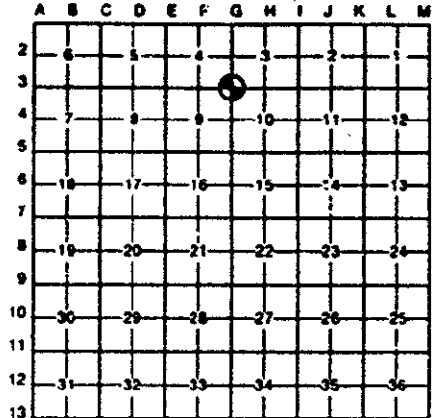
C. Description of monument for corner and accessories established to perpetuate locating the position of the corner:

Set Bernsten monument SS-A5BR-30 stamped "Genesee County Remonumentation Corner" over T-iron
 N 30 W 29.33' nail/GCWT* in 14" deciduous tree
 S 50 W 44.94' nail/GCWT in 26" deciduous tree
 S 05 W 49.90' nail/GCWT in 24" deciduous tree
 N 10 E 24.61' nail/GCWT in 6" deciduous tree
 WEST 2638.01' quarter corner F-3, T9N-R5E
 EAST 2114.84' SE corner Gov't Lot 6, Sec. 3, T9N-R5E
 EAST 2667.66' quarter corner H-3, T9N-R5E
 (* Genesee County Witness Tag)



Signed by DONALD G. RICHARDS Date December 10, 1993

Surveyor's Michigan License No. 24614
 APPROVED by Genesee County Monumentation Peer Group 11-04-93



GCRC TIES

No. 102: PI, Int of McKinley & Lake

No. 147: Set Iron T Bar 3" deep (Brewer Engr. for CPCO)

N 43 W 41.16 28" Oak

WEST 132.14 inter Lake & McKinley Road

S 60 W 45.72 15" Oak

S 35 E 45.11 16" stump

N 21 E 33.40 15" stump

PA 74

pg 38 (1977/812) David T. Rowe 1-19-77

Found "T" iron

N 44 W 41.16 nail in 28" Oak tree

N 21 E 33.40 nail in 15" stump

S 60 W 45.72 nail in 15" Oak tree