

**SURVEY & REMONUMENTATION**  
**APR 07 1995**  
**COMMISSION**

RECORDED

**LAND CORNER RECORDATION CERTIFICATE**

Nov 14 2 47 PM '93

For corners in GENESEE (County) REMONUMENTATION CORNER UNDER P.A. 345, MICHIGAN P.A. OF 1990

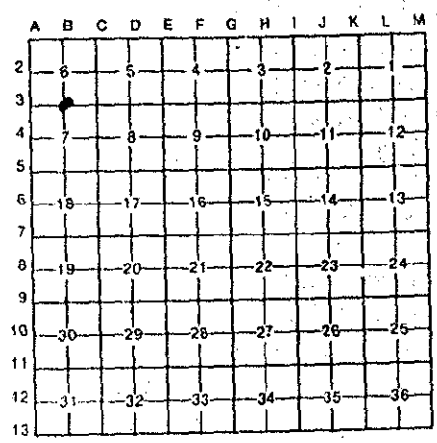
Located In: \_\_\_\_\_ Corner Code #/ \_\_\_\_\_

1. Public Land Survey	T <u>9N</u> R <u>7E</u>	<u>B-3</u>
	T _____ R _____	_____
	T _____ R _____	_____
	T _____ R _____	_____
2. Property Controlling in Section	S _____ T _____ R _____	_____
	S _____ T _____ R _____	_____
3. Miscellaneous Property in Sec.	S _____ T _____ R _____	_____
	S _____ T _____ R _____	_____
4. Lot No. _____, Recorded Plat _____		
5. Private Claims _____		

GENESEE COUNTY  
 DEED LIBER 2528 PAGE 816  
 14757

*9.00 Filed & Recd*  
 Register of Deeds Stamp & File Number

I, RICHARD H. KRAFT, in a field survey on NOVEMBER 17, 19 93, do hereby certify that under requirements of P.A. 74, Michigan P.A. of 1970, the corner points mentioned in lines 1 and 2 above were in conformance with regulations and rules therefore as required in the current manual of survey instructions of the United States Department of the Interior, Bureau of Land Management or by a decree of a Court of Law and/or that the corner points mentioned in lines 3, 4 and 5 above were in conformance with the rules of the Michigan Board of Land Surveyors or by a Decree of a Court of Law; established, re-established, monumented, re-monumented, recovered, found as expressed below:



**NOTE: Not more than 4 corners, all in the same town and range, may be recorded on this certificate.**

**A. Description of original monument and accessories and/or subsequent restoration:**

- 1822 GLO HORATIO BALL, L.S., SET POST
- 1887 SETH BEDIN, NOT DESCRIBED, 1 ACCESSORY  
G.C.R.C. SET IRON, LIST 4 ACCESSORIES, NO DATE  
G.C.R.C. FOUND IRON, LIST 4 ACCESSORIES
- 1979 JAN FOLKENS, L.C.R.C., LIST 3 ACCESSORIES

**B. Description of corner evidence found and/or method applied in restoring or reestablishing corner:**

- 1993 GENESEE COUNTY REMON. PROGRAM  
RECOVERED RE-ROD IN MONUMENT BOX AND 2 ACCESSORIES  
S75°W 92.25' P.K. & DISK IN TELEPHONE POLE  
N45°E 54.33' ROAD SIGN POST

I CONCLUDE THAT THE CORNER HAS LONG BEEN PERPETUATED AND DOESN'T SEEM TO HAVE CHANGED. SINCE G.C.R.C. REPAVING. THE TWO RECOVERED ACCESSORIES PRE DATE 1979 SHOWING IT IS THE SAME POSITION. I ACCEPT IT AS A FAITHFUL AND CAREFUL RESTORATION OF THE POSITION OF THE ORIGINAL CORNER.

APPROVED BY GENESEE COUNTY PEER REVIEW GROUP. NOVEMBER, 1993.

**C. Description of monument for corner and accessories established to perpetuate locating the position of the corner:**

- ACCESSORIES:**
- N50°E 81.51' FOUND NAIL AND TAG IN POWER POLE
  - S70°E 74.50' FOUND NAIL AND TAG IN POWER POLE
  - S75°W 92.25' FOUND NAIL AND TAG IN POWER POLE
  - N45°E 54.33' ROAD SIGN POST

I SET THE STANDARD BERNSTEN MONUMENT (3 1/4" D. BRASS CAP STAMPED "GENESEE COUNTY REMONUMENTATION CORNER, 1993" WITH 2 3/8" O.D. STAINLESS STEEL TUBE) OVER RE-ROD IN MON. BOX.

Signed by Richard H. Kraft  
 Surveyor's Michigan License No. 010064

Date Nov. 18, 1993

