

SURVEY & REMONUMENTATION

LAND CORNER RECORDATION CERTIFICATE
 Filing Requirement of Act 74, Mich. P.A. 1970

For corners of
GENESEE
 (County)

(REMONUMENTATION CORNER UNDER P.A. 345, MICHIGAN P.A. OF 1990)

APR 07 1995

Located In:

Corner Code -#

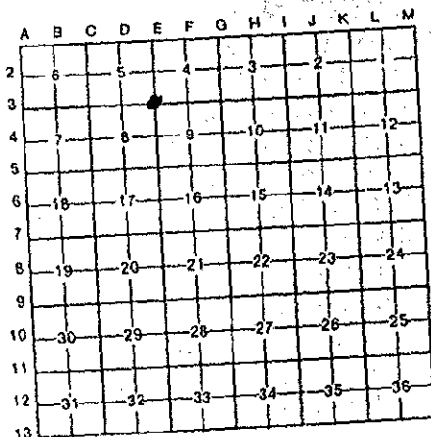
RECORDED
 REC'D
 Nov 14 2 47 PM '93
 GENESEE COUNTY
 DEED LIBER 2528 PAGE 813
 14753

1. Public Land Survey T 9N R 7E E-3
 T _____ R _____
 T _____ R _____
 T _____ R _____
 T _____ R _____
 2. Property Controlling S _____ T _____ R _____
 in Section S _____ T _____ R _____
 3. Miscellaneous S _____ T _____ R _____
 Property in Sec. S _____ T _____ R _____
 4. Lot No. _____, Recorded Plat _____
 5. Private Claims _____

9.00 Filed & Rec'd
 Register of Deeds Stamp & File Number

I, RICHARD H. KRAFT, in a field survey on NOVEMBER 17, 19 93, do hereby certify that under requirements of P.A. 74, Michigan P.A. of 1970, the corner points mentioned in lines 1 and 2 above were in conformance with regulations and rules therefore as required in the current manual of survey instructions of the United States Department of the Interior, Bureau of Land Management or by a decree of a Court of Law and/or that the corner points mentioned in lines 3, 4 and 5 above were in conformance with the rules of the Michigan Board of Land Surveyors or by a Decree of a Court of Law; established, re-established, monumented, re-monumented, recovered, found as expressed below:

NOTE: Not more than 4 corners, all in the same town and range, may be recorded on this certificate.



A. Description of original monument and accessories and/or subsequent restoration:

- 1822 GLO HORATIO BALL, L.S. SET POST
- 1877 M.B. STAGE, C.S. SET STAKE, NO ACCESSORIES
- G.C.R.C. FOUND STONE, LIST 8 ACCESSORIES
- 1972 L.C.R.C. HAROLD DARCEY L.S. FOUND NAIL, LIST 3 ACCESSORIES
- 1991 L.C.R.C. GILBERT BONNO, FOUND 1" PIPE IN MON. BOX, LIST 3 ACCESSORIES
- 1992 CERT. SUR. PAUL BROWN, FOUND PIPE IN MON. BOX, LIST 4 ACCESSORIES

B. Description of corner evidence found and/or method applied in restoring or reestablishing corner:

- 1993. GENESEE COUNTY REMON. PROGRAM
 RECOVERED RE-ROD IN MON. BOX &
 4 ACCESSORIES FROM 1992 CERT. SUR.
 3 ACCESSORIES FROM 1991 L.C.R.C. &
 2 ACCESSORIES FROM 1972 L.C.R.C. &
 2 ACCESSORIES FORM G.C.R.C.

I CONCLUDE THAT THE CORNER HAS LONG BEEN PERPETUATED AND DOESN'T SEEM TO HAVE CHANGED SINCE G.C.R.C. REPAVING. I ACCEPT IT AS A FAITHFUL AND CAREFUL RESTORATION OF THE POSITION OF THE ORIGINAL CORNER.

APPROVED BY GENESEE COUNTY PEER REVIEW GROUP.
 NOVEMBER, 1993.

C. Description of monument for corner and accessories established to perpetuate locating the position of the corner:

- ACCESSORIES:
- S45°E 72.79' FOUND TAG #32337 IN NE FACE POWER POLE
 - N45°E 77.12' FOUND TAG #11192 IN SE FACE FENCE POST
 - N50°W 69.30' FOUND DELTA TAG IN SE FACE 12" BIRCH
 - N40°W 77.07' FOUND TAG #32337 IN E FACE 24" ASH.

I SET THE STANDARD BERNSTEN MONUMENT (3 1/4" D. BRASS CAP STAMPED "GENESEE COUNTY REMONUMENTATION CORNER, 1993" WITH 2 3/8" O.D. STAINLESS STEEL TUBE) OVER RE-ROD IN MON. BOX.

Signed by Richard H. Kraft
 Surveyor's Michigan License No. 10064

Date Nov. 18, 1993

