

SURVEY & REMONUMENTATION

MAY 31 2000

SECTION

LAND CORNER RECORDATION CERTIFICATE

Filing Requirement of Act 74, Mich. P.A. 1970

(Remonumentation corner under P.A. 345, Michigan P.A. of 1990)

DEED LIBER 2522 PAGE 87

GENESEE COUNTY
CLINT MICHIGAN

JAN 6 8 42 AM '94

REGISTERED

RECORDED

For corners in Genesee (County)	Located In: <i>Forest Twp</i>	Corner Code #
1. Public Land Survey	T 9N R 8E	B-3
	T R	
	T R	
	T R	
2. Property Controlling in Section	S T R	
	S T R	
3. Miscellaneous Property in Sec.	S T R	
	S T R	
4. Lot No. _____, Recorded Plat _____		
5. Private Claims _____		

Register of Deeds Stamp & File Number

FILED & RECORDED

1	A	B	C	D	E	F	G	H	I	J	K	L	M
2	6	5	4	3	2	1							
3	7	8	9	10	11	12							
4	18	17	16	15	14	13							
5	19	20	21	22	23	24							
6	30	29	28	27	26	25							
7	31	32	33	34	35	36							

I, Jack N. Owens, Prof. Surveyor, in a field survey on October 11 19 93, do hereby certify that under requirements of P.A. 74, Michigan P.A. of 1970, the corner points mentioned in lines 1 and 2 above were in conformance with regulations and rules therefore as required in the current manual of survey instructions of the United States Department of the Interior, Bureau of Land Management or by a decree of a Court of Law and/or that the corner points mentioned in lines 3, 4 and 5 above were in conformance with the rules of the Michigan Board of Land Surveyors or by a Decree of a Court of Law; established, re-established, monumented, re-monumented, recovered, found as expressed below.

NOTE: Not more than 4 corners, all in the same town and range, may be recorded on this certificate.

A. Description of original monument and accessories and/or subsequent restoration:

1822, GLO - J. Fletcher, D.S. set post, no accessories
 1872, GCSR - S.R. Billings, C.S. stone, brick & earthenware, no accessories but msrmts. btwn. cors.
 1878, GCSR - S. Mathewson, C.S. stone & crockery, no accessories but msrmts. btwn. cors.
 1935/36, GCRC & wit. book, ind. stone & stake, set 3/4" iron bar & r accessories
 1973 Cert. Sur's - L1856, P783; L1876, P440; C.H. Carlson, PS9189; fnd "T" bar & lists 3 1935/36 accessories
 REI sur. records - K.D. Dunton, PS23503 (1976); LCRC, L1977, P825 (1977) K.D. Dunton PS23503; fnd "T" iron, lists 2 of 1935/36 accessories & 2 new ones.

B. Description of corner evidence found and/or method applied in restoring or reestablishing corner:

1993, Gen. Co. Remon Program. J. Fink & R. Savela Recovered "T" iron & stone (pointed, 9" x 6 1/2" x 5", 3-sided) below tee & 3/4" iron bar 27" down directly below stone) & 5 accessories (34" Oak to SW from 1935/36, p. pole to SW from 1973, wood post to NE, twin 4" Elm to NW)
 66.6 to 66.7 ft./ch. The stone dates to 1878 when it replaced the 1872 perpetuation. I accept the stone, T-iron and 3/4" iron bar as a faithful and careful perpetuation of the position of the original corner.

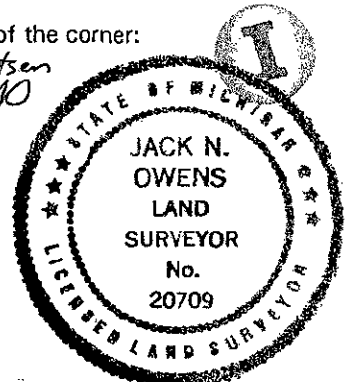
Dist to A-3 = 2938.59' EDM (44.524 ch) [cf = 44.46 ch (2934') in 1878, 44.48 ch (2936') in 1872, 44.10 GLO, but corrected = 44.60 ch (2937') in 1822]
 Dist to C-3 = 2669.77' (40.451 ch) EDM [cf = 40.95 ch (an error, possibly 40.45 ch) in 1878, 40.46 ch (2670') in 1872, 40.00 ch GLO, but corrected = 40.50 ch (2673') in 1822]
 The total mile is consistant = 5608.35' (84.975 ch) [cf = 84.94 ch (5606') by Co. Sur. in 1872 and 84.10 ch (5550') GLO, but corrected = 85.10 ch (5617')]
 Dividing EDM measurement by GLO corrected gives 65.9 ft./ch. for Dep. Sur. chain, a logical figure whereas the GLO record value gives

Ratified by Genesee Co. Peer Group Dec, 14, 1993

C. Description of monument for corner and accessories established to perpetuate locating the position of the corner:

Accessories:
 S20W, 77.75' nail/tag #9189 E. fc. 34" Oak
 S65W, 122.49' fnd nail/tag #9189 N. fc. p. pole
 S45W, 43.76' fnd nail/disc E. fc. wood post
 N45E, 47.49' rod w/cap #9189
 N35W, 64.34' fnd nail/tag #9189 Sw fc. twin 4" Elm

I set the standard Bernsten monument SS-A-5-BR-30 (3 1/4" d. brass cap stamped "Genesee County Remonumentation Corner, 20709, 1993" with 30" x 2 2/8" O.D. stainless steel tube over 3/4" iron bar 0.5' ± below surface



1058

Signed by Jack N. Owens

Date Dec 29, 1993

Surveyor's Michigan License No. 20709

49