

MAY 31 2000

SECTION

LAND CORNER RECORDATION CERTIFICATE
Filing Requirement of Act 74, Mich. P.A. 1970

DEED LIBER 2522 PAGE 88

(Remonumentation corner under P. A. 345, Michigan P. A. of 1990)

For corners in

Genesee
(County)

Located In:

Corner Code #

Forest Twp

- | | | | |
|------------------------------------|------|------|-----|
| 1. Public Land Survey | T 9N | R 8E | C-3 |
| | T | R | |
| | T | R | |
| | T | R | |
| 2. Property Controlling in Section | S | T | R |
| | S | T | R |
| 3. Miscellaneous Property in Sec. | S | T | R |
| | S | T | R |
| 4. Lot No. _____, Recorded Plat | | | |
| 5. Private Claims | | | |

RECORDED
REGISTERED
JUN 5 8 48 AM '94
GENESEE COUNTY
FLINT MICHIGAN

Register of Deeds Stamp & File Number

FILED & RECORDED

	A	B	C	D	E	F	G	H	I	J	K	L	M
1													
2	6	5	4	3	2	1							
3													
4	7	8	9	10	11	12							
5													
6	18	17	16	15	14	13							
7													
8	19	20	21	22	23	24							
9													
10	30	29	28	27	26	25							
11													
12	31	32	33	34	35	36							
13													

I, Jack N. Owens, Prof. Surveyor, in a field survey on October 11 19 93, do hereby certify that under requirements of P.A. 74, Michigan P.A. of 1970, the corner points mentioned in lines 1 and 2 above were in conformance with regulations and rules therefore as required in the current manual of survey instructions of the United States Department of the Interior, Bureau of Land Management or by a decree of a Court of Law and/or that the corner points mentioned in lines 3, 4 and 5 above were in conformance with the rules of the Michigan Board of Land Surveyors or by a Decree of a Court of Law; established, re-established, monumented, re-monumented, recovered, found as expressed below:

NOTE: Not more than 4 corners, all in the same town and range, may be recorded on this certificate.

A. Description of original monument and accessories and/or subsequent restoration:

- 1822, GLO - J. Fletcher, D.S. set post, no accessories
- 1868 & 1880, GCSR - M.B. Stage, C.S. set stone, no accessories but shows msrmts. btwn. cors.
- 1872, GCSR - S.R. Billings, C.S. stake, 1 accessory also shows msrmts. btwn. cors.
- 1878, GCSR - S. Mathewson, C.S. Stone, crockery no accessories but shows msrmts. btwn. cors.
- 1924/26, GCRC - Irish Rd. plans J.A. Dennis Co. Hwy. Engr., stake not sure was sec. cor. & 3 accessories
- 1973, RODEeds & Flint Sur. & Engr. records, Cert. Sur. L1876, P440 C.H. Carlson, L89189 & 3 accessories, Fnd. "T" bar
- 1973, GCRC Wit Book, "T" iron & 4 accessories
- 1978, REI Sur. records, fnd 3/4" pipe in mon box, no accessories

1983, Flint Sur. & Engr. records. - C.H. Carlson. PS9189, Cert. Sur. (unrecorded), Fnd "T" iron & 3 accessories

B. Description of corner evidence found and/or method applied in restoring or reestablishing corner:

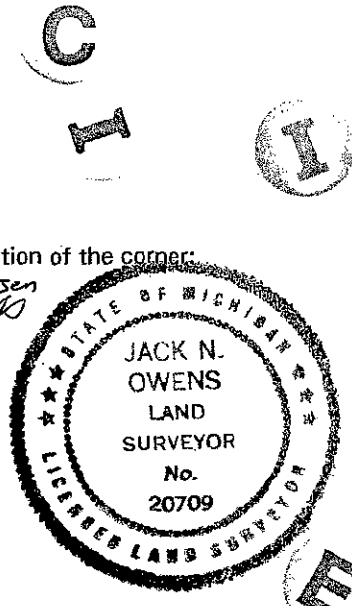
1993 Gen. Co. Remon. Program
Recovered 5/8" rod in mon. box & 5 accessories (2 in p. pole to SW 1973, rod to SW, p. pole to NE, 8" Elm to SE)
Dist to B-3 = 2669.77' EDM (40.451 ch) [cf = 40.95 ch in 1878 (an error), 40.46 ch (2670) in 1972, 40.00 ch GLO, but corrected + 40.50 ch (2673') in 1822]
Dist to D-3 = 2674.28' (40.519 ch) [cf = 40.42 ch (2668'), 1868/1880, 40.055 ch (2644') GLO but corrected = 40.555 ch (2677') in 1822]
As in Cor. B-3 dividing EDM by GLO corrected gives 65.9 ft./ch. for Dep. Sur. chain, a logical value. The GCRC had the corners 1/2 & 1 mile N & S in 1924/26 which were stones and stakes. They called it a P.I. on "Sec line" but road references go back to 1868. I conclude the road was built to the corner since all other adjacent corners are "in the roads".

Thus this was previously re-established by collateral evidence. Due to that and the long history and close agreement to 120 year old distances I accept the 5/8" rod as a faithful and careful re-establishment of the position of the original corner.

C. Description of monument for corner and accessories established to perpetuate locating the position of the corner:

- Accessories:
S55W, 95.05' fnd "p.k." tag N. fc. p. pole & 95.36' and fnd nail/tag #9189 SE fc. p. pole (1973)
N55W, 41.31' chiseled "+" in E. edge of top of third guard rail post from W. end of guardrail
N20E, 156.02' fnd. nail/tag #9189 W. fc. p. pole
S25E, 115.09' fnd nail/tag #9189 W. fc. 8" Elm
S45W, 71.03' fnd rod/cap #19002

I set the standard Bernsten monument SS-A-5-BR-30 (3 1/4" d. brass cap stamped "Genesee County Remonumentation Corner, 20709, 1993" with 24" x 2 3/8" O.D. stainless steel tube over rod in mon. box



1059

Signed by Jack N. Owens

Date 12-29-93

Surveyor's Michigan License No. 20709

50