

MAY 31 2000

SECTION

LAND CORNER RECORDATION CERTIFICATE
Filing Requirement of Act 74, Mich. P.A. 1970

DEED LIBER 2522 PAGE 89

(Remonumentation corner under P. A. 345, Michigan P. A. of 1990)

For corners in
Genesee
(County)

Located In:

Corner Code #

Forest Twp

1. Public Land Survey	T	9N	R	8E	D-3
	T		R		
	T		R		
	T		R		
2. Property Controlling in Section	S	T	R		
	S	T	R		
3. Miscellaneous Property in Sec.	S	T	R		
	S	T	R		

RECORDED
REGISTERED
JUN 6 8 42 AM '94
GENESEE COUNTY
LINT MICHIGAN

Register of Deeds Stamp & File Number

FILED & RECORDED

4. Lot No. _____, Recorded Plat _____
5. Private Claims _____

A	B	C	D	E	F	G	H	I	J	K	L	M
2	6	5	4	3	2	1						
3												
4	7	8	9	10	11	12						
5												
6	18	17	16	15	14	13						
7												
8	19	20	21	22	23	24						
9												
10	30	29	28	27	26	25						
11												
12	31	32	33	34	35	36						
13												

I, Jack N. Owens, Prof. Surveyor, in a field survey on October 11 19 93, do hereby certify that under requirements of P.A. 74, Michigan P.A. of 1970, the corner points mentioned in lines 1 and 2 above were in conformance with regulations and rules therefore as required in the current manual of survey instructions of the United States Department of the Interior, Bureau of Land Management or by a decree of a Court of Law and/or that the corner points mentioned in lines 3, 4 and 5 above were in conformance with the rules of the Michigan Board of Land Surveyors or by a Decree of a Court of Law; established, re-established, monumented, re-monumented, recovered, found as expressed below:

NOTE: Not more than 4 corners, all in the same town and range, may be recorded on this certificate.

A. Description of original monument and accessories and/or subsequent restoration:

1822, GLO - J. Fletcher, D.S. set post, no accessories
1868 & 1880, GCSR - M.B. Stage, Co. Sur. stone, brick/dressed Quartz, also 2 accessories
1936-38, GCRC & wit book - fnd stone, also 4 accessories
1972, Kraft Sur. Records - R.F. Frank PS14093, also 1 accessory from 1936-38 & 2 new ones
1977, Cert. Sur. L 1991, P 367, J.S. Fokens PS21567 fnd rerod also one accessory from 1936-38 & two from 1972

B. Description of corner evidence found and/or method applied in restoring or reestablishing corner:

1993 Gen. Co. Remon. Program J. Fink & R. Savella Recovered 1/2" rerod x 6" long directly over pt. of pinkish granite boulder (dressed Quartz) (19" long x 12" x 8", faceted, 1.5' deep) & leaning next to it a pointed greenish gray shale stone (9 1/2" long x 5" x 4", rounded, but 4 sided) & 2 accessories (p. pole to NE from 1972, 30" Hickory to SW from 1936)
Dist. to C-3 = 2674.28' [40.519 chs] EDM, (cf = 2667.7' [40.42 chs] in 1868/1880; 2643.6' [40.055 chs] in 1822 GLO; 2676.6' [40.555 chs] GLO corrected)
Dist to E-3 = 2635.66' [39.934 chs] EDM, (cf = 2640.0' [40.00 chs] in 1868/1880; 2643.6' 40.055 chs] in 1822 GLO)

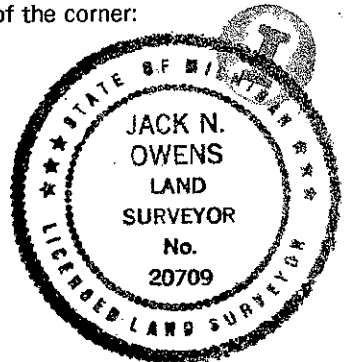
Total mile consistent = 5309.94' (80.454 chs) EDM, (cf = 5307.7' [80.42 chs] in 1868/1880, 5287.3' [80.11 chs] in 1822 GLO; 5320.3' [80.61 chs] corrected GLO. The recovered stone by the Co. Sur. shows half chain error is in original GLO measurement and no changes in over 120 years. Thus I conclude the corner hasn't moved and accept the stones and 1/2" rerod as a faithful and careful perpetuation of the position of the original corner.

Ratified by Gen. Co. Peer Group Dec. 14, 1993

C. Description of monument for corner and accessories established to perpetuate locating the position of the corner:

Accessories:
N55E, 68.40' set pk/GCRemon tag NW fc. p. pole (1972 acc. pole)
S40E, 53.14' set pk/GCRemon tag top center wood post
S50W, 91.42' set 2 1/2" pk/GCRemon tag SE fc. 30" Hickory (1936 acc. tree)
N30W, 58.90' set spk/GCRemon tag E. fc. 6" Hickory

I set the standard Bernsten monument SS-A-5-BR-30 (3 1/4" d. brass cap stamped "Genesee County remonumentation Corner, 20709, 1993" with 30" x 2 3/8" O.D. stainless steel tube with plastic magnetic base at the position of the corner 6" below grade.



1060

Signed by *Jack N. Owens*

Date *12-29-93*

Surveyor's Michigan License No. *20709*

(51)