

MAY 31 2000

LAND CORNER RECORDATION CERTIFICATE

DEED LIBER 2522 PAGE 94

SECTION

Filing Requirement of Act 74, Mich. P.A. 1970

(Remonumentation corner under P. A. 345, Michigan P. A. 1990)

For corners in
Genesee
(County)

Located In:

Corner Code #

Forest Twp

- 1. Public Land Survey T 9N R 8E I-3
- T R
- T R
- T R
- 2. Property Controlling S T R
- in Section S T R
- 3. Miscellaneous S T R
- Property in Sec. S T R
- 4. Lot No. _____, Recorded Plat _____
- 5. Private Claims _____

RECORDED
REGISTERED
JAN 6 8 43 AM '91
GENESEE COUNTY
FLINT MICHIGAN

Register of Deeds Stamp & File Number

FILED & RECORDED

1	A	B	C	D	E	F	G	H	I	J	K	L	M
2	6	5	4	3	2	1							
3													
4	7	8	9	10	11	12							
5													
6	18	17	16	15	14	13							
7													
8	19	20	21	22	23	24							
9													
10	30	29	28	27	26	25							
11													
12	31	32	33	34	35	36							
13													

I, Jack N. Owens, Prof. Surveyor, in a field survey on October 12 19 93 do hereby certify that under requirements of P.A. 74, Michigan P.A. of 1970, the corner points mentioned in lines 1 and 2 above were in conformance with regulations and rules therefore as required in the current manual of survey instructions of the United States Department of the Interior, Bureau of Land Management or by a decree of a Court of Law and/or that the corner points mentioned in lines 3, 4, and 5 above were in conformance with the rules of the Michigan Board of Land Surveyors or by a Decree of a Court of Law, established, re-established, monumented, re-monumented, recovered, found as expressed below:

NOTE: Not more than 4 corners, all in the same town and range, may be recorded on this certificate.

A. Description of original monument and accessories and/or subsequent restoration:

- 1822, GLO-J. Fletcher, D.S., set post, no accessories
- 1882, GCSR-M. Middleton, C.S., Oak post, 1 accessory & shows msrmts. btwn cors.
- 1882, GCSR-SNBedew, C.S. does not describe mon., no accessories, but shows msrmts. btwn cors.
- 1930, 1935/37, CGRC & wit book, 1" sq iron rod, & 5 accessories.
- 1969, REI sur. records DTRowe, PS11192, "+" in top mon. box & 3 accessories
- 1974, Cert. Sur. L1897, P79, EJMcCombs, PS10696, fnd. sq. rod in mon. box, & 3 1969 accessories & 1 new one.
- 1974, Cert. Sur. L1900, P893, JSFokens, PS21567, "+" in top mon. box & 3 1989 accessories & 1 new one.

- 1976 Cert. Sur. L1951, P961, JABeck, PS21559 "+" in top mon. box & 3 1969 accessories
- 1990, Cert. Sur. L2416, P7, JNOwens, PS20709, fnd sq. rod in mon. box & 4 accessories

B. Description of corner evidence found and/or method applied in restoring or reestablishing corner:

- 1993 Gen. Co. Remon Program
- Recovered 1" rod in mon. box & 6 accessories
- (2 gate posts to NE from 1969; 12" Oak to NW from 1990;
- 12" Beech to NW from 1990; 8" Oak to NW from 1990;
- 16" Ash to sw from 1990)
- Dist. G-3 to I-3 = 5262.33' (79.732 ch) [5262.21' in 1974, 5264.55' in 1935, 79.845 ch (5270') in 1882, 79.85 ch (5270') GLO in 1822]
- Dist. I-3 to K-3 = 5291.52' (80.174 ch) [5297.0' in 1930, 80.37 ch (5304') in 1882, 80.00 ch 5280' GLO in 1822)

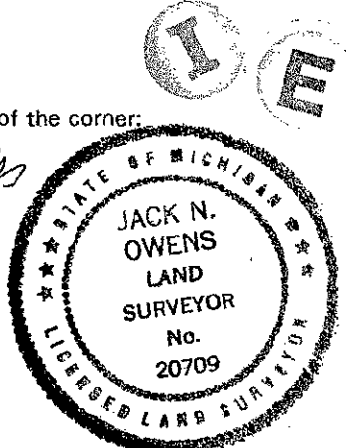
The half-mile measurements are also close. The distance from I-3 to J-3 is 16 ft different but may be related to measurements over the hilly terrain. There is no evidence the corner has changed and I conclude the position for I-3 hasn't changed and the sq. rod dates to 1930. I accept the 1" sq. rod in the mon. box as a faithful and careful perpetuation of the position fo the original corner.

Ratified by Gen. Co. Peer Group Dec 21, 1993

C. Description of monument for corner and accessories established to perpetuate locating the position of the corner:

- Accessories:
- N20E, 33.97' S. fc. 10" iron gate post
 - N60E, 61.05' S. fc. 10" iron gate post
 - N10W, 47.18' fnd nail/flag W. fc. 12" Oak
 - N20W, 52.18' fnd nail/flag WSW fc. 12" Beech & 52.25' & set spk/GCREmon. tag WSW fc.
 - N45W, 50.21' fnd nail/flag N. fc. 8" Oak & 63.999' spk/GCREmon tag N. fc.
 - S40W, 64.04' fnd nail/flag N. fc. 16" Ash & 63.99' set spk/GCREmon tag N. fc.

I set the standard Bernstein monument SS-A-5 BR-30 (3 1/4" d. brass cap stamped "Genesee County Remonumentation Corner, 20709, 1993" with 24" x 2 3/8" O.D. stainless steel tube) over sq. bar in mon. box.



Signed by Jack N. Owens
Surveyor's Michigan License No. 20709

Date 12-29-93

56