

MAY 31 2000

SECTION

LAND CORNER RECORDATION CERTIFICATE

Filing Requirement of Act 74, Mich. P.A. 1970

(Remonumentation corner under P.A. 345, Michigan P.A. of 1990)

DEED LIBER 2522 PAGE 96

For corners in

Genesee (County)	Located In: <i>Forest Twp</i>	Corner Code # K-3
1. Public Land Survey	T 9N R 8E	_____
	T _____ R _____	_____
	T _____ R _____	_____
	T _____ R _____	_____
2. Property Controlling in Section	S _____ T _____ R _____	_____
	S _____ T _____ R _____	_____
3. Miscellaneous Property in Sec.	S _____ T _____ R _____	_____
	S _____ T _____ R _____	_____
4. Lot No. _____, Recorded Plat _____		
5. Private Claims _____		

RECORDED
REGISTERED
JAN 6 8 43 AM '94
GENESEE COUNTY
FLINT MICHIGAN
Register of Deeds Stamp & File Number

FILED & RECORDED

A	B	C	D	E	F	G	H	I	J	K	L	M
6	5	4	3	2	1							
7	8	9	10	11	12							
18	17	16	15	14	13							
19	20	21	22	23	24							
30	29	28	27	26	25							
31	32	33	34	35	36							

I, Jack N. Owens, Prof. Surveyor, in a field survey on October 12 19 93, do hereby certify that under requirements of P.A. 74, Michigan P.A. of 1970, the corner points mentioned in lines 1 and 2 above were in conformance with regulations and rules therefore as required in the current manual of survey instructions of the United States Department of the Interior, Bureau of Land Management or by a decree of a Court of Law and/or that the corner points mentioned in lines 3, 4 and 5 above were in conformance with the rules of the Michigan Board of Land Surveyors or by a Decree of a Court of Law; established, re-established, monumented, re-monumented, recovered, found as expressed below:

NOTE: Not more than 4 corners, all in the same town and range, may be recorded on this certificate.

A. Description of original monument and accessories and/or subsequent restoration:

1822, GLO - J. Fletcher, set post, no accessories	from 1978 & 3 new ones.
1882, GLO, GCRC - SNBedew, C.S., pine root post & 1 accessory also shows msrmts. btwn cors.	1992, Cert. Sur. L2469, P880, HNELrich, PS18986, fnd 1" bar in mon. box & 2 1987 accessories & 1 1978 accessory
1883, GCSR - SNBedew, C.S. iron bar under stone & no accessories but shows msrmts. btwn. cors.	
1920, 1930, & 1937, GCRC & wit. book, stone & pipe & 14 accessories.	
1978, Cert. Sr. L2016, P189, B. Henderson. PS16043, fnd 1" iron in mon. box, & 5 accessories.	
1979, Cert. Sr. L2045, P195, DTRowe, PS11192, fnd 1" bar in mon. box & 3 accessories from 1978 & 1 new one	
1987, Cert. Sur. L2303, P239, JNOWens, PS20709, fnd 1 1/2" iron pin in mon. box & 1 accessory	

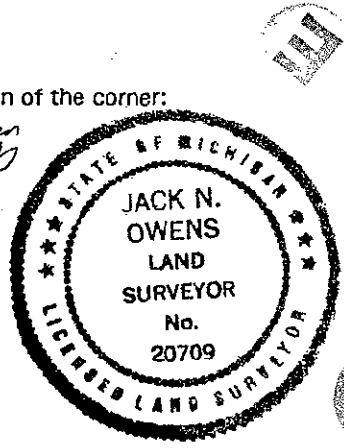
B. Description of corner evidence found and/or method applied in restoring or reestablishing corner:

1993 Gen. Co. Remon. Program	I conclude the corner position doesn't seem to have changed since 1882 and distances are nearly identical to the 1882 and 1991-1930 measurements. It shows the pattern of perpetuation by the Co. Sur. & GCRC. I accept the 1 1/4" iron rod in the mon. box as a faithful and careful perpetuation of the position of the original corner.
Recovered 1 1/4" iron rod in mon. box & 4 accessories (22" Bitternut Hickory to SW from 1978; rd. sign post to NW from 1987; 20' Ash to NW from 1987; R/W marker to NE from 1987)	
Dist. to J-3 = 2654.42' [40.218 chs] EDM (cf = 2655.85' [40.240 chs] in 1930, 2651.2' [40.17 chs] in 1822 GLO)	
Dist to L-3 = 2680.00' [40.606 chs] EDM (cf = 2681.15' [40.623 chs] in 1921, 2677.6' [40.57 chs] in 1822 GLO)	
Angle to North = 183 deg 06'43" (cf = 183 deg 03' which is sum of two angles measured in 1921 & 1930.	

Ratified by Gen. Co. Peer Group Dec. 21, 1993

C. Description of monument for corner and accessories established to perpetuate locating the position of the corner:

Accessories: S25W, 107.56' fnd nail/flag NW fc. 22" Bitternut & Hickory & 107.61' set spk/ GCRemon tag NW fc. (1978 acc. tree) N45W, 55.04' SE cor. rd. sign post (1987 acc.) N85W, 169.08' fnd nail/tag #11192 S. fc. 20" Ash (1987 acc.) N50E, 58.54' top conc. R/W marker (1987 acc.)	I set the standard Bernsten monument SSOA-5-BR-30 (3 1/4" Berntsen d. brass cap stamped "Genesee County Remonumentation Corner" 20709, 1993" with 20" x 2 3/8" O.D. stainless steel tube) over rod in mon. box.
--	---



1067

Signed by Jack N. Owens Date 12-29-93

Surveyor's Michigan License No. 20709

58

