

JAY 31 2000

DEED LIBER 2561 PAGE 78

SECTION

1994 REMONUMENTATION PROGRAM LAND CORNER RECORDATION CERTIFICATE

Filing Requirement of Act 74, Mich. P.A. 1970

For corners in Forest Twp.

| | | |
|------------------------------------|-------------|---------------|
| GENESEEE (County) | Located In: | Corner Code # |
| 1. Public Land Survey | T 09N R 08E | M-12 |
| | T R | |
| | T R | |
| | T R | |
| 2. Property Controlling in Section | S T R | |
| | S T R | |
| 3. Miscellaneous Property in Sec. | S T R | |
| | S T R | |

RECORDED
REGISTER OF DEEDS
Dec 28 3 32 PM '94
GENESEEE COUNTY
REGISTER OF DEEDS
Register of Deeds Stamp & File Number

4. Lot No. _____, Recorded Plat _____
 5. Private Claims _____

| A | B | C | D | E | F | G | H | I | J | K | L | M |
|----|----|----|----|----|----|----|---|---|---|---|---|---|
| 2 | 6 | 5 | 4 | 3 | 2 | 1 | | | | | | |
| 3 | | | | | | | | | | | | |
| 4 | 7 | 8 | 9 | 10 | 11 | 12 | | | | | | |
| 5 | | | | | | | | | | | | |
| 6 | 18 | 17 | 16 | 15 | 14 | 13 | | | | | | |
| 7 | | | | | | | | | | | | |
| 8 | 19 | 20 | 21 | 22 | 23 | 24 | | | | | | |
| 9 | | | | | | | | | | | | |
| 10 | 30 | 29 | 28 | 27 | 26 | 25 | | | | | | |
| 11 | | | | | | | | | | | | |
| 12 | 31 | 32 | 33 | 34 | 35 | 36 | | | | | | |
| 13 | | | | | | | | | | | | |

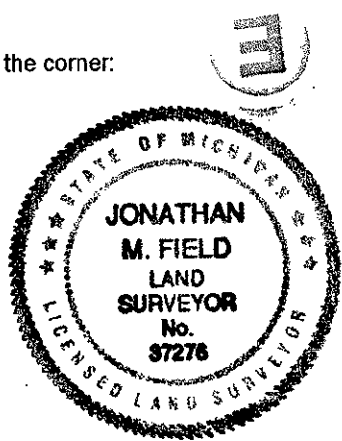
I, JONATHAN M. FIELD, in a field survey on SEPTEMBER 29 19 94 do hereby certify that under requirements of P.A. 74, Michigan P.A. of 1970, the corner points mentioned in lines 1 and 2 above were in conformance with regulations and rules therefore as required in the current manual of survey instructions of the United States Department of the Interior, Bureau of Land Management or by a decree of a Court of Law and/or that the corner points mentioned in lines 3, 4 and 5 above were in conformance with the rules of the Michigan Board of Land Surveyors or by a Decree of a Court of Law, established, re-established, monumented, re-monumented, recovered, found as expressed below:

NOTE: Not more than 4 corners, all in the same town and range, may be recorded on this certificate.

- A. Description of original monument and accessories and/or subsequent restoration:
 1821 GLO; WAMPLER, D.S.; ELM 14" AT 1/4 SEC. COR.; NO WITS GIVEN
 1884 BEDEN, C.S.; STONE; NO WITS GIVEN
 ??? GENESEEE CO. RD. COMM.; CORNER WITNESS BOOK; STONE & BRICK; SW 111.3' 18" ELM STUMP, W 23.0' 12" MAPLE, NW 46.2' 24" ELM
 1972 HENDERSON-BATES; ELRICH, P.S.#18986; LAPEER CO. SURVEY L.1, PG.331; FND 1" IRON PIPE; N10E 116.2 T.POLE, S35W 47.72' 6" POPLAR, S75W 39.9' 6" HICKORY
 1973 MITCHELL, P.S.#6936; L.C.R.C. L.1849, PGS. 326-327; SET TAG (METHOD NOT GIVEN); S45W 46.9' 6" POPLAR, S80W 39.6' 6" MAPLE, WEST 46.3' 36" ELM
 1973 HENDERSON-BATES; HENDERSON, P.S.#16043; LAPEER CO. SURVEY L.2, PG.79; OBJECT NOT STATED; WITS SAME AS 1972 SURVEY, ALSO ADDED WEST 46.46' 36" ELM
 1976 AM. CIVIL ENG.; PIOTROWSKI, P.S.#9685; SURVEY L.1939, PG.23; FND 1" IRON PIPE; SAME WITS AS 1973 L.C.R.C. ABOVE
- B. Description of corner evidence found and/or method applied in restoring or reestablishing corner:
 1994 ROWE ENG. - FIELD, P.S.#37276; FND 3/4" PIPE 6' E. OF C/L GRAVEL ROAD N-S & ON OLD FENCE LINE (EXTENDED) TO W. ALSO RECOVERED 3 PREVIOUS WITNESSES INDICATING THAT FND PIPE IS IN SAME POSITION AS 1972 HENDERSON-BATES SURVEY ABOVE

ACCEPTED 3/4" PIPE AS A CAREFUL AND FAITHFUL PERPETUATION OF THE ORIGINAL CORNER POSITION
 RATIFIED BY GEN. CO. PEER GROUP NOV. 9, 1994

- C. Description of monument for corner and accessories established to perpetuate locating the position of the corner:
 M-12 SET STANDARD GENESEEE CO. MONUMENT OVER 3/4" PIPE
 N10°E, 116.13' FND NAIL W/DISK IN SW FACE T.POLE
 WEST, 46.64' FND NAIL W/DISK IN E. FACE 38" STUMP
 S75°W, 40.00' SET NAIL W/REMON TAG IN NW FACE 8" HICKORY
 S35°W, 47.90' SET NAIL W/REMON TAG IN 12" POPLAR
 S65°E, 25.41' SET NAIL W/REMON TAG IN SW FACE TWIN 4" ASH



Signed by Jonathan M. Field Date 12-8-94
 Surveyor's Michigan License No. 37276

Ratified by Peer Group in accordance with P.A. 345, 1990
 Co. Rep. Carl Carlson
 Date Nov 9, 1994
 APPROVED BY MICHIGAN STATE BOARD OF LAND SURVEYORS, JAN. 28, 1971
 REVISED MAY 14, 1975
 REVISED JAN. 1983
 ADAPTED FOR WORD PROCESSING MARCH, 1993

73976
 69

\$ 9.00
 filed + rec