

AUG 23 2000

SECTION

LAND CORNER RECORDATION CERTIFICATE
Filing Requirement of Act 74, Mich. P.A. 1970
Gladwin County Remonumentation

LIBER 001 PAGE 297

For Corners in
GLADWIN

(County)

Located In:

Corner Code#:

- 1. Public Land Survey T. 17N R. 2W A-7
2. Public Controlling in Section S. T. R.
3. Miscellaneous Property in Section S. T. R.
4. Lot No. Recorded Plat
5. Private Claims

STATE OF MICHIGAN
GLADWIN COUNTY
FILED-REMONUMENTATION

10 AUG 2000 11:18:13 AM

BONNIE K. HOUSE
REGISTER OF DEEDS

Register of Deeds Stamp & File Number

I, Mark R. Robison, in a field survey on March 2000, do hereby certify that under requirements of P.A. 74, Michigan P.A. of 1970, the corner points mentioned in lines 1 and 2 above were in conformance with regulations and rules therefore as required in the current manual of survey instructions of the United States Department of the Interior, Bureau of Land Management or by a decree of a Court of Law and/or that the corner points mentioned in lines 3, 4 and 5 above were in conformance with the rules of the Michigan Board of Land Surveyors or by a Decree of a Court of Law, established, re-established, monumented, re-monumented, recovered, found as expressed below.

Grid table with columns A-M and rows 1-13. Row 2: 6, 5, 4, 3, 2, 1. Row 4: 7, 8, 9, 10, 11, 12. Row 6: 18, 17, 16, 15, 14, 13. Row 8: 19, 20, 21, 22, 23, 24. Row 10: 30, 29, 28, 27, 26, 25. Row 12: 31, 32, 33, 34, 35, 36.

NOTE: Not more than 2 corners, all in the same town and range, may be recorded on this certificate.

A. Description of original monument and accessories and/or subsequent restoration:

1831 R. Clark
Set Post Cor Sect's 13 & 24 in swamp
Wit-(1)Spruce 8 S63W 21
(2)B. Ash 10 S73W 37

1994 Lapham--survey
Set C.I., from previous survey
Wit-(3)S50°E, 71.07', - N&T Fence Post
(4)N55°W, 55.70', - 8" Maple
(5)S30°W, 64.75' - 14" Maple
(6)S05°E, 35.05' - 8" Elm

1996 Lapham--LCRC#177-96
Set Clare County Remon
Wit-(7)N44W 55.64 N&T in 7" Maple
(8)S03E 35.00 N&T in 10" Elm
(9)N75E 165.60 N&T in P.P.
(10)S66W 72.42 N&T in 20" Maple

1979 Lapham--working drawing
Wit-none

1994 Lapham--survey
Wit-same as (3), (4), (5) &(6)

2000 Lapham--survey
Found Clare Remon
Wit-same as (7), (8), (9)&(10)

B. Description of corner evidence found and/or method applied in restoring or re-establishing corner:

Found Clare County Remon in centerline of road opposite fences North-South. Corner agrees with witnesses as recorded in Clare County Records LCRC#177-96. Accepted Clare County Remon as corner of record.

See dossier for detailed report on corner A-7.

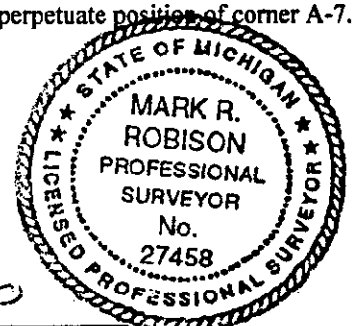
APPROVED LAND CORNER
P.A. 345 of 1990
Gladwin County

Co. Rep. [Signature]
Date 8-2-00

C. Description of monument for corner and accessories established to perpetuate locating the position of the corner:

Found 5/8" x 36" rered with 3" Clare County Monument Cap. Accepted as best available evidence to perpetuate position of corner A-7.

Witnesses:
N44°W 55.64', nail & tag, 7" Maple
S03°E 35.00', nail & tag, 10" Elm
N75°E 165.60', nail & tag, P.P.
S66°W 72.42', nail & tag, 20" Maple



Signed by [Signature]
Surveyor's Michigan License No. 27458

Date 8-9-00