

LAND CORNER RECORDATION CERTIFICATE

Filing Requirement of Act 74, Mich. PA 1970

For Corners In: Gladwin (County)	Located In	Corner Code #	
1. Public Land Survey	T _____ R _____		
	T _____ R _____		
2. Property Controlling in Section	S <u>3</u> T <u>18N</u> R <u>1E</u>	<u>16</u>	
	S <u>9</u> T <u>18N</u> R <u>1E</u>	<u>2</u>	
3. Miscellaneous Property in Section	S _____ T _____ R _____		
	S _____ T _____ R _____		

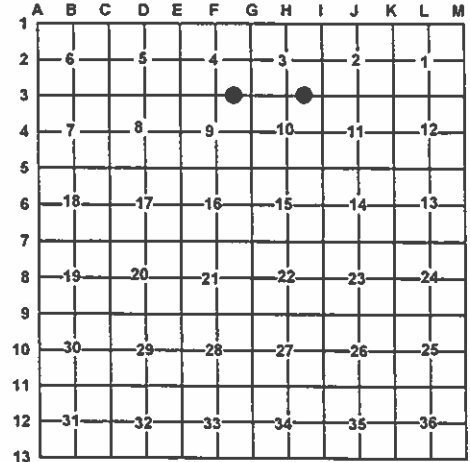
Register of Deeds Stamp & File Number

4. Lot No: _____ Recorded Plat: _____

5. Private Claims: _____

I, Craig W. McVean, in a field survey on Aug. 2, 2010 do hereby state that under requirements of PA 74, Michigan PA of 1970, the corner points mentioned in lines 1 and 2 above were in conformance with regulations and rules therefore as required in the current manual of survey instructions of the United States Department of the Interior, Bureau of Land Management or by a decree of a Court of Law and/or that the corner points mentioned in lines 3, 4 and 5 above were in conformance with the rules of the Michigan Board of Land Surveyors or by a Decree of a Court of Law; established, re-established, monumented, recovered, found as expressed below:

NOTE: Not more than 2 corners, all in the same town and range, may be recorded on this certificate.



A. Description of original monument and accessories and/or subsequent restoration:

16 – 1987 – Record Survey L. 2, p. 343 – J. Meyers – Set ½" x 18" capped iron (RLS)

2 – 1955 – "Heil & Rivers Subdivision No. 1
2" – L. 4 of plats, P. 20 – A. V. Courtright – Permanent metal monument consisting of steel bars at least ½" in diameter and 48" long encased in a concrete bar 4" square x 48" long.
- 1961 – "Supervisors Plat of Riverside Terrace Subdivision" – L. 8 of plats, p. 20, Alva V. Courtright. Shows corner.

B. Description of corner evidence found and/or method applied in restoring or re-establishing corner:

16 – E 1/16 Corner common to Sec. 3 & 10, T18N, R1E – Set 2" Alum. Cap on 5/8" x 34" long iron rebar per Standard BLM procedure.

2 – E 1/16 Corner common to Section 4 & 9, T18N, R1E – Fd. 5" Concrete Monument with 7/8" iron bar in grassy mowed area – Buried 1'. Fits plat monumentation E & W. Concrete monument accepted as the best available evidence of the position of the corner.

- Reference Pt. – Fd. ½" CIR #9433 with coffee can with concrete S11°54'E 3.99' of corner #16. Single strand wire W & S. Felt the ½" CIR was too far out of position to be acceptable. ½" CIR not utilized as #16 in this survey.

C. Description of monument for corner and accessories established to perpetuate locating the position of the corner:

16 – Stamped 2" Alum. Cap on 5/8" x 34" long iron rebar. NW 1' to set Cedar post with loc. tag
N75°W 42.50' to set N & T in S. side 7" Oak
N6°W 24.42' to set N & T in W. side Tw. 2" & 4" R. Maple
S47°E 28.06' to set N & T in N. side 3" Tw. R. Maple
S11°54'E 3.99' to ½" CIR #9433 in coffee can with conc. – Reference Pt.

2 – 5" Round Concrete Monument with 7/8" iron bar – Down 1' S73°W 65.31' to set N & T in N. side 38" W. Pine
N0°48'35"W 49.96' (50'-P) to Fd. 5" Conc. Mon.
N89°08'30"E 150.00 (P & M) to Fd. 5" Conc. Mon.
S1°49'19"E 117.17' to Fd. ½" CIR #9433

Signed by: Craig W. McVean
Surveyor's Michigan License No.: 39088

Date: 11/29/2012

